

2001年(月)日



PARTS LIST

RM82B
RM85B

Fig ,1	Frame & Control	1
Fig ,2	Transmission	5
Fig ,3	Front Axle & Wheel	8
Fig ,4	Electric Equipment	13
Fig ,5	Engine Outside Equipment	13
Fig ,6	Rotary & Cover	16

FIG. 1 Frame & Control

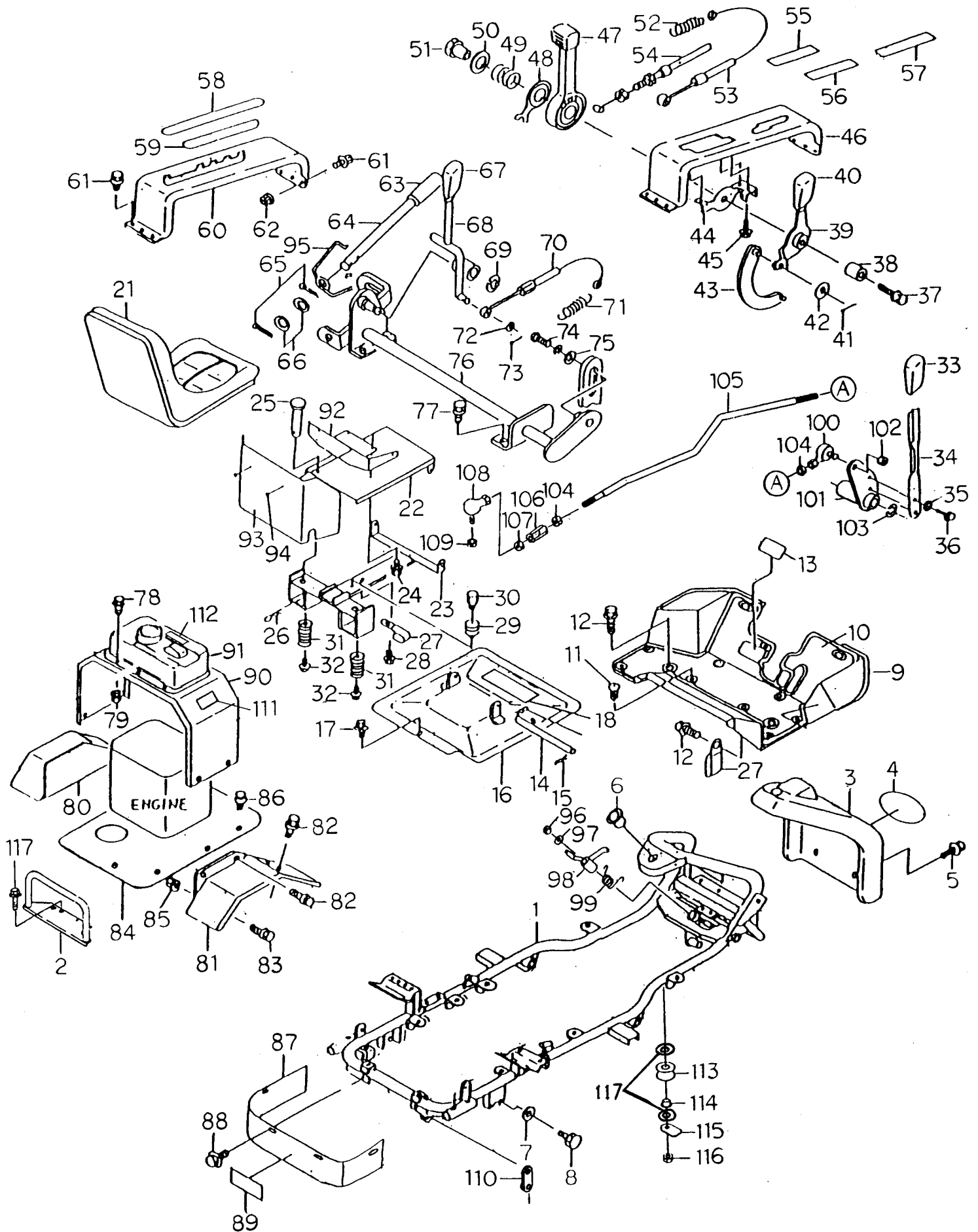


FIG. 1 Frame & Control

Ref.	Part No.	Part Name	Qty.		Remarks
			RM 82B	RM 85B	
1	80-1484-A31-00	Main Frame CMP	1	1	
2	80-1483-346-00	Engine Guard	1	1	
3	80-1484-213-00	Front Cover	1	1	
4	80-1484-904-00	Main Plate (RABBIT)	1	1	
5	89-1136-080202	Hexagonal Bolt (PW.SW) M8*20	3	3	
6	89-3511-022150	Collar DU Bush 22.15.33F	1	1	
7	89-1711-100002	Flat Washer 10	4	4	
8	89-1135-100202	Hexagonal Bolt (SW) M10*20	4	4	
9	80-1484-365-00	Step	1	1	
10	80-1488-366-00	Step Rubber	1	1	
11	83-1484-369-00	Clip (5347)	9	9	
12	89-1136-080162	Hexagonal Bolt (PW.SW) M8*16	5	5	
13	80-1488-921-00	Label, Pedal Stopper	1	1	*1
14	80-1481-487-00	Support Pin	1	1	
15	89-2131-120002	Snap Pin 12	2	2	
16	80-1484-491-00	Seat Bracket	1	1	
17	89-1136-080202	Hexagonal Bolt (PW.SW) M8*20	3	3	
18	80-1484-A47-00	Label, Attention	1	1	
21	80-1481-944-00	Seat GTP-4(black)	1	1	
22	80-1484-485-00	Seat Receiver (Upper)	1	1	
23	80-1484-486-10	Seat Receiver (Lower)	1	1	
24	89-1136-080162	Hexagonal Bolt (PW.SW) M8*16	4	4	
25	89-2181-080602	Flat Head Pin 8X60	1	1	
26	89-2131-080002	Snap Pin 8	1	1	
27	80-1792-988-00	Harness Clip 8	2	2	
28	89-1136-080162	Hexagonal Bolt (PW.SW) M8*16	1	1	
29	80-1484-495-00	Seat Switch Spring	1	1	
30	80-1484-489-10	Bolt For Holding Spring	1	1	
31	80-1484-494-10	Seat Spring ϕ 33	2	2	*5
32	89-1136-080202	Hexagonal Bolt (PW.SW) M8*20	2	2	
33	80-1515-262-00	Arm Grip	1	1	
	83-1417-435-00	Arm Grip	1	1	*5
34	80-1484-263-10	Change Lever	1	1	*5
35	89-1750-060002	Spring Washer 6	2	2	
36	89-1113-060142	Hexagonal Bolt (8T) M6*14	2	2	
37	89-1136-080302	Hexagonal Bolt (PW.SW) M8*30	1	1	
38	80-1020-270-00	Inner Collar	1	1	
39	80-1484-273-10	Differential Lock Lever	1	1	*4
40	80-1515-262-00	Arm Grip	1	1	
41	89-2120-200152	Split Pin 2X15	1	1	
42	89-1711-060002	Flat Washer 6	1	1	
43	80-1481-287-00	Differential Lock Wire Joint	1	1	
44	80-1484-266-10	Control Bracket	1	1	
45	89-1137-060152	Hexagonal Bolt (PW) M6*15	3	3	
46	80-1487-268-00	Change Guide	1	1	
47	80-1020-265-00	Throttle Lever	1	1	
48	80-1020-264-00	Control Washer	1	1	

FIG. 1 Frame & Control

Ref.	Part No.	Part Name	Qty.		Remarks
			RM 82B	RM 85B	
49	80-1020-263-00	Control Shaft Spring	1	1	
50	89-1711-120003	Flat Washer 12	1	1	
51	80-1020-262-00	Control Lever Shaft	1	1	
52	80-1425-551-00	Differential Lock Spring	1	1	
53	83-1484-937-00	Differential Lock Wire	1	1	
54	83-1484-952-00	Throttle Wire	1	1	
55	80-1484-A55-00	Label, Throttle	1	1	
56	80-1484-A43-00	Label, Differential Lock	1	1	
57	80-1484-A42-00	Label, Change	1	1	
	80-1484-A42-10	Label, Change	1	1	*5
58	80-1484-A45-00	Label, Cutting Height Adjustment	1	1	
59	80-1484-A44-00	Label, Blade	1	1	
60	80-1484-281-00	Cutting Height Guide	1	1	
	0207-10510	Cutting Height Guide	1	1	*9
61	89-1136-080202	Hexagonal Bolt (PW.SW) M8*20	4	4	
62	89-1631-080042	Flange Mini Hexagonal Nut M8	2	2	
63	83-1515-411-00	Handle Grip 15	1	1	
64	80-1482-272-00	Cutting Height Adjustment Lever	1	1	
65	89-2120-300252	Split Pin 3X25	2	2	
66	83-1630-342-00	Washer 16X26X2.3	2	2	
67	80-1484-262-00	Arm Grip (Red)	1	1	
68	80-1488-285-00	Knife Clutch Lever	1	1	
69	89-2521-000120	E-Type Ring 12	1	1	
70	83-1481-947-00	Blade Clutch Wire	1	1	
71	0207-78400	Spring For Knife Tension	1	1	*9
72	89-1711-060002	Flat Washer 6	1	1	
73	89-2120-200152	Split Pin 2X15	1	1	
74	89-1135-080252	Hexagonal Bolt (SW) M8*25	2	2	
75	83-1020-312-00	Washer 8X30X3.2	2	2	
76	80-1488-742-00	Shaft For Adjusting Up/Down CMP	1	1	
77	89-1135-100202	Hexagonal Bolt (SW) M10*20	4	4	
78	89-1137-060152	Hexagonal Bolt (PW) M6*15	6	6	
79	83-1575-189-00	Flange Cap Nut M6	6	6	
80	80-1484-461-00	Fender (L)	1	1	
81	80-1484-462-00	Fender (R)	1	1	
82	89-1136-080162	Hexagonal Bolt (PW.SW) M8*16	2	2	
83	89-1136-080202	Hexagonal Bolt (PW.SW) M8*20	2	2	
84	80-1484-311-10	Engine Base	1	1	
85	89-1631-080042	Flange Mini Hexagonal Nut M8	2	2	
86	89-1136-080202	Hexagonal Bolt (PW.SW) M8*20	7	7	
87	80-1484-503-00	Rear Belt Cover	1	1	
88	89-1136-080162	Hexagonal Bolt (PW.SW) M8*16	4	4	
90	80-1483-473-00	Tank BK (With Rubber)	1	1	
91	88-51001-2258-9H	Fuel Tank CMP (Kawasaki)	1	1	
	88-49019-2107	Filter (Kawasaki)	1	1	
	88-52005-2100	Gauge (Kawasaki)	1	1	
	88-51048-2052	Cap Assy (Kawasaki)	1	1	

FIG. 1 Frame & Control

Ref.	Part No.	Part Name	Qty.		Remarks
			RM 82B	RM 85B	
	88-221C0512	Screw 5*12 (Kawasaki)	2	2	
93-94	80-1487-480-00	Wind Shield Assy	1	1	
92	80-1487-484-00	Plate For Attaching Wind Shield	1	1	
93	80-1487-483-00	Wind Shield	1	1	
94	83-1484-369-00	Clip (5347)	4	4	
95	80-1487-274-00	Cutting Height Lever Spring	1	1	
96	89-1551-100002	Hexagonal U Nut M10	1	1	
97	89-1711-100002	Flat Washer 10	1	1	
98	80-1484-355-00	Brake Stopper	1	1	
99	80-1484-356-00	Brake Stopper Return Spring	1	1	
100	80-1481-962-00	Link Ball BL8D(L)	1	1	
101	80-1484-264-20	Change Lever Boss	1	1	*5
102	89-1541-080002	Hexagonal Nut(SW) M8	1	1	
103	89-2521-000150	E-Type Ring 15	1	1	
104	83-1481-178-00	Nut(L) M8	1	1	
105	80-1484-A22-00	Shift Rod	1	1	
106	80-1481-269-00	Turn Buckle	1	1	
107	89-1613-080042	Mini Hexagonal Nut (3 Sorts) M8	1	1	
108	80-1481-963-00	Link Ball BL8D(L)	1	1	
109	89-1541-080002	Hexagonal Nut(SW) M8	1	1	
110	80-1484-A21-00	Spacer for Transmission	1	1	
112	83-1415-909-00	Label, Caution around Engine	1	1	*1
113	80-1484-354-00	Brake Rod Roller	1	1	
	80-1484-354-10	Brake Rod Roller	1	1	*3
114	89-3511-010150	Collar DU Bush 10.15.18F	1	1	
	89-3510-012200	DU Bush MB1220 DU	1	1	*3
115	80-1484-364-00	Plate for Brake Rod	1	1	
116	89-1541-080002	Hexagonal Nut(SW) M8	1	1	
117	83-1020-355-00	Thrust Washer 12*24*1.0	2	2	*3
M E M O					
*1)Serial Number RM82B : After XF96M00060 RM85B : After XG96M00001					
*2)Serial Number RM82B : Before XF96M00060 RM85B : Before XG96M00001					
*3)Serial Number RM82B : After XF98C00001 RM85B : After XG97A00025					
*4)Serial Number RM82B : After XF98C00001 RM85B : After XG98C00001					
*5)Serial Number RM82B : After XF98L00038 RM85B : After XG98L00125					
*6)Serial Number RM85B : After XG99C00001					
*7)Serial Number RM82B : After XF99M00001 RM85B : After XG99F00039					
*8)Serial Number RM82B : After XF00A00001 RM85B : After XG00A00001					
*9)Serial Number RM85B : After XG00H00189					
Ref 34) 80-1484-263-00 Change Lever is equivalent to 80-1484-263-10 & 83-1417-435-00.					
Ref 101) 80-1484-178-00 Change Lever Boss is equivalent to 80-1484-264-20 & 80-1484-A42-10					

FIG. 2 Transmission

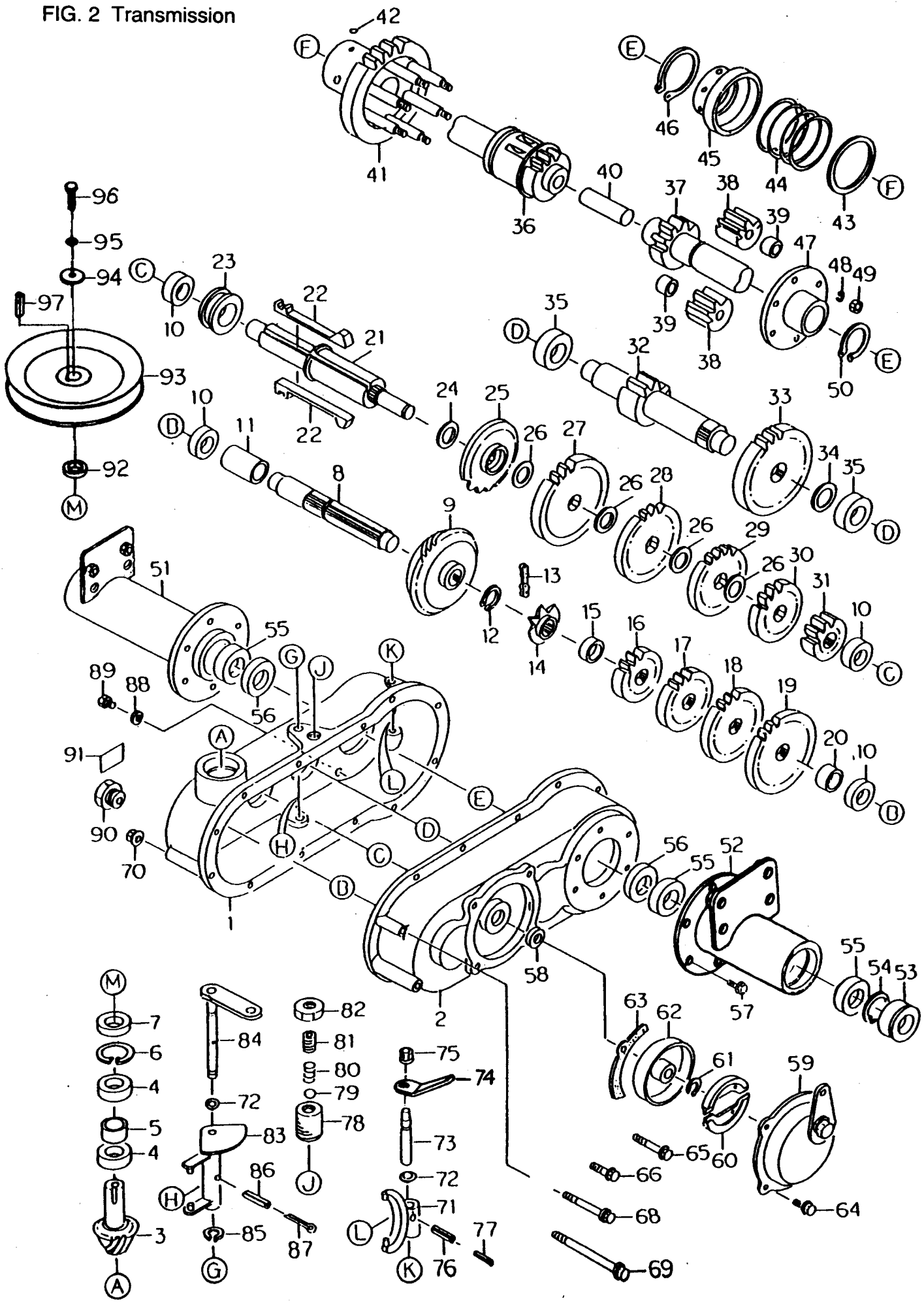


FIG. 2 Transmission

Ref.	Part No.	Part Name	Qty.		Remarks
			RM 82B	RM 85B	
1-91	80-1484-A10-00	Transmission Assy	1	1	
1	80-1482-101-00	Transmission Case (Left)	1	1	
2	80-1482-103-00	Transmission Case (Right)	1	1	
3	80-1481-118-00	A Axle 15T	1	1	
4	89-3115-062024	Bearing 6202 2RS	2	2	
5	80-1482-119-00	A Axle Collar	1	1	
6	89-2512-000350	Snap Ring 35	1	1	
7	89-5111-153507	Oil Seal AD 15.35.7.	1	1	
8	80-1482-122-00	B Axle	1	1	
9	80-1482-127-00	Bevel Gear 45T	1	1	
10	89-3111-062024	Ball Bearing (6202)	4	4	
11	80-1482-131-00	Collar 18x22x34	1	1	
12	89-2511-000170	Snap Ring 17	1	1	
13	89-6513-420024	Chain #420-24L	1	1	
14	80-1482-128-00	B Axle Sprocket 8T	1	1	
15	80-1482-129-00	Collar 18x22x7	1	1	
16	80-1481-123-00	B Axle Gear 18T	1	1	
17	80-1481-124-00	B Axle Gear 25T	1	1	
18	80-1481-125-00	B Axle Gear 33T	1	1	
19	80-1481-126-00	B Axle Gear 40T	1	1	
20	80-1482-130-00	Collar 18x22x11	1	1	
21	80-1482-132-10	C Axle	1	1	*4
22	80-1482-113-00	Shift Key	2	2	
23	80-1481-111-00	Shift Key Holder	1	1	
24	80-1481-139-00	C Axle Washer 29x40x1.0	1	1	
25	80-1482-138-00	Sprocket 18T	1	1	
26	80-1482-139-00	C Axle Washer 29x44x1.0	4	4	
27	80-1482-137-00	C Axle Gear 48T	1	1	
28	80-1482-136-00	C Axle Gear 41T	1	1	
29	80-1482-135-00	C Axle Gear 33T	1	1	
30	80-1482-134-00	C Axle Gear 26T	1	1	
31	80-1482-133-00	C Axle Gear 12T	1	1	
32	80-1482-142-00	D Axle 9T	1	1	
33	80-1482-144-00	D Axle Gear 36T	1	1	
34	83-1830-368-00	Thrust Washer 18X26X1.0	1	1	
35	89-3111-062034	Bearing 6203	2	2	
36	80-1482-146-00	Axle (Left) CMP	1	1	
37	80-1482-147-00	Axle (Right) CMP	1	1	
38	80-1481-152-00	Differential Lock Gear 11T	4	4	
39	80-1481-155-00	Differential Lock Gear Axle Collar	4	4	
40	80-1415-150-00	Axle Pin	1	1	
41	80-1481-148-20	Axle Gear CMP	1	1	*5
42	89-3410-075000	Steel Ball 7.5	3	3	
43	83-1830-382-00	Thrust Washer	1	1	
44	80-1751-162-00	Side Clutch Spring	1	1	
45	80-1425-143-00	Differential Lock Cone	1	1	
46	89-2511-000400	Snap Ring 40	1	1	
47	80-1481-151-00	Differential Plate	1	1	with bush 28.30
48	89-1750-100002	Spring Washer 10	6	6	

FIG. 2 Transmission

Ref.	Part No.	Part Name	Qty.		Remarks
			RM 82B	RM 85B	
49	89-1513-100042	Hexagonal Nut(3 Sorts) M10	6	6	
50	89-2511-000280	Snap Ring 28	1	1	
51	80-1484-A11-00	Axle Case(L)	1	1	
52	80-1484-A12-00	Axle Case (R)	1	1	
53	83-1415-663-00	Oil Seal AP30.47.7	2	2	
54	89-2512-000470	Snap Ring 47	2	2	
55	89-3115-060054	Ball Bearing 6005, 2RS	4	4	
56	89-5121-284708	Oil Seal UE 28.47.8.	2	2	
57	83-1482-143-00	Hexagonal Tap Tight M8x25	12	12	
58	89-5121-153007	Oil Seal UE 15.30.7	1	1	
59-63	80-1482-280-00	Brake Assy	1	1	ref.59-63
59	80-1030-271-00	Brake Cap Assy	1	1	
60	80-1030-284-00	Brake Shoe(PA-7)	2	2	
61	89-2511-000150	Snap Ring 15	1	1	
62	80-1030-282-00	Brake Durm(PA-7)	1	1	
63	80-1030-288-00	Brake Cover PK(PA-7)	1	1	
64	83-1020-148-00	Hexagonal Tap Tight M6x14	4	4	
65	89-1251-080502	Flange Hexagonal Bolt M8*50	8	8	
66	89-1251-080402	Flange Hexagonal Bolt M8*40	1	1	
68	89-1251-080702	Flange Hexagonal Bolt M8*70	1	1	
69	89-1251-081402	Flange Hexagonal Bolt M8*140	2	2	
70	89-1555-080002	U Tipe Nut, Flange M8	12	12	
71	80-1830-113-00	Differential Lock Fork	1	1	
72	89-5221-009000	O Ring P9	2	2	
73	80-1481-116-00	Differential Lock Fork Shaft	1	1	
74	80-1484-A13-00	Differential Lock Arm	1	1	
75	89-1541-080002	Hexagonal Nut(SW) M8	1	1	
76	89-2111-050022	Spring Pin 5X22	1	1	
77	89-2111-030022	Spring Pin 3X22	1	1	
78	80-1482-162-00	Notch Adjusting Screw	1	1	
79	89-3410-080000	Steel Ball 8	1	1	
80	80-1481-160-00	Pushing Spring 1.0	1	1	
81	89-1172-100161	Screw M10x16	1	1	
82	89-1514-160042	Hexagonal Nut (3 Sorts,Slender) M16	1	1	
83	80-1482-108-00	Shift Fork	1	1	
84	80-1482-110-00	Shift Fork Shaft	1	1	
85	89-2511-000120	Snap Ring 12	1	1	
86	89-2111-050020	Spring Pin 5X20	1	1	
87	89-2120-300252	Split Pin 3x25	1	1	
88	89-5230-100000	Seal Washer 10	1	1	
89	89-1111-100122	Hexagonal Bolt M10*12	1	1	
90	83-1032-689-00	Oil Gauge M28	1	1	
91	83-1712-923-00	Label, Oil Quantity 1.6	1	1	
92	80-1484-A14-00	Transmission Pulley Collar	1	1	
93	80-1482-521-00	Transmission Pulley	1	1	
94	83-1482-311-00	Washer 6.5x22x3.2	1	1	
95	89-1750-060002	Spring Washer 6	1	1	
96	89-1113-060202	Hexagonal Bolt (8T) M6*20	1	1	
97	89-2151-050250	Key 5X25	1	1	

FIG. 3 Front Axle & Wheel

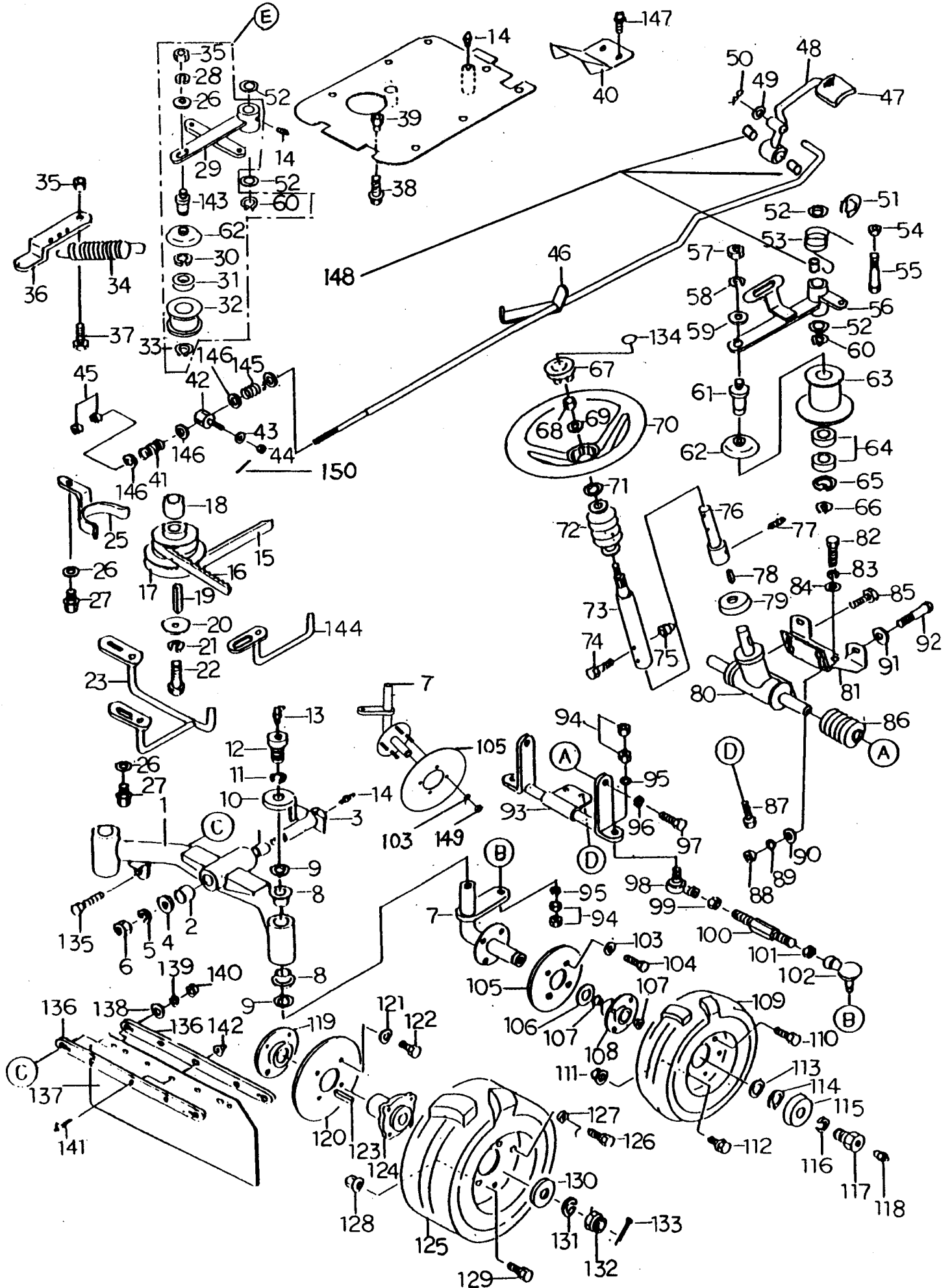


FIG. 3 Front Axle & Wheel

Ref.	Part No.	Part Name	Qty.		Remarks
			RM 82B	RM 85B	
1	80-1484-721-30	Front Axle	1	1	*7
2	89-3510-025250	DU Bush 25.25	2	2	
	89-3510-025350	DU Bush 25.35	2	2	*7
3	0207-30700	Center Pin	1	1	*8
4	89-1711-120002	Washer 13X21	1	1	
5	89-1750-120002	Spring Washer 12	1	1	
6	89-1551-120002	U Nut M12	1	1	
7	80-1488-724-00	King Pin (Left) CMP	1	1	
	80-1488-724-10	King Pin (Left) CMP	1	1	
	80-1488-725-00	King Pin (Right) CMP	1	1	
	80-1488-725-10	King Pin (Right) CMP	1	1	
8	89-3511-020200	Collar Du Bush 20.20.31F	4	4	
9	83-1310-371-00	Thrust Washer 20X30X1.0	8	8	
10	84-1783-729-00	Dust Cover	2	2	
11	89-1750-140002	Spring Washer 14	2	2	
12	84-1783-791-00	Nipple Bolt M14	2	2	
13	83-1515-975-00	Grease Nipple C-Type M6	2	2	
14	83-1415-975-00	Grease Nipple M6	5	5	
15	89-6123-007502	V-belt (Cutting) SB-75W800	1	1	
16	89-6133-002900	Belt(drive) RCLB-29	1	1	
17	80-1482-514-00	Engine Pulley	1	1	
18	80-1481-512-00	Engine Collar 33	1	1	
19	83-1437-205-00	Key 1/4" x40	1	1	
20	83-1482-319-00	Washer 11x36x4.5	1	1	
21	89-1750-120002	Spring Washer 12	1	1	
22	83-1482-115-00	Hexagonal Bolt(8T) UNF7/16-20x45	1	1	
23	80-1485-518-00	Knife Belt Stopper (Engine)	1	1	
24	83-1020-363-00	Thrust Washer 16X24X1.0	2	2	
25	80-1482-517-00	Drive Belt Stopper	1	1	
26	89-1711-100002	Flat Washer 10	3	3	
27	89-1135-100202	Hexagonal Bolt (SW) M10*20	4	4	
E	80-1482-541-00	Driving Tension Arm Assy	1	1	
28	89-1750-100002	Spring Washer 10	1	1	
29	80-1484-543-10	Driving Tension Arm CMP	1	1	with bush 16.15
30	89-2512-000400	Snap Ring 40	1	1	
31	89-3117-062034	Bearing 6203 2RD	1	1	
32	83-1032-765-00	Tension Pulley	1	1	
33	89-2511-000170	Snap Ring 17	1	1	
34	80-1485-551-00	Driving Tension Spring	1	1	
35	89-1511-100042	Hexagonal Nut M10	1	1	
36	80-1485-544-00	Driving Tension Spring Arm	1	1	
37	89-1111-100252	Hexagonal Bolt M10*25	1	1	
38	89-1111-080402	Hexagonal Bolt M8*40	4	4	
39	89-1541-080002	Hexagonal Nut(SW) M8	4	4	
40	80-1482-316-00	Protection Guard	1	1	
41	80-1484-672-00	Spring 20	1	1	
42	80-1481-358-10	Brake Joint	1	1	*6
43	89-1711-060002	Flat Washer 6	1	1	

FIG. 3 Front Axle & Wheel

Ref.	Part No.	Part Name	Qty.		Remarks
			RM 82B	RM 85B	
44	89-1551-060002	Hexagonal U Nut M6	1	1	
44	83-1493-198-00	U Nut M6 (ROCK)	1	1	*5
45	89-1611-080042	Hexagonal Nut M8	1	1	*10
	83-1490-198-00	Hexagonal U Nut M8	1	1	*10
46	80-1484-A23-00	Brake Rod	1	1	
47	80-1781-943-00	Pedal Rubber	1	1	
48	80-1484-351-10	Brake Pedal (DU Bush 16.25)	1	1	*4
49	89-1711-120002	Flat Washer 12	1	1	
50	89-2131-120002	Snap Pin 12	1	1	
51	89-2521-000150	E-Type Ring 15	1	1	
52	83-1020-363-00	Thrust Washer 16X24X1.0	4	4	
53	80-1481-568-00	Knife Tension Return Spring ϕ 26.7	1	1	
53	80-1483-568-00	Knife Tension Return Spring ϕ 29	1	1	*4
54	89-1511-080042	Hexagonal Nut M8	1	1	
55	89-1113-080352	Hexagonal Bolt (8T) M8*35	1	1	
56-66	80-1483-545-00	Knife Tension Arm Assy	1	1	ref. 56-66
56	80-1483-547-30	Knife Tension Arm CMP ϕ 18	1	1	*4
57	89-1511-100042	Hexagonal Nut M10	1	1	
58	89-1750-100002	Spring Washer 10	1	1	
59	89-1711-100002	Flat Washer 10	1	1	
60	89-2511-000160	Snap Ring 16	1	1	
61	83-1482-763-00	Tension Pulley Shaft	2	2	
62	80-1482-549-00	Rubber Cover 58	1	1	
63	83-1483-782-00	Knife Tension Pulley	2	2	
64	89-3114-062024	Bearing 6202 ZZ	1	1	
65	89-2512-000350	Snap Ring 35	1	1	
66	89-2511-000150	Snap Ring 15	1	1	
67	80-1484-222-00	Steering Cap	1	1	
68	89-1551-100002	U Nut M10	1	1	
69	89-1711-100002	Flat Washer 10	1	1	
70	80-1484-221-00	Steering Wheel	1	1	
71	83-1020-363-00	Thrust Washer 16X24X1.0	1	1	
72	80-1484-325-00	Steering Shaft Cover	1	1	
73	80-1481-323-20	Steering Upper Shaft	1	1	
74	89-1113-060352	Hexagonal Bolt (8T) M6*35	1	1	
75	89-1553-060002	Cap Nut U Type M6	1	1	
76	80-1481-324-20	Steering Lower Shaft	1	1	*8
77	83-1493-149-00	Hexagonal Screw M8X10	1	1	*4
78	89-2150-050200	Key 5X20	1	1	
79	80-1016-461-00	Bearing Cover	1	1	
80	80-1484-962-00	Steering Gear Box Assy	1	1	
	80-1484-962-10	Steering Gear Box Assy	1	1	*1
81	80-1484-327-20	Steering BK	1	1	
82	89-1113-080202	Hexagonal Bolt (8T) M8*20	2	2	
83	89-1750-080002	Spring Washer 8	2	2	
84	89-1711-080002	Flat Washer 8	2	2	
85	89-1135-080162	Hexagonal Bolt (SW) M8*16	4	4	
86	80-1781-963-00	Steering Boots	2	2	

FIG. 3 Front Axle & Wheel

Ref.	Part No.	Part Name	Qty.		Remarks
			RM	RM	
			82B	85B	
87	83-1020-143-00	Hexagonal Tap Tight M8X18	2	2	
88	89-1511-080042	Hexagonal Nut M8	2	2	
89	89-1750-080002	Spring Washer 8	2	2	
90	89-1711-080002	Flat Washer 8	2	2	
91	83-1020-312-00	Washer 8X30X3.2	2	2	
92	89-1111-080702	Hexagonal Bolt M8*70	2	2	
93	80-1484-321-20	Rack Support	1	1	
94	89-1511-100042	Hexagonal Nut M10	8	8	
	83-1493-255-00	Lock Nut M10 (Small)	2	2	*1
95	89-1750-100002	Spring Washer 10	4	4	
96	89-1750-100002	Spring Washer 10	4	4	
97	89-1114-100252	Hexagonal Bolt (8T) M10*25	2	2	*2
	89-1124-100253	Flange Bolt (Slender) M10*25	2	2	*1
98	80-1791-962-00	Link Ball BL10BD	2	2	*2
	80-1493-962-00	Lod End LHSA 10DE21	2	2	*1
99	89-1511-100042	Hexagonal Nut M10	2	2	*2
	89-1612-100042	Mini Hexagonal Nut (Slender) M10	2	2	*1
100	80-1484-329-00	Tie Rod Adjuster	2	2	*2
	80-1484-329-10	Tie Rod Adjuster	2	2	*1
101	83-1210-178-00	Nut (Left) M10	2	2	*2
	83-1493-195-00	Nut (Left) M10 (Small)	2	2	*1
102	80-1791-963-00	Link Ball BL10BDL	2	2	*2
	80-1493-963-00	Lod End LHSA 10DLE21	2	2	*1
103	89-1711-080002	Flat Washer 8	8	8	
104	89-1111-080162	Hexagonal Bolt M8*16	8	8	
105	80-1482-425-00	Front Wheel Rubber Cover	2	2	
106	83-1310-371-00	Thrust Washer 20X30X1.0	2	2	
107	89-3511-020200	Collar DU Bush 20.20.31F	4	4	
108	80-1481-413-00	Front Wheel Boss	2	2	
109	80-1260-411-00	Front Tire Assy (Left) 3.50-7	1	1	
	80-1260-412-00	Front Tire Assy (Right) 3.50-7	1	1	
110	89-1132-100202	Hexagonal Bolt (SW) M10*20	8	8	
111	89-1541-080002	Hexagonal Nut(SW) M8	12	12	
112	89-1111-080202	Hexagonal Bolt M8*20	12	12	
113	83-1310-371-00	Thrust Washer 20X30X1.0	2	2	
114	89-2511-000200	Snap Ring (S20)	2	2	
115	84-1783-729-00	Dust Cover	2	2	
116	89-1750-140002	Spring Washer 14	2	2	
117	84-1783-791-00	Nipple Bolt M14	2	2	
118	83-1415-975-00	Grease Nipple M6	2	2	
119	80-1482-424-00	Axle Dust Cover	2	2	
120	80-1482-426-00	Rear Wheel Rubber Cover	2	2	
121	89-1711-080002	Flat Washer 8	8	8	
122	89-1111-080162	Hexagonal Bolt M8*16	8	8	
123	89-2150-070500	Key 7x50	2	2	
124	80-1481-414-10	Rear Wheel Boss	2	2	
125	80-1751-411-00	Tire Wheel Assy (Left) (16*700*8)	1	1	
	80-1751-412-00	Tire Wheel Assy (Right) (16*700*8)	1	1	

FIG. 3 Front Axle & Wheel

Ref.	Part No.	Part Name	Qty.		Remarks
			RM 82B	RM 85B	
126	89-1113-100252	Hexagonal Bolt (8T) M10*25	8	8	
127	89-1750-100002	Spring Washer 10	8	8	
128	89-1541-080002	Hexagonal Nut(SW) M8	12	12	
129	89-1111-080202	Hexagonal Bolt M8*20	12	12	
130	83-1630-335-00	Washer 16x40x4.5	2	2	
131	89-1750-160002	Spring Washer 16	2	2	
132	89-1658-160042	Low Fluted Nut (2 Sorts) M16	2	2	
133	89-2120-300252	Split Pin 3X25	2	2	
134	80-1484-914-00	Label, Handle	1	1	
135	89-1113-100352	Hexagonal Bolt (8T) M10*35	2	2	
133-139	80-1484-415-10	Front Guard Assy	1	1	
136	80-1484-416-20	Front Guard	2	2	
137	80-1484-417-20	Front Flapper	1	1	
138	89-1711-100002	Washer 10	2	2	
139	89-1750-100002	Spring Washer 10	2	2	
140	89-1511-100042	Hexagonal Nut M10	2	2	
141	89-1137-060202	Hexagonal Bolt (PW) M6*20	5	5	
142	83-1575-189-00	Flange Cap Nut M6	5	5	
143	83-1482-765-00	Tension Pulley Shaft	1	1	
144	80-1482-527-00	Drive Belt Holder	1	1	
145	Discontinued	Spring 45	1	1	
146	89-1714-080002	Flat Washer 8	2	2	*11
147	89-1136-080162	Hexagonal Bolt (PW.SW) M8*16	2	2	
148	89-3510-016250	DU Bush 16.25	4	4	*4
149	89-1611-080042	Mini Hexagonal Nut M8	8	8	*4
150	89-2120-200152	Split Pin 2X15	1	1	*6
<p>Ref 7) 80-1488-724-00 King Pin (Left) CMP is equivalent to 80-1488-724-10 & 89-1611-080042</p> <p>Ref 7) 80-1488-725-00 King Pin (Left) CMP is equivalent to 80-1488-725-10 & 89-1611-080042</p> <p>Product of after 2001 was changed , please see a last page.</p> <p>Ref 42) 80-1481-358-00 Brake Joint is equivalent to 80-1481-358-10 & 89-2120-200152</p> <p>*10) 89-1611-080042 and 83-1490-198-00 are one set.</p> <p>*11) 4 pieces are necessary for unit before February 1998</p>					

4-
3-
2-

FIG. 4 Electric Equipment

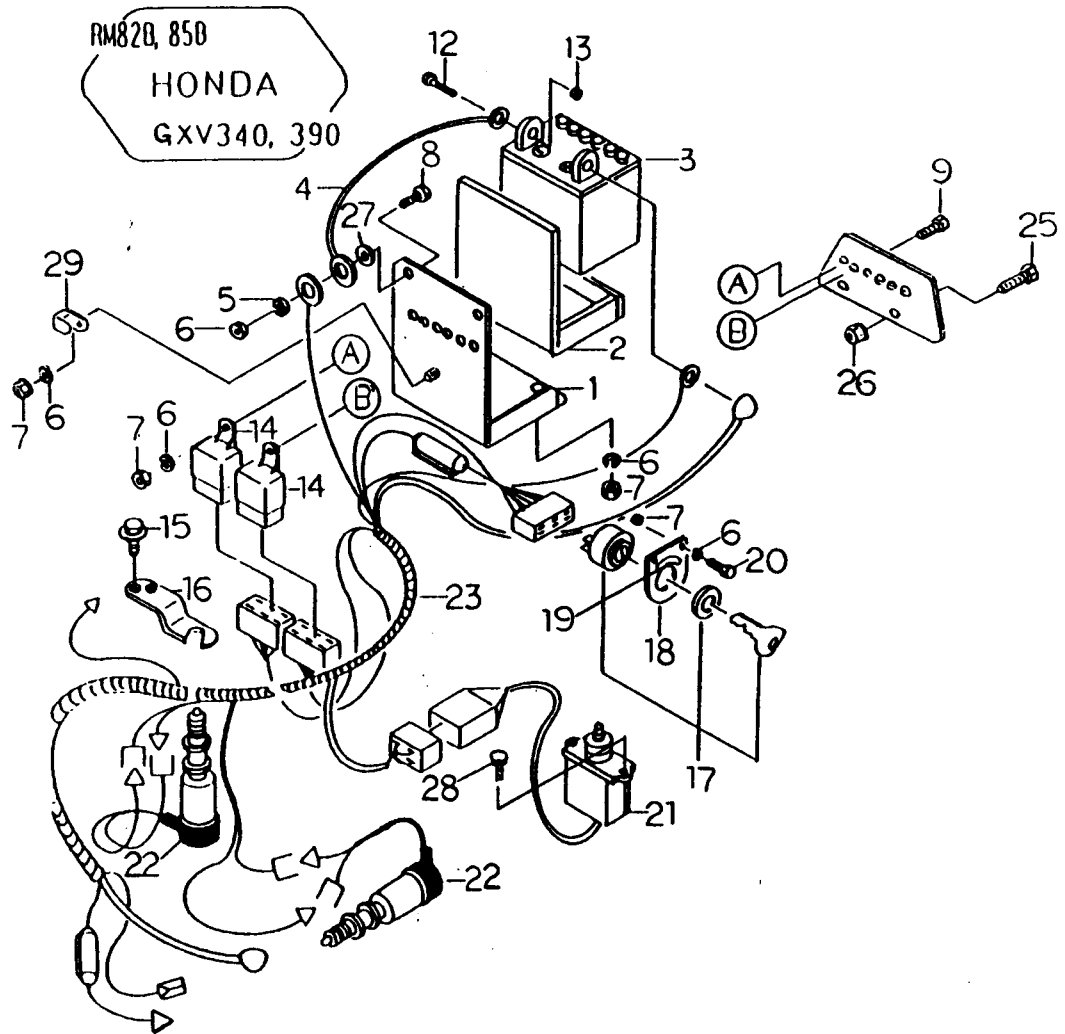


FIG. 5 Engine Outside Equipment

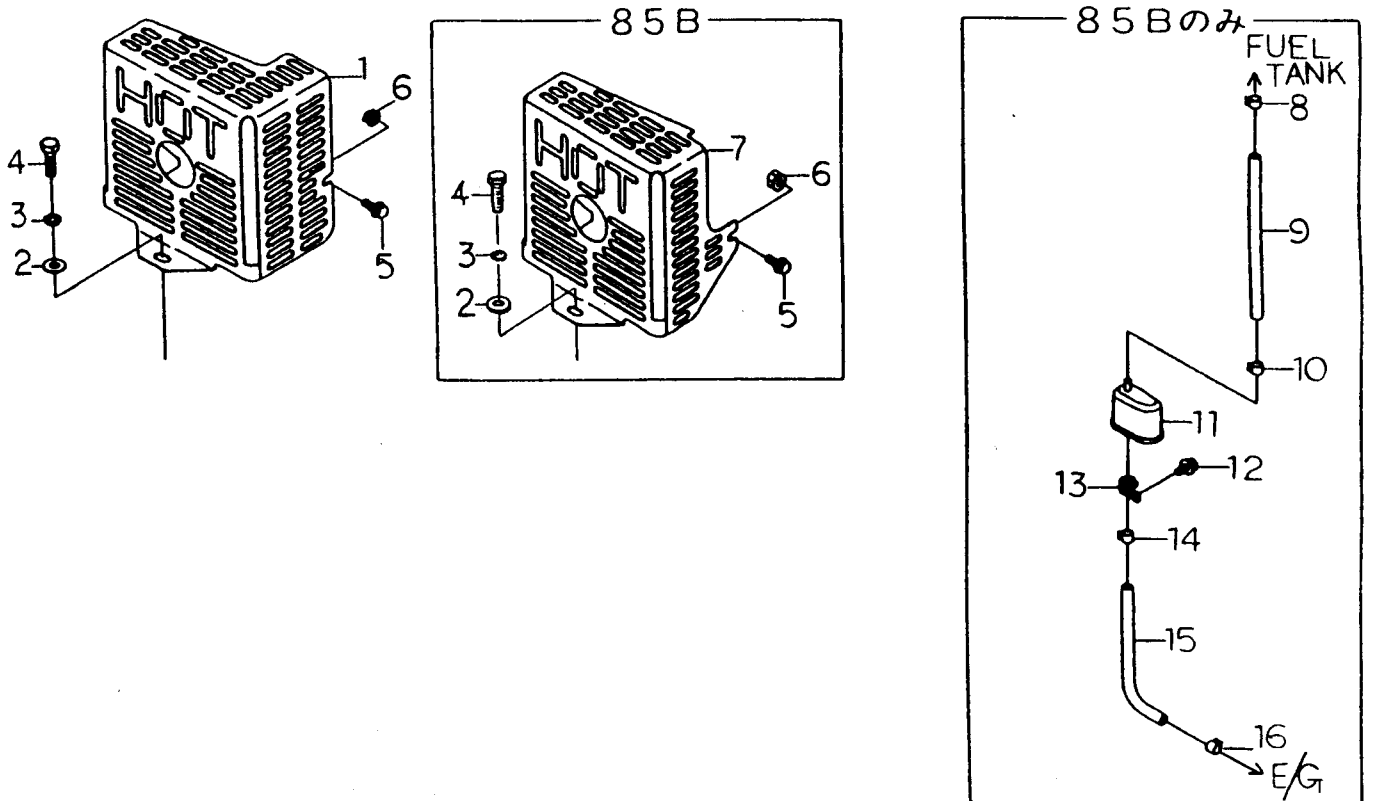


FIG. 4 Electric Equipment

Ref.	Part No.	Part Name	Qty.		Remarks
			RM 82B	RM 85B	
1	80-1490-383-30	Battery Carrier	1	1	*6
2	80-1482-971-00	Cushion Rubber (Battery)	1	1	
3	80-1791-976-00	Battery (28A-19L)	1	1	
4	80-1575-972-00	Cord 235, Plus	1	1	
5	80-1575-973-00	Cord 235, Minus	1	1	
6	89-1750-060002	Spring Washer 6	14	14	
7	89-1511-060042	Hexagonal Nut M6	12	12	
8	89-1111-060252	Hexagonal Bolt M6*25	1	1	
9	89-1111-060142	Hexagonal Bolt M6*14	3	3	
10	89-1711-060002	Washer 6	2	2	
11	89-1111-060122	Hexagonal Bolt M6*12	2	2	
12	Battery Parts	Flange Bolt M6	2	2	
13	Battery Parts	Hexagonal Nut M6	2	2	
14	80-1484-959-00	CA Relay	2	2	
15	89-1136-080202	Hexagonal Bolt (PW.SW) M8*20	2	2	
16	80-1484-282-30	Plate For Fixing Switch	1	1	
17	80-1484-977-00	Key Switch (HONDA) (D16220)	1	1	*5
18	80-1482-332-00	Key Switch BK	1	1	
19	80-1488-912-00	Label, Key (13121)	1	1	
20	89-1111-060152	Hexagonal Bolt M6*15	2	2	
21	80-1484-496-00	Seat Switch (1515C)	1	1	
22	80-1483-983-00	Safety Switch (G1781)	2	2	
23	80-1484-946-10	Wire Harness	1	1	
24	80-1484-384-00	Harness BK	1	1	
25	89-1111-080162	Hexagonal Bolt M8*16	2	2	
26	89-1541-080002	Hexagonal Nut(SW) M8	2	2	
27	89-1812-060002	Toothed Washer 6	1	1	
28	89-1137-060162	Hexagonal Bolt (PW) M6*16	2	2	
29	80-1792-988-00	Harness Clip	1	1	

*5)Serial Number RM82B : After XF98L00038 RM85B : After XG98L00125

*6)Serial Number RM85B : After XG99C00001

FIG. 5 Engine Outside Equipment

Ref.	Part No.	Part Name	Qty.		Remarks
			RM 82B	RM 85B	
1	80-1484-A32-00	Muffler Cover	1		
2	89-1711-100002	Washer 10	1	1	
3	89-1750-100002	Spring Washer 10	1	1	
4	89-1111-100302	Hexagonal Bolt M10*30	1	1	
5	89-1136-080202	Hexagonal Bolt (PW.SW) M8*20	1	1	
6	89-1631-080042	Flange Mini Hexagonal Nut M8	1	1	
7	80-1486-A32-00	Muffler Cover		1	
8	80-1483-988-00	Hose Clip 17		1	
9	80-1483-397-00	Fuel Hose A		1	
10	80-1483-984-00	Hose Clip 12		1	
11	Engine Parts	Fuel Strainer		1	
12	89-1136-080162	Hexagonal Bolt (PW.SW) M8*16		2	
13	80-1792-988-00	Harness Grip 8		1	
14	80-1483-989-00	Hose Clip 7		1	
15	80-1483-398-00	Fuel Hose B		1	
16	80-1483-982-00	Hose Clip 6		1	

FIG. 6 Rotary & Cover

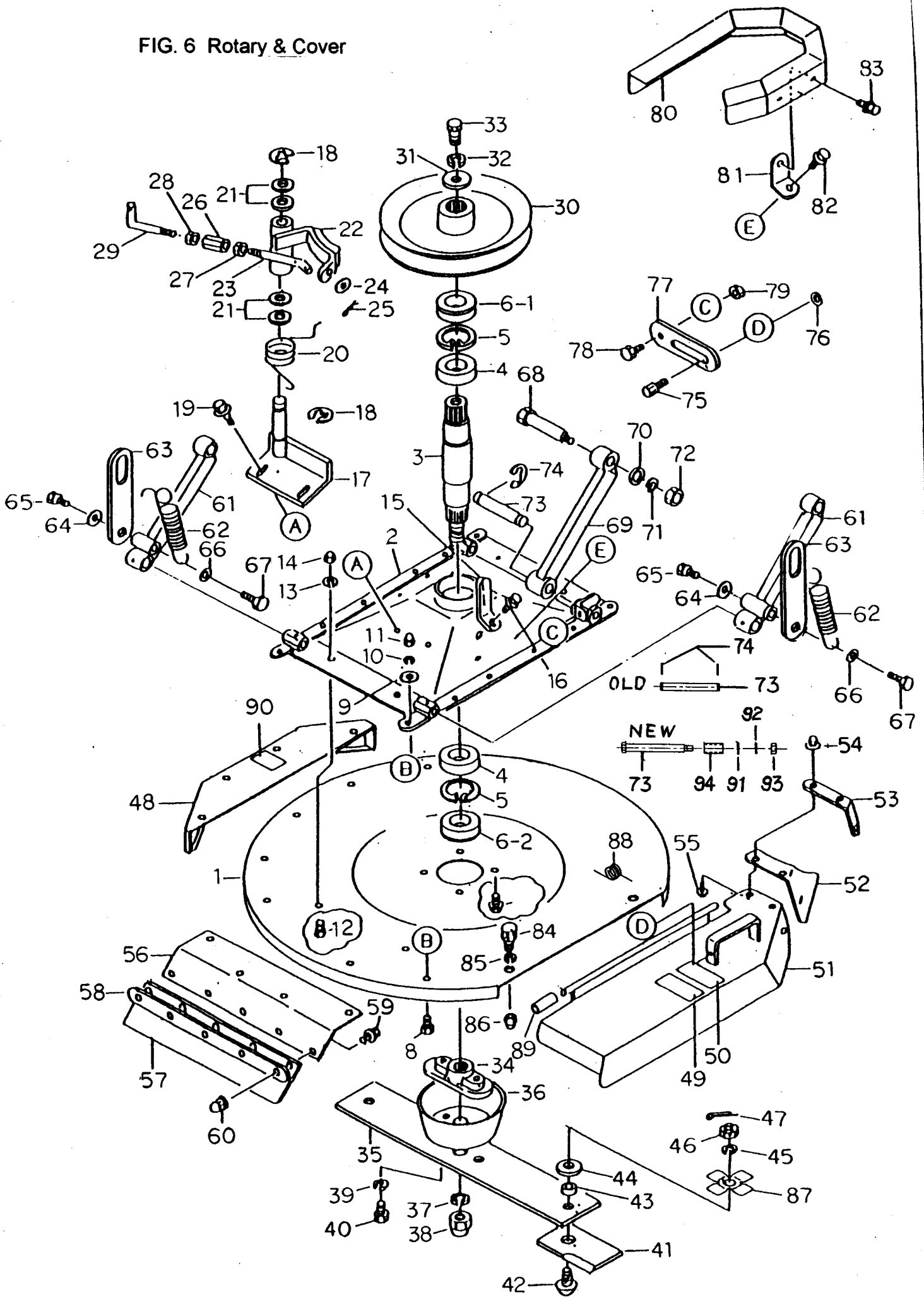


FIG. 6 Rotary & Cover

Ref.	Part No.	Part Name	Qty.		Remarks
			RM 82B	RM 85B	
1	80-1483-731-00	Safety Cover CMP	1	1	
2	80-1484-601-00	Vertical Shaft Holder CMP	1		
	80-1485-601-00	Vertical Shaft Holder CMP		1	
3	80-1482-641-10	Vertical Shaft	1		
	80-1483-641-00	Vertical Shaft		1	
4	89-3115-060064	Bearing 6006 2RS	2		
	89-3115-060074	Bearing 6007 2RS		2	
5	89-2512-000550	Snap Ring (R55)	2		
	89-2512-000620	Snap Ring 62		2	
6-1	83-1415-662-00	Oil Seal AP 35.55.8	1		
	89-5121-356210	Oil Seal UE 35.62.10		1	
6-2	83-1415-662-00	Oil Seal AP 35.55.8	1		
	83-1560-651-00	Oil Seal AP40.62.12		1	
7	89-1135-100202	Hexagonal Bolt (SW) M10*20	4	4	
8	89-1111-080202	Hexagonal Bolt M8*20	12	12	
9	89-1714-080002	Flat Washer 8	12	12	
10	89-1750-080002	Spring Washer 8	12	12	
11	89-1571-080042	Cap Nut M8	12	12	
12	89-1111-080162	Hexagonal Bolt M8*16	12	12	
13	89-1750-080002	Spring Washer 8	12	12	
14	89-1571-080042	Cap Nut M8	12	12	
15	80-1482-617-00	Knife Pulley Belt Holder	2	2	
16	89-1136-080202	Hexagonal Bolt (PW.SW) M8*20	2	2	
17	80-1483-372-00	Brake BK	1	1	
18	89-2521-000100	E-Type Ring	2	2	
19	89-1136-080202	Hexagonal Bolt (PW.SW) M8*20	2	2	
20	80-1482-373-00	Brake Return Spring	1	1	
21	83-1565-329-00	Washer 13x21x2.3	4	4	
22	80-1482-371-20	Knife Brake	1	1	*5
	80-1482-371-30	Knife Brake	1	1	Since Oct. 2000.
23	80-1483-375-10	Brake Rod (R)	1	1	*7
24	89-1711-080002	Washer 8	2	2	
25	89-2120-250202	Split Pin 2.5X20	2	2	*7
26	80-1791-597-00	Turn Buckle M8x50	1	1	
27	89-1511-080042	Hexagonal Nut M8	1	1	
28	83-1481-178-00	Hexagonal Nut (Left) M8	1	1	
29	80-1482-374-10	Brake Rod (Left Screw)	1	1	*5
30	80-1482-571-10	Knife Pulley	1		
	80-1483-571-00	Knife Pulley		1	
31	83-1483-328-00	Washer 12X36X4.5	1	1	
32	89-1750-120002	Spring Washer 12	1	1	
33	89-1113-120302	Hexagonal Bolt (8T) M12*30	1	1	
34	84-1763-833-00	Knife Bracket	1		
	80-1483-733-00	Knife Bracket		1	
35	80-1481-817-00	Knife Stay	1		

FIG. 6 Rotary & Cover

Ref.	Part No.	Part Name	Qty.		Remarks
			RM 82B	RM 85B	
	80-1483-817-00	Knife Stay		1	
36	80-1483-836-00	Knife Neck Guard	1	1	
37	89-1750-160002	Spring Washer 16	1		
	89-1750-200002	Spring Washer 20		1	
38	83-1732-175-00	Bag Nut M16 (ROCK)	1	*10	
	83-1483-175-00	Bag Nut M20 (ROCK)		1 *10	
39	89-1750-100002	Spring Washer 10	2		
	89-1750-120002	Spring Washer 12		2	
40	89-1113-100252	Hexagonal Bolt (8T) M10*25	2		
	89-1113-120302	Hexagonal Bolt (8T) M12*30		2	
41	80-1481-821-00	Blade	2		
	80-1483-821-00	Blade		2	
	80-1481-835-00	Blade Bolt Set	2		Note 1
	80-1481-835-20	Blade Bolt Set	2		
	80-1483-835-00	Blade Bolt Set		2	Note 1
42	80-1481-839-20	Round Head Bolt M12X32	2	*7	
	0207-5020	Round Head Bolt M14X34		2 *7	
43	80-1481-818-00	Knife Collar	2		
	80-1483-818-00	Knife Collar		2	
44	83-1481-328-00	Washer 12X30X3.2	2		
	83-1483-329-00	Washer 14X30X3.2		2	
45	89-1750-120002	Spring Washer 12	2		
	89-1750-140002	Spring Washer 14		2	
46	89-1658-120042	Low Fluted Nut(2 sorts) M12	2		
	89-1658-140042	Low Fluted Nut(2 Sorts) M14		2	
47	89-2120-300252	Split Pin 3X25	2	2	
48	80-1488-751-00	Cover (Left)	1	1	
49	80-1488-928-00	Label, Caution for Pinching	1	1 *1	
50	80-1488-926-00	Label, Caution for Hands&Legs	1	1 *1	
51-55	80-1488-750-00	Cover (Right) Assy	1	1	ref. 51-55
51	80-1488-753-10	Cover CMP (Right)	1	1	
52	80-1484-757-10	Cover Flapper(Right)	1	1 *5	
53	80-1484-758-00	Flapper Holder(Right)	1	1	
54	83-1575-189-00	Flange Cap Nut M6	3	3	
55	89-1137-060152	Hexagonal Bolt (PW) M6*15	3	3	
56-60	80-1482-752-00	Rear Guard Assy	1	1	ref. 56-60
56	80-1482-755-00	Rear Guard	1	1	
57	80-1482-781-00	Rear Guard Flapper	1	1	
58	80-1482-782-00	Rear Guard Flapper Holder	1	1	
59	89-1137-060152	Hexagonal Bolt (PW) M6*15	5	5	
60	83-1575-189-00	Flange Cap Nut M6	5	5	
61	80-1484-708-00	Link (Rear)	2	2	
62	80-1484-276-00	Spring	2	2	
63	80-1484-275-20	Connecting Plate	2	2	
64	83-1020-312-00	Washer 8X30X3.2	1	1	
65	89-1135-080252	Hexagonal Bolt (SW) M8*25	2	2	
66	89-1711-080002	Washer 8	2	2	

FIG.

Re
67
68
69
70
71
72
73
74
75
76
77
78
79
80
81
82
83
84
85
86
87
88
89
90
91
92
93
94
95
96
97
98
99
100
101
102
103
104
105
106
107
108
109
110
111
112
113
114
115
116
117
118
119
120
121
122
123
124
125
126
127
128
129
130
131
132
133
134
135
136
137
138
139
140
141
142
143
144
145
146
147
148
149
150
151
152
153
154
155
156
157
158
159
160
161
162
163
164
165
166
167
168
169
170
171
172
173
174
175
176
177
178
179
180
181
182
183
184
185
186
187
188
189
190
191
192
193
194
195
196
197
198
199
200

FIG. 6 Rotary & Cover

Ref.	Part No.	Part Name	Qty.		Remarks
			RM 82B	RM 85B	
67	89-1135-080162	Hexagonal Bolt (SW) M8*16	2	2	
68	80-1481-709-10	Link Bolt	6	6	*5
69	80-1484-707-00	Link (Front)	2	2	
70	89-1711-120002	Washer 12	6	6	
71	89-1750-120002	Spring Washer 12	6	6	
72	89-1551-120002	Hexagonal U Nut M12	6	6	
73	Discontinued	Link Pin	2	2	*12
73	0207-51600	Link Bolt	2	2	*9
74	89-2521-000150	E-Type Ring 15	4	4	
	89-2521-000120	E-Type Ring 12	4	4	*13
75	80-1488-747-00	Right Cover Vertical Arm Bolt	1	1	
76	89-1711-080002	Washer 8	1	1	
77	80-1488-746-00	Cover Arm (Right)	1	1	
78	89-1113-080202	Hexagonal Bolt (8T) M8*20	1	1	
79	89-1551-080002	Hexagonal U Nut M8	1	1	
80	80-1484-501-30	Knife Belt Cover	1	1	*8
81	80-1484-506-00	Knife Belt Cover Stay	3	3	
82	89-1136-080202	Hexagonal Bolt (PW.SW) M8*20	3	3	
83	89-1136-080162	Hexagonal Bolt (PW.SW) M8*16	3	3	
84	80-1488-748-00	Bolt For Right Cover Receiver	2	2	
85	89-1750-100002	Spring Washer 10	2	2	
86	89-1571-100042	Cap Nut M10	2	2	
87	80-1484-837-00	Nut Guard 12	2		
	80-1487-837-00	Nut Guard 14		2	
88	80-1488-749-00	Spring for Right Cover	1	1	
89	80-1484-A33-00	Collar for Right Cover	1	1	
90	80-1488-926-00	Label, Caution for Hands&Legs	1	1	*1
91	89-1711-120002	Washer 13X21	2	2	*9
92	89-1750-120002	Spring Washer 12	2	2	*9
93	89-1551-120002	Hexagonal U Nut M12	2	2	*9
94	0207-51500	Link Collar	2	2	*9

Note 1 :

Blade Bolt Set contains parts ref. 42, 45-47, 87.

Ref 73) 80-1484-706-10 Link Pin is equivalent to
0207-51600, 89-1711-120002, and 89-1750-120002

Ref 73) 80-1484-706-30 Link Pin is equivalent to 89-1551-120002 & 0207-51500

FIG. 6 Rotary & Cover

Ref.	Part No.	Part Name	Qty.		Remarks
			RM 82B	RM 85B	
*1)	Serial Number	RM82B : After XF96M00060	RM85B : After	XG96M00001	
*2)	Serial Number	RM82B : Before XF96M00060	RM85B : Before	XG96M00001	
*3)	Serial Number	RM82B : After XF98C00001	RM85B : After	XG97A00025	
*4)	Serial Number	RM82B : After XF98C00001	RM85B : After	XG98C00001	
*5)	Serial Number	RM82B : After XF98L00038	RM85B : After	XG98L00125	
*6)	Serial Number	RM85B : After XG99C00001			
*7)	Serial Number	RM82B : After XF99M00001	RM85B : After	XG99F00039	
*8)	Serial Number	RM82B : After XF00A00001	RM85B : After	XG00A00001	
*9)	Serial Number	RM85B : After XG00H00189			
*10)	89-1611-080042 and 83-1490-198-00 are one set.				
*11)	4 pieces are necessary for unit before February 1998				
*12)	Should be ordered together with 0207-51600, 89-1711-120002, 89-1750-120002, 89-1551-120002 and 0207-51500.				
*13)	Serial Number	RM82B : After XF98C00001	RM85B : After	XG98C00001, until XG00C00100	

89-
89-

RM85B PARTS CATALOG

AFTER PRODUCTION 2001

NEW FRONT WHEEL PART

RM85B (EXPORT) XG01A00239~

