

This catalog covers:

TJ045E-□S51

This fig. covers:

TITLE

PARTS CATALOG

2-STROKE ENGINE

TJ045E

PRODUCT CODE	NOTE
TJ045E-KS51	BRUSH-CUTTER



This catalog covers:

TJ045E-□S51

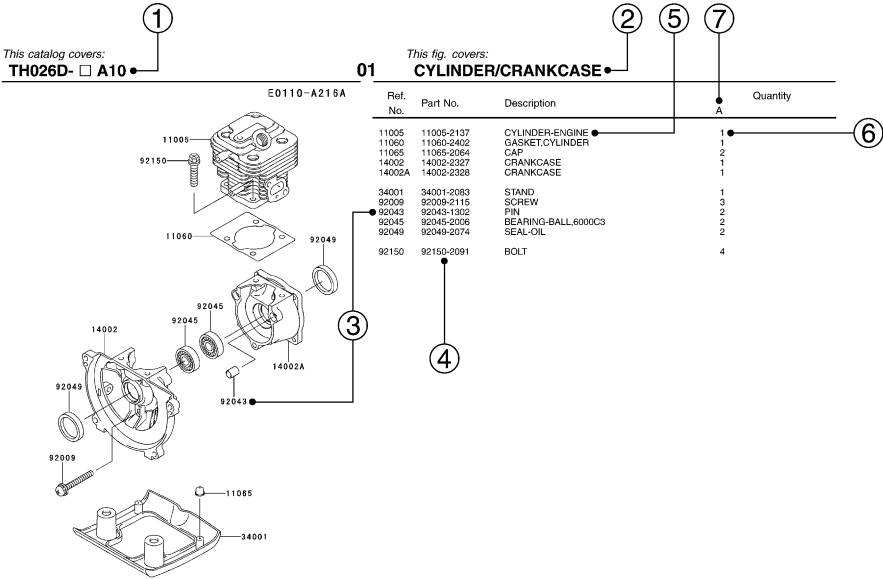
PARTS CATALOG INTRODUCTION

This parts catalog lists parts and sub-assemblies provided as service parts. When it becomes necessary to replace parts, always use KAWASAKI GENUINE PARTS which have passed strict inspection which guarantees quality and performance.

1. HOW TO ORDER PARTS

- When ordering the parts, be sure to use the parts catalog corresponding to the product code. Check the product revision codes on the product and the catalog.
Product Code (example) : FA130D-**AA00**
Product Revision Code
- Specify the part code (all digits) exactly as listed in this catalog on your parts order.
- The parts not shown in the illustrations of this catalog are not sold separately; only the complete units or next higher assemblies illustrated are supplied as the service parts.

2. EXPLANATION OF PARTS CATALOG FORMAT



1) Product Code

This code describes the product code covered by this catalog. The product revision code, which is a part of the product code, is omitted.

2) Part Group Title

This title is the representative name for the group of parts illustrated on the page.

3) Reference Number

The reference numbers are shown on the illustration and the list as the link between them.

This fig. covers:

PARTS LIST INFORMATION

4) Part Number

This is the key of your parts ordering. Three kinds of part number are used in this catalog.

- Structure 1
□□□□□□-□□□□□□-□□
Part Revision Code
- Structure 2
□□□□□□-□□□□□□-□□
Color Code for Painted Part
- Standard Hardware Number
(for bolts, nuts, washer, or the like)
□□□□□□□□
Size Code
Material and Surface Treatment Code
Item Code

5) Description and Additional Information

The part name, the location, the size, and the serial number as additional information, etc. are described here. Use them to find out and check the part required.

When a part number is changed without change of the product revision code and the changed parts are not interchangeable, the serial number of the product is noted as follows;

- (FA130 - 100001) : Affected units are from beginning of the product of the product code up to and including this serial number.
- (FA130 - 100002 -) : Affected units are from this serial number and above.
- (FA130 - 100002 - FA130 - 110001) : Affected units are in this serial number range.

6) Quantity

The figure shows quantity of the part required at the indicated position on the illustration and for the specified product revision code.

The asterisk (*) on this column means the part can be used as the substitute on the product and is supplied until the stock is exhausted.

Note:Some small parts will be supplied by units.

Example: If six (6) bolts are ordered and the minimum quantity per unit is five (5), two (2), units of the bolt will be delivered.

7) Product Revision Code

This Code indicates an important change which affects the service parts interchangeability.

3. ABBREVIATIONS

#.....Number	FR.....Front	RH.....Right Hand
&.....And	G.....Gram	RPM.....Revolutions Per Minute
(+).....Plus	HEX.....Hexagonal	RR.....Rear
(-).....Minus	ID=.....Inside Diameter	STD.....Standard
2ND.....Second	IN.....Inch	T.....Teeth
3RD.....Third	L=.....Length	T=.....Thickness
4TH.....Fourth	LH.....Left Hand	U/S.....Under Size
A.....Ampere	LWR.....Lower	UPP.....Upper
AR.....As Required	MM.....Millimeter	V.....Volt
ASSY.....Assembly	O/S.....Over Size	W.....Watt
CNT.....Center	OD=.....Outside Diameter	
COMP.....Complete	REF.....Reference	

This catalog covers:

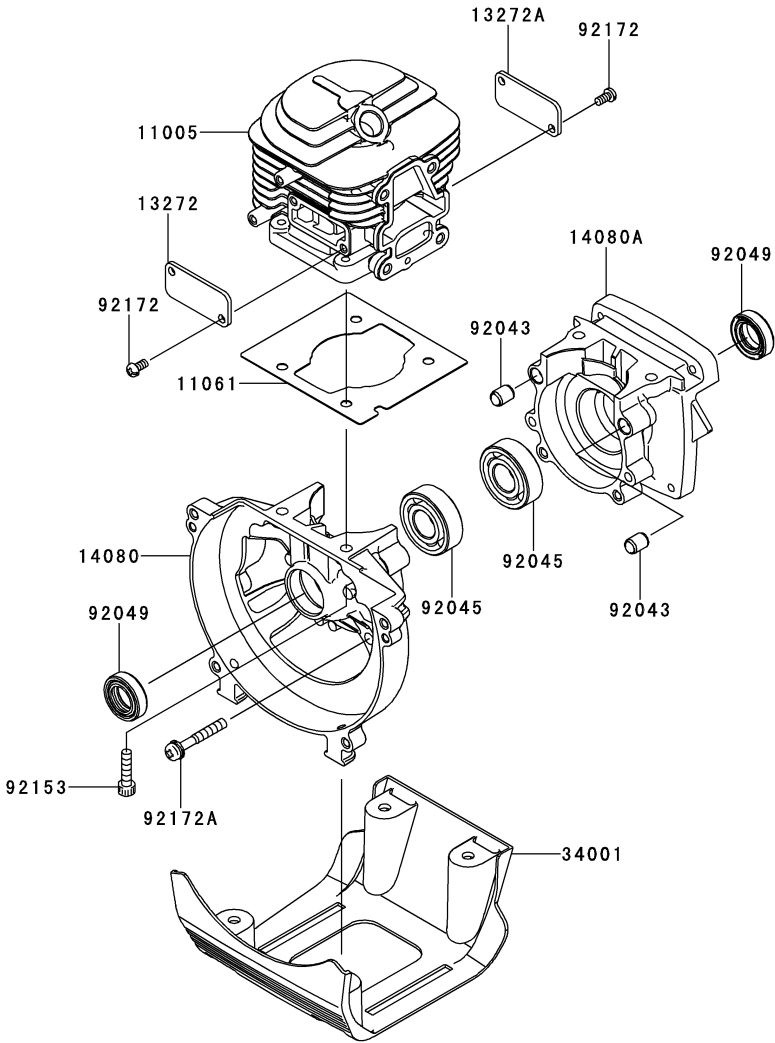
TJ045E- □ S51

01

This fig. covers:

CYLINDER/CRANKCASE

E0110-A772A



Ref. No.	Part No.	Description	Quantity
11005	11005-2165	CYLINDER-ENGINE	1
11061	11061-2226	GASKET,CYLINDER	1
13272	13272-2035	PLATE	1
13272A	13272-2036	PLATE	1
14080	14080-2076	CRANKCASE	1
14080A	14080-2077	CRANKCASE	1
34001	34001-2092	STAND	1
92043	92043-2257	PIN	2
92045	92045-2279	BEARING-BALL,6202C3	2
92049	92049-2276	SEAL-OIL,15X25X7	2
92153	92153-2136	BOLT,SOCKET,5X20	4
92172	92172-2103	SCREW,4X8	4
92172A	92172-2115	SCREW,5X35	4

This catalog covers:

TJ045E- □ S51

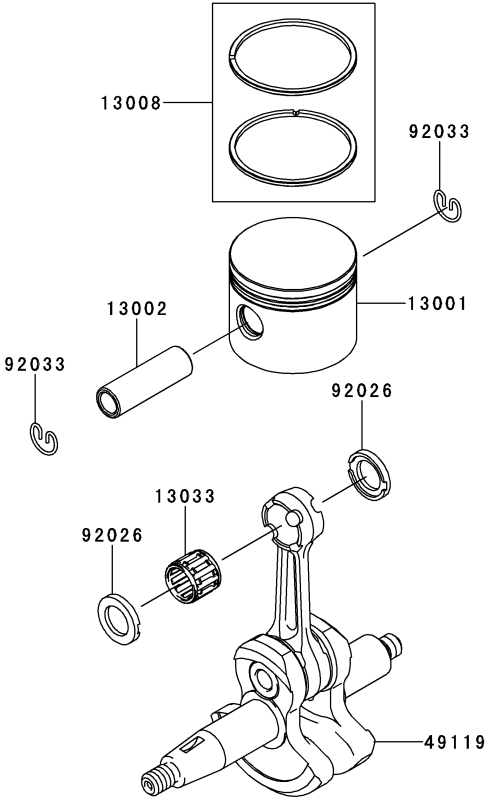
02

This fig. covers:

PISTON/CRANKSHAFT

E0120-A373A

Ref. No.	Part No.	Description	Quantity
13001	13001-2194	PISTON-ENGINE	1
13002	13002-2103	PIN-PISTON	1
13008	13008-6074	RING-SET-PISTON	1
13033	13033-2063	BEARING-SMALL END	1
49119	49119-2231	CRANKSHAFT-ASSY	1
92026	92026-2364	SPACER	2
92033	92033-2200	RING-SNAP	2



This catalog covers:

TJ045E- □ S51

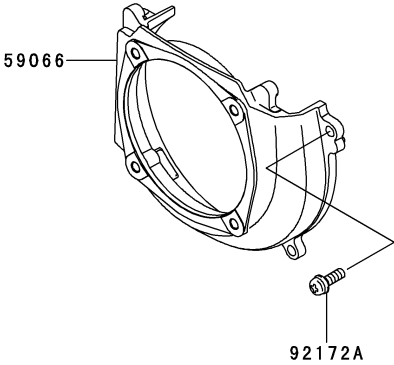
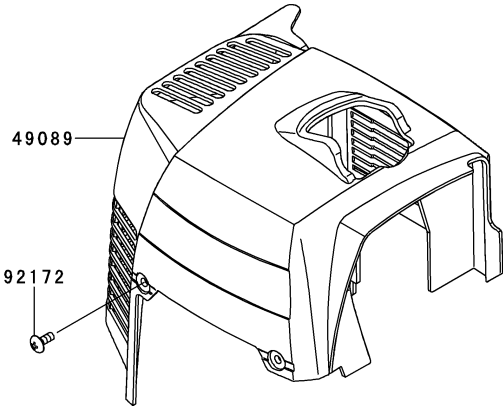
03

This fig. covers:

COOLING-EQUIPMENT

E0150-B091A

Ref. No.	Part No.	Description	Quantity
49089	49089-0720	SHROUD-ENGINE	1
59066	59066-0709	HOUSING-FAN	1
92172	92172-2060	SCREW,4X10	2
92172A	92172-2125	SCREW,5X16	4



This catalog covers:

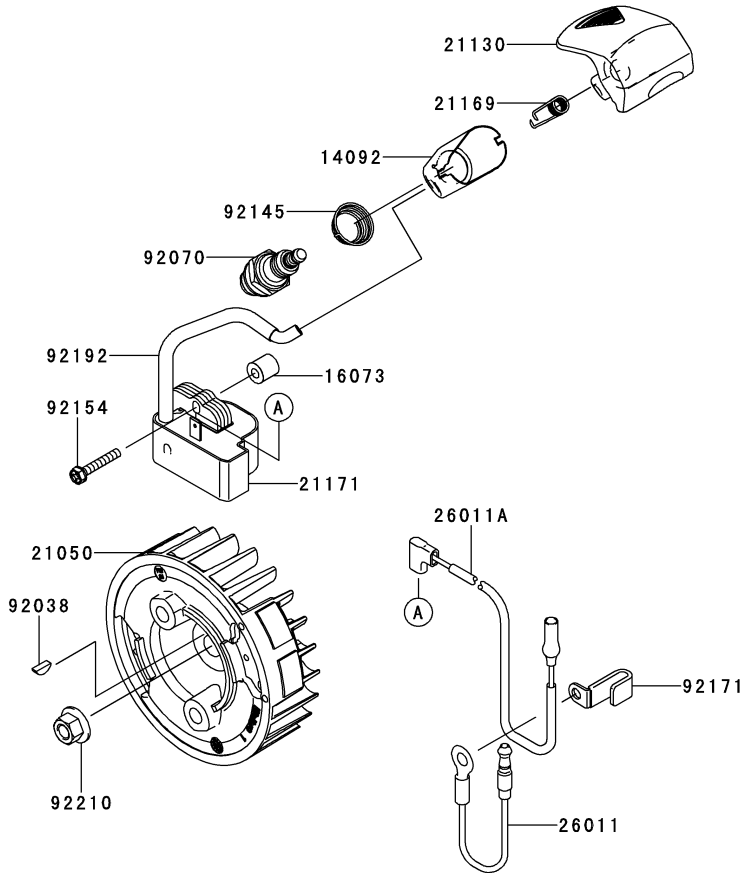
TJ045E- □ S51

04

This fig. covers:

ELECTRIC-EQUIPMENT

E0160-B633B



Ref. No.	Part No.	Description	Quantity
14092	14092-2002	COVER	1
16073	16073-2239	INSULATOR	2
21050	21050-2333	FLYWHEEL	1
21130	21130-2080	CAP-SPARK PLUG	1
21169	21169-2078	TERMINAL	1
21171	21171-0709	COIL-ASSY-IGNITION	1
26011	26011-2389	WIRE-LEAD	1
26011A	26011-2399	WIRE-LEAD	1
92038	92038-2106	KEY	1
92070	92070-2121	PLUG-SPARK,BPMR7A(NGK)	1
92145	92145-2193	SPRING	1
92154	92154-2041	BOLT,4X25	2
92171	92171-2083	CLAMP	1
92192	92192-2135	TUBE	1
92210	92210-0737	NUT,8MM	1

This catalog covers:

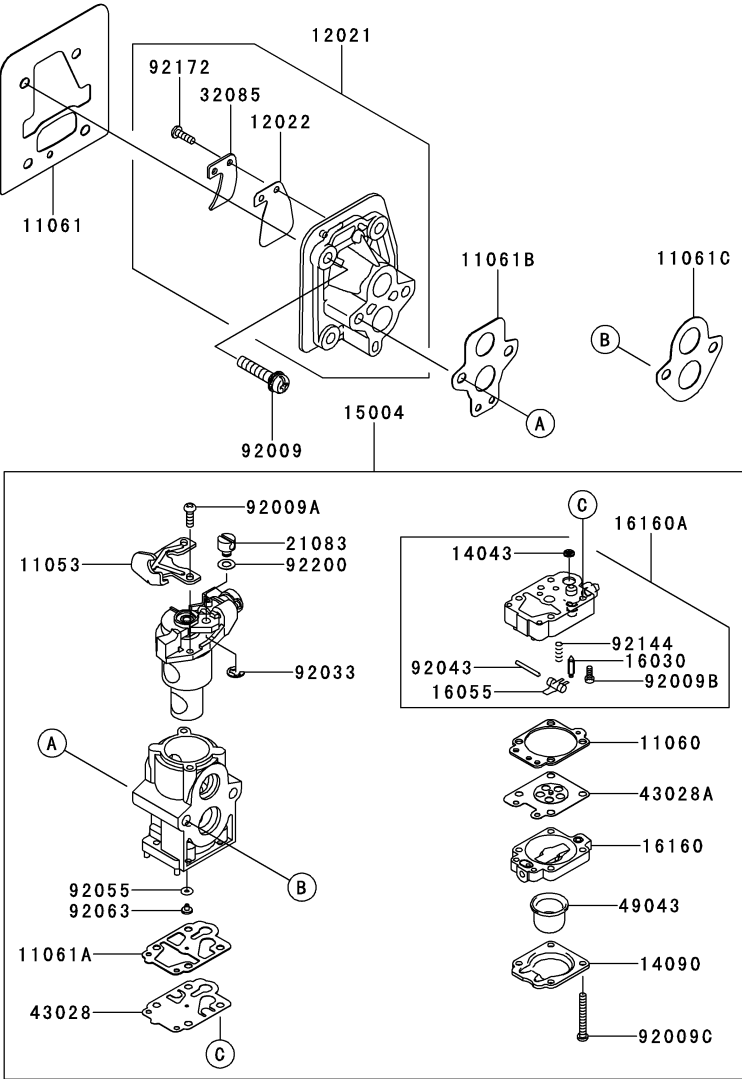
TJ045E- □ S51

05

This fig. covers:

CARBURETOR

E0180-A933A



Ref. No.	Part No.	Description	Quantity
11053	11053-2066	BRACKET	1
11060	11060-2111	GASKET	1
11061	11061-0724	GASKET,INSULATOR-CYLINDER	1
11061A	11061-2054	GASKET	1
11061B	11061-2237	GASKET,CARBURETOR-INSULATOR	1
11061C	11061-2243	GASKET,AC-CARBURETOR	1
12021	12021-0704	VALVE-ASSY-REED	1
12022	12022-2063	VALVE-REED	1
14043	14043-2051	FILTER	1
14090	14090-2017	COVER,PRIMER PUMP	1
15004	15004-0708	CARBURETOR-ASSY	1
16030	16030-2078	VALVE-FLOAT	1
16055	16055-2051	LEVER	1
16160	16160-2089	BODY	1
16160A	16160-2103	BODY	1
21083	21083-2073	ARM	1
32085	32085-2109	STOPPER	1
43028	43028-2067	DIAPHRAGM	1
43028A	43028-2096	DIAPHRAGM	1
49043	49043-2067	PUMP-PRIMING	1
92009	92009-2235	SCREW,5X25	4
92009A	92009-2277	SCREW	2
92009B	92009-2336	SCREW	1
92009C	92009-2337	SCREW	4
92033	92033-2078	RING-SNAP	1
92043	92043-2094	PIN	1
92055	92055-2147	RING-O	1
92063	92063-2364	JET-MAIN,#39	1
92144	92144-2308	SPRING	1
92172	92172-2123	SCREW,3X12	1
92200	92200-2074	WASHER	1

This catalog covers:

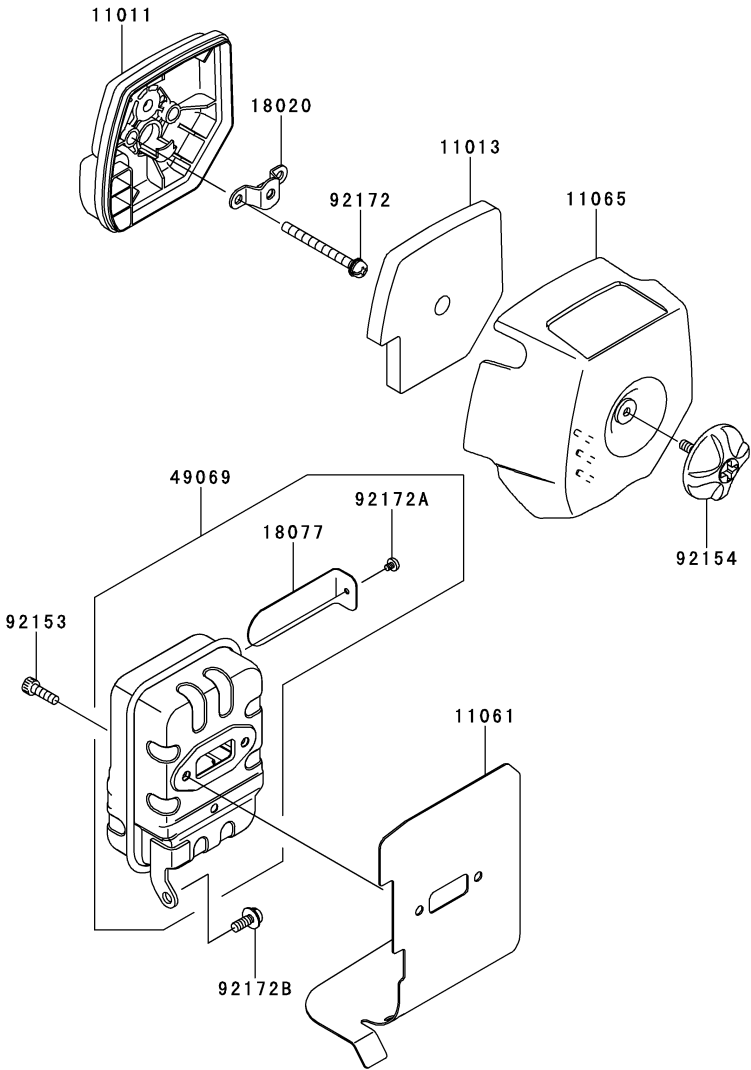
TJ045E- □ S51

06

This fig. covers:

AIR-FILTER/MUFFLER

E0190-B383A



Ref. No.	Part No.	Description	Quantity
11011	11011-0717	CASE-AIR FILTER	1
11013	11013-0711	ELEMENT-AIR FILTER	1
11061	11061-2227	GASKET,MUFFLER	1
11065	11065-0705	CAP	1
18020	18020-2096	BAFFLE	1
18077	18077-2142	ARRESTER-SPARK	1
49069	49069-0744	MUFFLER-ASSY	1
92153	92153-2137	BOLT,SOCKET,5X16	2
92154	92154-2053	BOLT	1
92172	92172-0709	SCREW,5X55	2
92172A	92172-2112	SCREW	1
92172B	92172-2114	SCREW,5X14	1

This catalog covers:

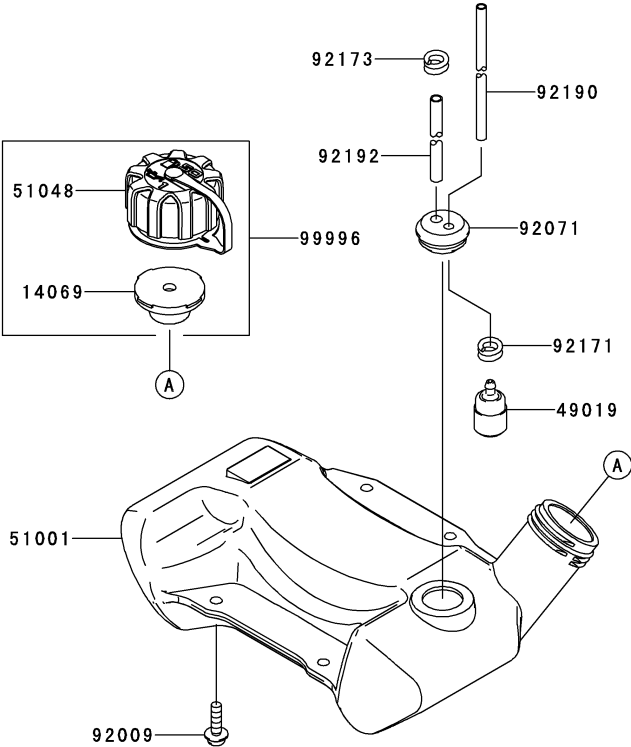
TJ045E- □ S51

07

This fig. covers:

FUEL-TANK/FUEL-VALVE

E0200-A813A



Ref. No.	Part No.	Description	Quantity
14069	14069-2088	BREATHER	1
49019	49019-2114	FILTER-FUEL	1
51001	51001-2341	TANK-COMP-FUEL	1
51048	51048-2083	CAP-ASSY-TANK	1
92009	92009-2383	SCREW,5X20	4
92071	92071-2142	GROMMET,FUEL TANK	1
92171	92171-2073	CLAMP	1
92173	92173-2009	CLAMP	1
92190	92190-2157	TUBE,3X5X200	1
92192	92192-2149	TUBE,3X6X105	1
99996	99996-6089	CAP-TANK & BREATHER,ASSY	1

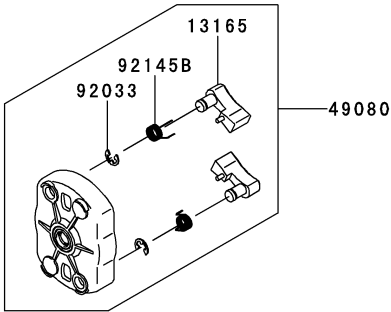
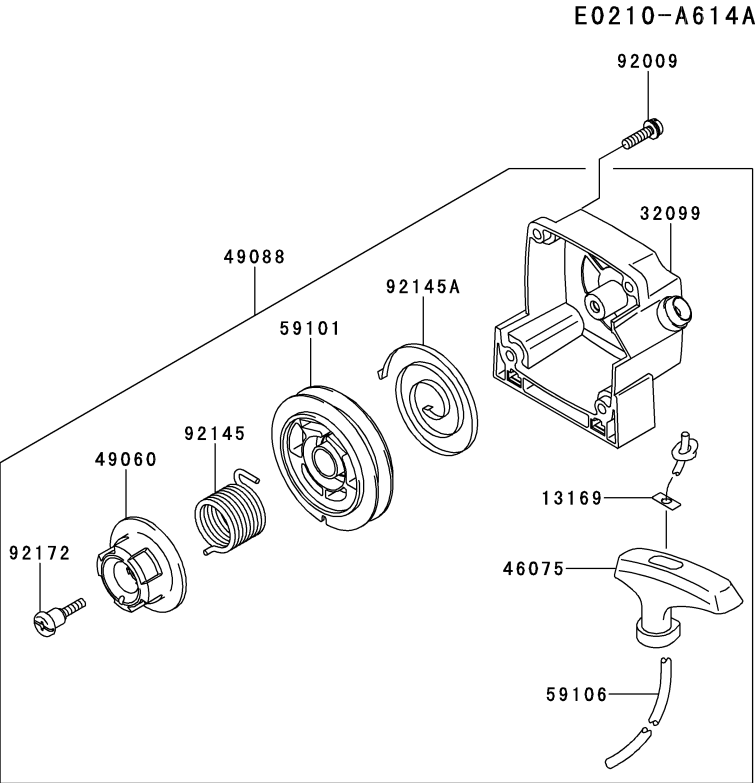
This catalog covers:

TJ045E- □ S51

08

This fig. covers:

STARTER



Ref. No.	Part No.	Description	Quantity
13165	13165-2109	PAWL,RECOIL-STARTER	2
13169	13169-2386	PLATE,RECOIL STARTER	1
32099	32099-0716	CASE	1
46075	46075-2129	GRIP,RECOIL STARTER	1
49060	49060-0556	CAM,PLATE	1
49080	49080-0705	PULLEY-STARTING	1
49088	49088-0710	STARTER-RECOIL	1
59101	59101-0010	REEL,STARTER-RECOIL	1
59106	59106-0554	ROPE,3.8X1000	1
92009	92009-2249	SCREW,5X20	4
92033	92033-2010	RING-SNAP	2
92145	92145-0836	SPRING	1
92145A	92145-0837	SPRING,SPIRAL	1
92145B	92145-2148	SPRING	2
92172	92172-0705	SCREW	1

This catalog covers:

TJ045E- □ S51

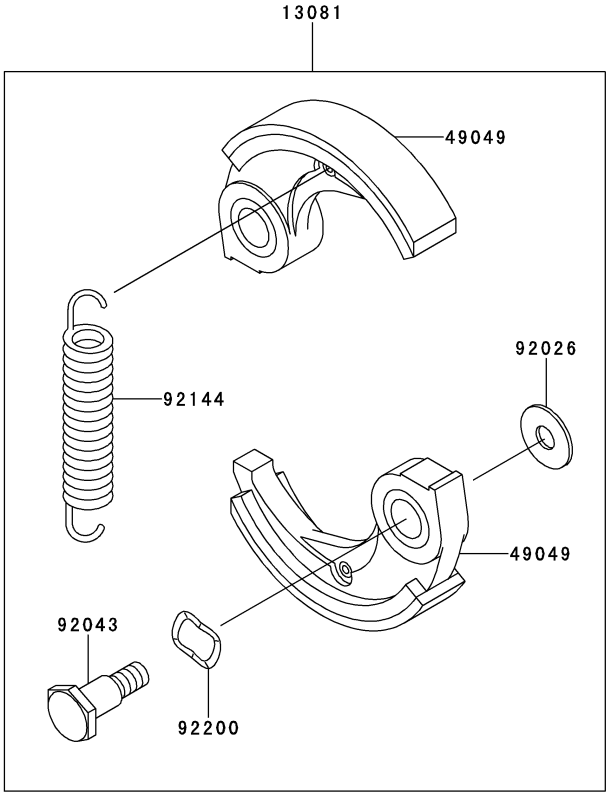
09

This fig. covers:

P.T.O-EQUIPMENT

E0220-A008D

Ref. No.	Part No.	Description	Quantity
13081	13081-2220	CLUTCH-ASSY	1
49049	49049-2075	SHOE-CLUTCH	2
92026	92026-2125	WASHER	2
92043	92043-2210	PIN,CLUTCH	2
92144	92144-2390	SPRING	1
92200	92200-2064	WASHER,SPRING,10.5X14.5X0.3	2



This catalog covers:

TJ045E- □ S51

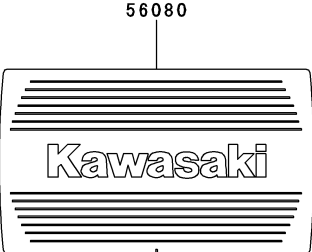
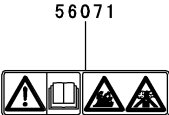
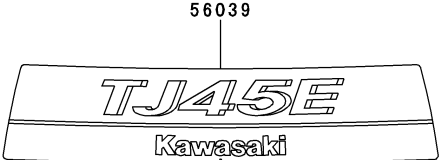
10

This fig. covers:

LABEL

F0290-B385D

Ref. No.	Part No.	Description	Quantity
56039	56039-0702	LABEL-PRODUCT	1
56071	56071-2010	LABEL-WARNING	1
56080	56080-0715	LABEL-BRAND	1



This catalog covers:

TJ045E- □ S51

This fig. covers:

PART NAME INDEX

AIR-FILTER/MUFFLER.....06

CARBURETOR.....05

COOLING-EQUIPMENT.....03

CYLINDER/CRANKCASE01

ELECTRIC-EQUIPMENT.....04

FUEL-TANK/FUEL-VALVE.....07

LABEL.....10

P.T.O-EQUIPMENT.....09

PISTON/CRANKSHAFT02

STARTER.....08

