

Contractor 2017 Arp 478751



Documents

540mm Quick Cut Blade Assembly

21" Catcher Assembly, Masport Black

Handel

Deck

Rear Axel

Customer Option

Gearbox

Illustration 540mm Quick Cut Blade Assembly

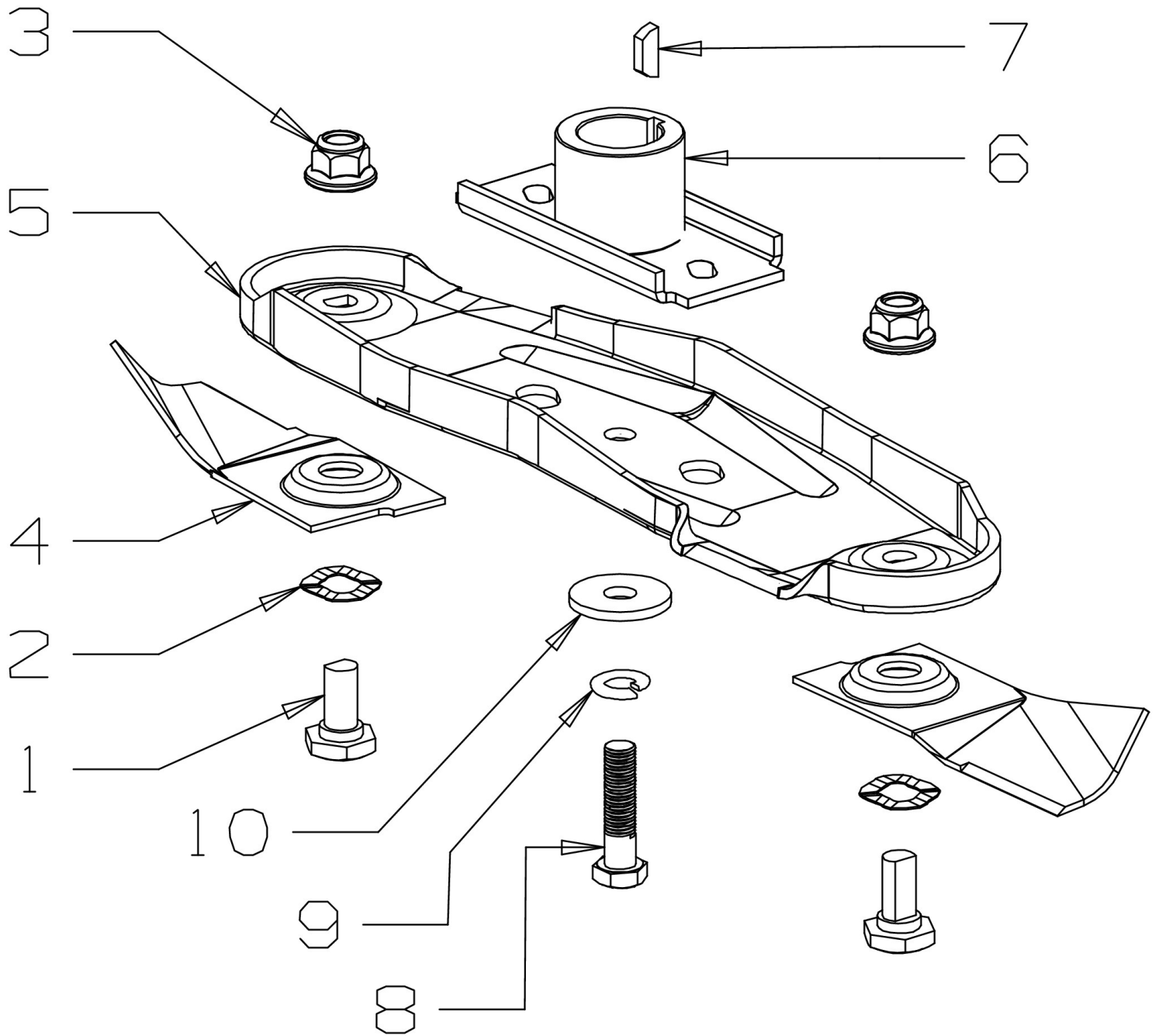


Illustration 540mm Quick Cut Blade Assembly

No.	Qty	Code	Description	Notes
1	2	MA-581707	BOLT HEX, BLADE M10 X 22 STL	
2	2	MA-580693	WASHER, WAVY 13.4 X 24.2 X .51 TP	
3	2	MA-503672	NUT, M10 HEX NYLOC FLANGE ZP	
4	2	MA-579749	BLADE-QUICK CUT, 540MM BLK	
5	1	MA-980653	CARRIER-BLADE, Q/CUT BLACK P/C	
6	1	MA-031640	DRIVER ASSY-BLADE, 25MM	
7	1	MA-503363	KEY-W/RUFF 5/8 X 3/16 X 1/4	
8	1	MA-503543	BOLT	
9	1	MA-500204	WASHER	
10	1	MA-503667	WASHER, FLT 9. 75X 30 X 3.0 ZP	
		MA-783690	BOLT SET, 2 BLADE ASSEMBLY MAS	
		MA-779749	BLADE-QUICK CUT, 540(2PER) MAS	
		MA-769450	Blade Assy, 540mm, Includes Items: 2 x 1, 2, 3, 4 & 1 x 5	

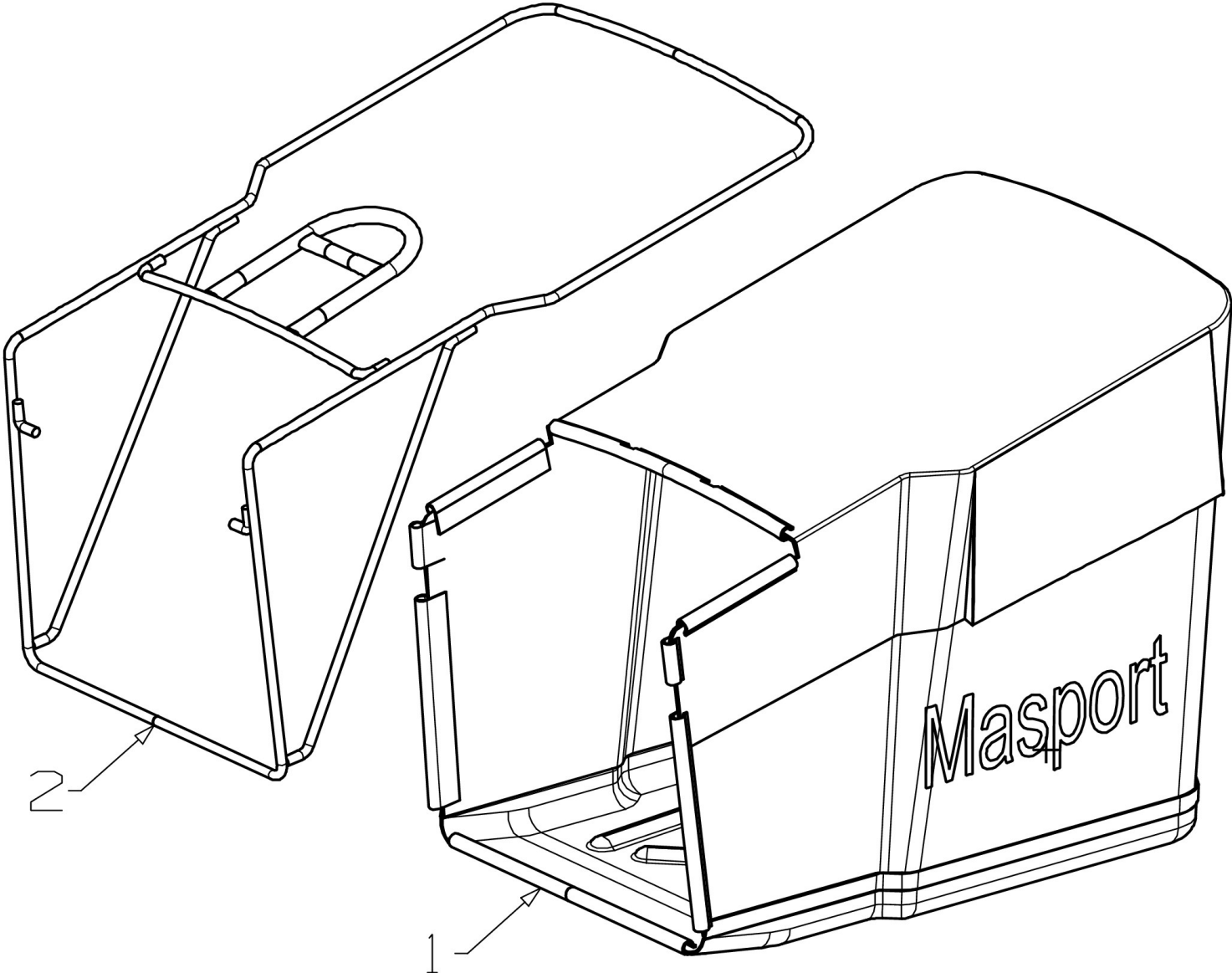
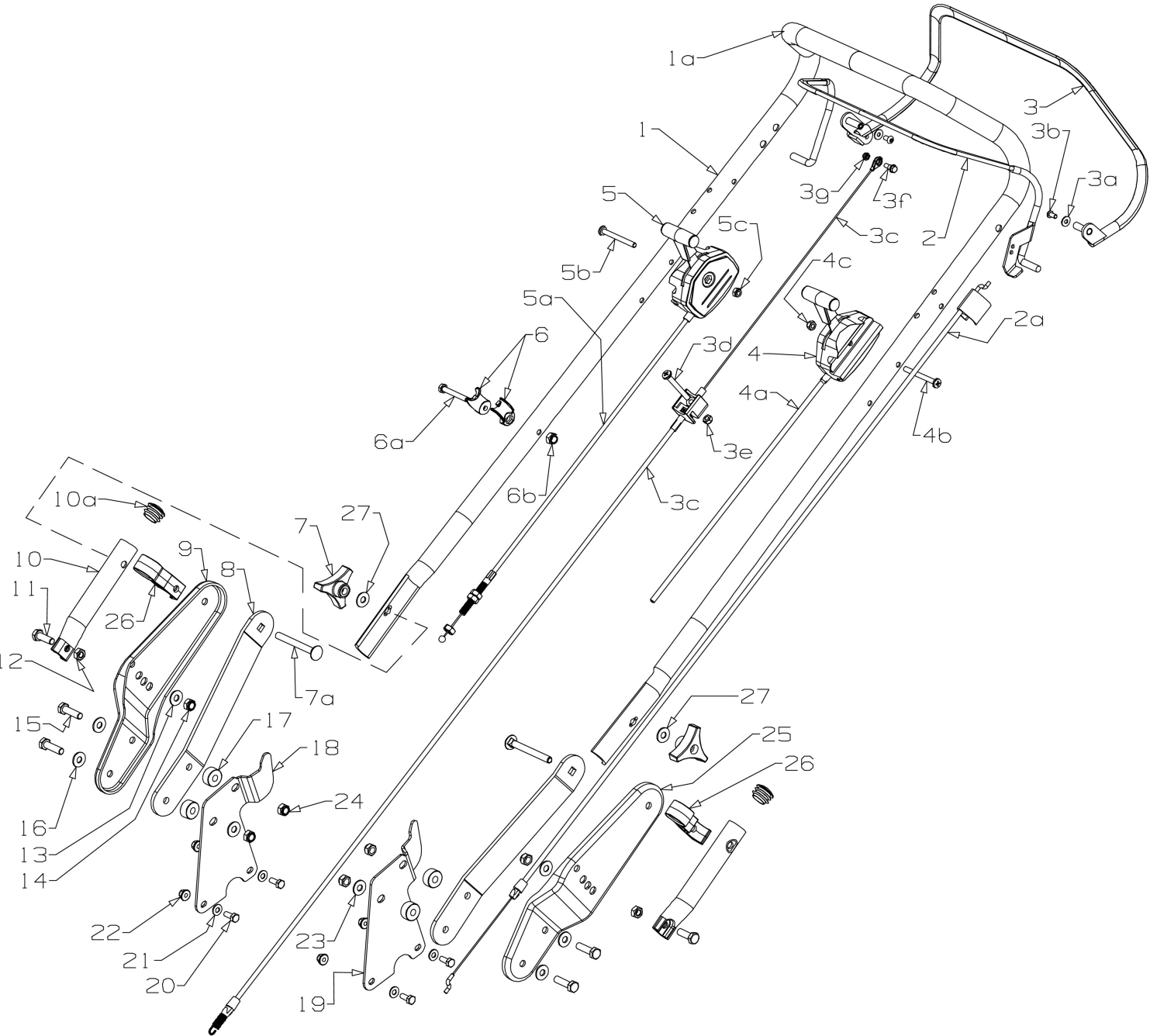


Illustration 21" Catcher Assembly, Masport Black

No.	Qty	Code	Description	Notes
1	1	MA-564318	BAG ASSY-CATCH CONT FAB 21 EU	
2	1	MA-564312	FRAME ASSY-CATCHER CONT 21BLK	



S21S-LH3-UPT-KL-CTLH-Z-OPC-SPV3-USA-964961

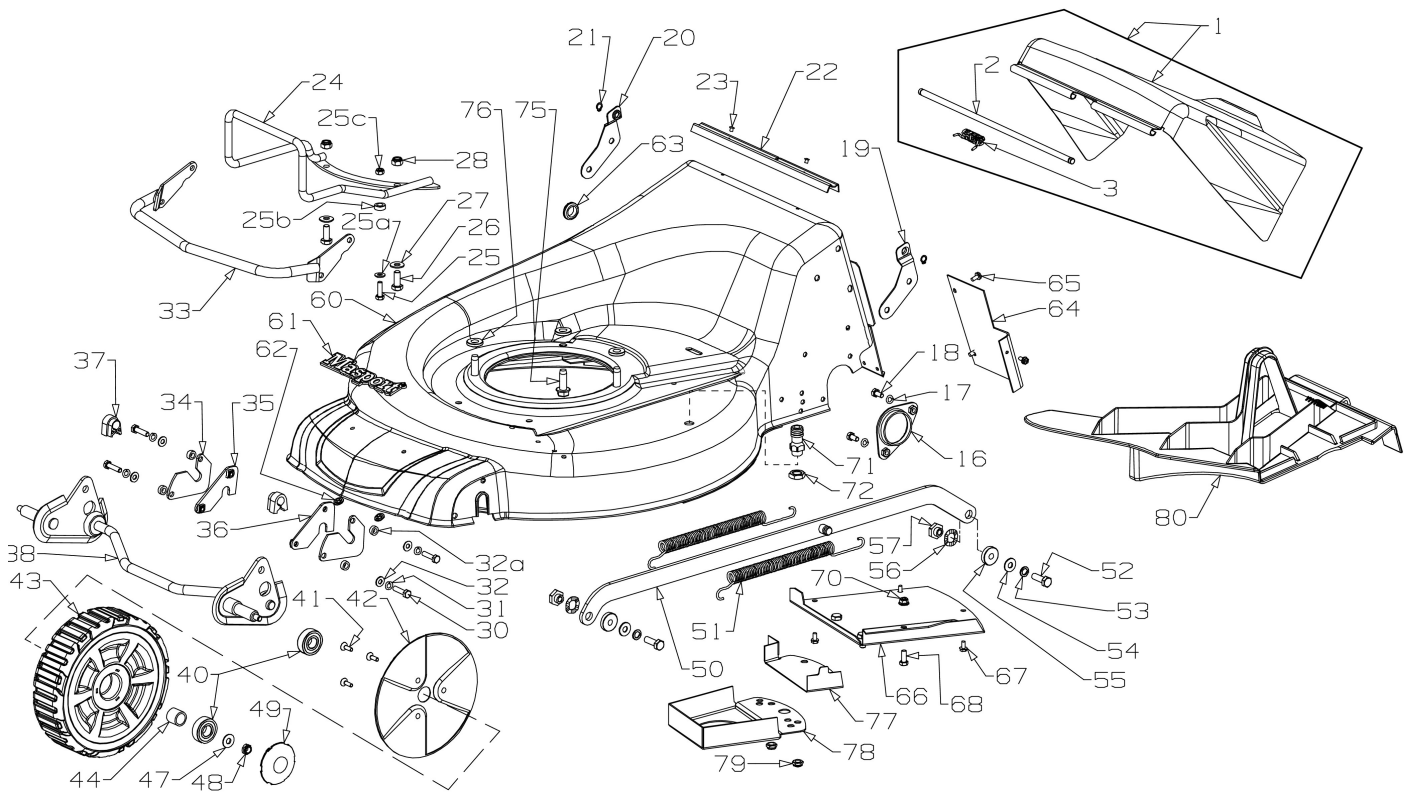
Illustration Handel

No.	Qty	Code	Description	Notes
1		MA-764088	HANDLE & SLEEVE CONT OPCSFTBLK	
1a	1	MA-764088	HANDLE & SLEEVE CONT OPCSFTBLK	
2	1	MA-974365	BAIL ARM ASSY,OPC FLT CONT RED	
2a	1	MA-574676	CABLE-ENGINE OPC,PUSH ON 540 C	
3	1	MA-764336	BAIL ARM ASSY,SP RH CONTR	
3a	2	MA-500848	WASHER	
3b	2	MA-502115	SCREW,SET M 5X 10 BTN/HD ZP	
3c	1	MA-564339	CABLE-CLUTCH,THUMB WHEEL G/BOX	
3d	1	MA-502181	SCREW,PAN M 6X 50 POZ ZP	
3e	1	MA-501764	NUT, M 6 HEX NYLOC X 6THKZP	
3f	1	MA-502237	BOLT ,HEX FL HEAD SHOLDR M5 ZP	
3g	1	MA-502238	NUT, M 5 HEX NYLOC X 5THKZP	
4/4a	1	MA-583460	CONTROL-THROTTLE,-VE L/H CHT	
4b	1	MA-502198	SCREW,PAN M 6X 60 POZ ZP	
4c	1	MA-501764	NUT, M 6 HEX NYLOC X 6THKZP	
5a	1	MA-765392	CABLE-SPV CON/ADJ & LEVER ASSY	
5	1	MA-574272	CONTROL-SPEED X 3 SP UPT HNDL	
5a	1	MA-565392	CABLE	
5b	1	MA-502198	SCREW,PAN M 6X 60 POZ ZP	
5c	1	MA-501764	NUT, M 6 HEX NYLOC X 6THKZP	
6	1	MA-782546	COMFORT START KIT SCR-45MM MSV	
6a	1	MA-503558	SCREW,SET M 6X 45 ZP	
6b	1	MA-501764	NUT, M 6 HEX NYLOC X 6THKZP	
7	2	MA-574230	KNOB-PLASTIC,M8 INSERT	
7a	2	MA-502177	BOLT ,CAR M 8X 75 ZP	
8	2	MA-574128	BRACE-HANDLE BRKT ADJ, CON BLK	
9	1	MA-964082	BRACKET-HANDLE ADJUSTBL,RH BLK	
10	2	MA-974129	HANDLE-LOWER,STUB S21 STL BLK	

Illustration Handel

No.	Qty	Code	Description	Notes
10a	2	MA-572270	PLUG-25.4MM BLACK PLASTIC	
11	2	MA-501598	SCREW,SET M 8X 25	HEX ZP
12	2	MA-501602	NUT, M 8	HEX ZP
13	2	MA-501606	WASHER,FLT 8 X 19 X1.6	ZP
14	2	MA-501793	NUT, M 8	HEX NYLOC X 8THKZP
15	4	MA-501685	SCREW,SET M 8X 30	HEX ZP
16	4	MA-501606	WASHER,FLT 8 X 19 X1.6	ZP
17	4	MA-574134	SPACER-PULLEY,8.5 X 19 X 4	
18	1	MA-574140	BRACKET-CATCH MT,RH CONT ST	ZP
19	1	MA-574139	BRACKET-CATCH MT,LH CONT ST	ZP
20	4	MA-501702	SCREW,SET M 6X 16	HEX ZP
21	4	MA-501703	WASHER,FLT 6 X 14 X1.2	ZP
22	4	MA-503973	NUT, M 6	HEX NYLOC FLANGEZP
23	2	MA-501606	WASHER,FLT 8 X 19 X1.6	ZP
24	4	MA-501793	NUT, M 8	HEX NYLOC X 8THKZP
25	1	MA-964083	BRACKET-HANDLE ADJUSTBL,LH BLK	
26	2	MA-572447	RETAINER-CONTROL CABLE-CNTRCTR	
27	2	MA-501606	WASHER,FLT 8 X 19 X1.6	ZP

Illustration Deck



S21SQ-XFW-TUN-SPV-DIS-TH-CON-Ox8-WP-MUL-FC-964929

Illustration Deck

No.	Qty	Code	Description	Notes
1	1	MA-764454	FLAP ASSY-STEEL,CONTRACTR BLK	
2	1	MA-764480	WIRE-FLAP PIVOT 325 X 8 CCL ZP	
3	1	MA-579213	SPRING-FLAP,19 STL	ZP
16	2	MA-581178	RETAINER-AXLE,REAR 600SP ZP	
17	4	MA-500201	WASHER	
18	4	MA-501959	SET SCREW	
19	1	MA-579209	BRACKET-FLAP LH 19	ZP
20	1	MA-579210	BRACKET-FLAP RH 19	ZP
21	2	MA-502219	CIRCLIP, 08 EXT DIN 471	
22	1	MA-579211	SEAL-FLAP,DUST PLASTIC 19	
23	2	MA-581369	RIVET-POP 4.0X3.2 73SS5-2 (8)	
24	1	MA-974518	GUARD-BUMPER,ASSY ENG CONT BLK	
25	1	MA-501600	SCREW,SET M 6X 20	HEX ZP
25a	1	MA-501703	WASHER,FLT 6 X 14 X1.2	ZP
25b	1	MA-569334	SPACER-WEAR PLATE 19 6MM ZP	
25c	1	MA-501764	NUT, M 6 HEX NYLOC X 6THKZP	
26	2	MA-502106	SCREW,SET M 8X 16	HEX ZP
27	2	MA-501606	WASHER,FLT 8 X 19 X1.6	ZP
28	2	MA-501793	NUT, M 8 HEX NYLOC X 8THKZP	
30	4	MA-501963	SCREW,SET M 6X 25	HEX ZP
31	4	MA-500201	WASHER	
32	4	MA-501703	WASHER,FLT 6 X 14 X1.2	ZP
32a	4	MA-565269	SPACER-AXLE CONTR 5X7X12 ZP	
33	1	MA-974110	GUARD-BUMPER,ASSY ST CONTR BLK	
34	2	MA-574120	PLATE-RETAINER,AXLE F INNER ZP	
35	1	MA-574122	PLATE-RETAINER,AXLE FRNT RH ZP	
36	1	MA-574121	PLATE-RETAINER,AXLE FRNT LH ZP	
37	2	MA-580030	AXLE BUSH	
38	1	MA-565150	AXLE ASSY-FRONT,CONTR 21LC ZP	

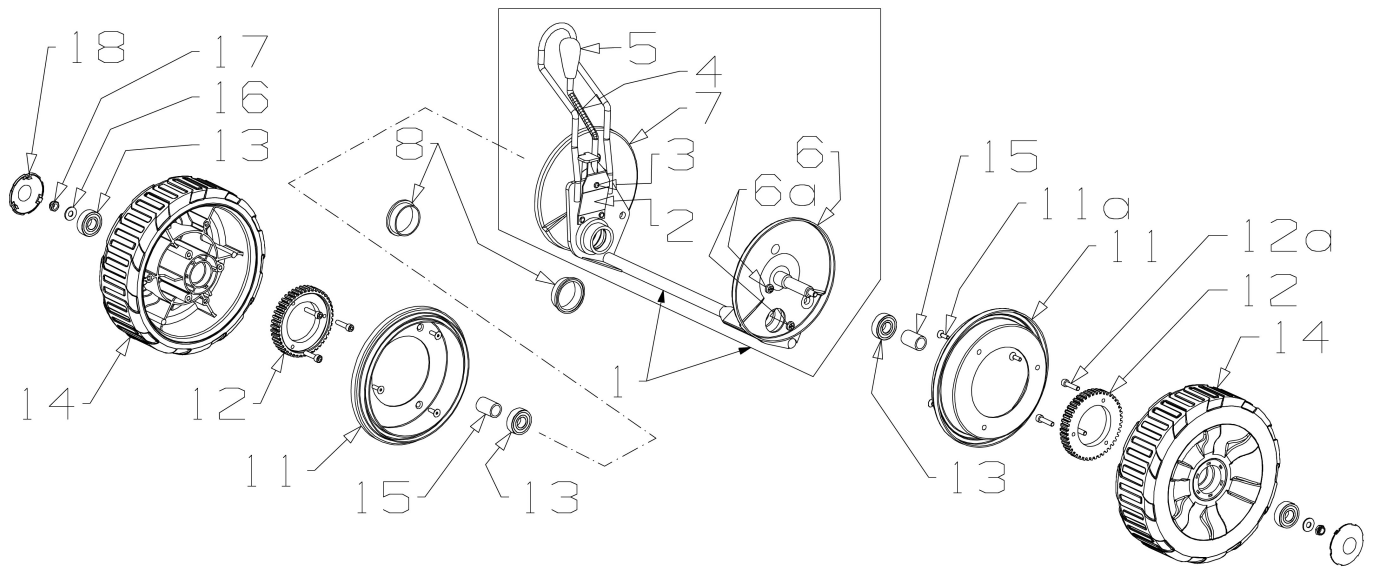
Illustration Deck

No.	Qty	Code	Description	Notes
			Note, 565150 Axle Assembly, Front	
			was introduced from S/Number 8250000	
			To supersede to this new axle, order:	
			765150 Axle Assy- Front Contr Kit 21" LC	
			Kit contains items 32a, 37, 38, 50 & instructions	
40	4	MA-567564	BRG,BAL 15X35X11	
41	6	MA-502267	SCREW,CSK M 5X 12 ALLEN	
42	2	MA-574426	COVER-INNER, WHEEL FRNT CNTR	
43	2	MA-764670	WHEEL ASSY-200X58MM CONTRTR ST	
44	2	MA-564039	SPACER-WHEEL OD19 L18 ID16 ZP	
47	2	MA-501606	WASHER,FLT 8 X 19 X1.6 ZP	
48	2	MA-503831	NUT, M 8 HEX NYLOC X 6THKZP	
49	2	MA-567637	HUB CAP CONTRACTOR BLK	
50	1	MA-565153	ROD-CONNECTING, 21 LC CNTR ZP	
			Serial Numbers 8136449 ~ 8245295 used 574105	
50	1	MA-574105	Rod- Connecting, 21" LC Contr	
51	2	MA-569035	SPRING-COUNTER BALANCE	
52	2	MA-501598	SCREW,SET M 8X 25 HEX ZP	
53	2	MA-503747	WASHER,SPG 8 ZP	
54	2	MA-501606	WASHER,FLT 8 X 19 X1.6 ZP	
55	2	MA-583448	SPACER	
56	2	MA-580693	WASHER,WAVY 13.4 X24.2 X.51 TP	
57	2	MA-574208	NUT-PIVOT, CON-ROD CONTRTR ZP	
60	1	MA-774277	HSG ASSY-STLT21XFQ FS SP MVPR NLA	
61	1	MA-581240	NAMEPLATE, MASPORT BLK/WHITE	
62	2	MA-503150	CLIP-STARLOCK,5 DIA	
63	1	MA-502179	GROMMET-CLTCH CBL 20 X 16 X 6	

Illustration Deck

No.	Qty	Code	Description	Notes
64	1	MA-574249	TUNNEL-GBOX CVR 21STL DSG BLK	
65	3	MA-503630	SCREW	
66	1	MA-964018	COVER-BELT,21 STL SYNCRO BLK	
67	3	MA-503630	SCREW	
68	1	MA-501702	SCREW,SET M 6X 16 HEX ZP	
70	1	MA-503973	NUT, M 6 HEX NYLOC FLANGEZP	
71	1	MA-503783	CYCLOWASH-FITTING	
72	1	MA-596547	NUT	
75	3	MA-580453	SCREW	
76	3	MA-503419	WASHER,FLAT 10 X 23 X 3	
77	1	MA-567413	COVER-BELT,SPV EXTN SYNCRO BLK	
78	1	MA-567412	COVER-BELT,SPV 21 SYNCRO BLK	
79	2	MA-503831	NUT, M 8 HEX NYLOC X 6THKZP	
80	1	MA-773389	INSERT-MULCHING,21REAR FLAPST	

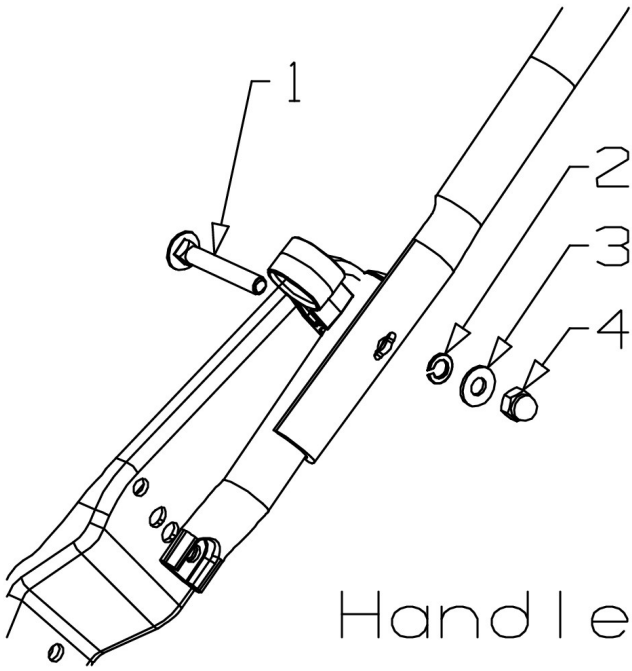
Illustration Rear Axel



565267 - 574235 - 567559 - N - N - 964929

Illustration Rear Axel

No.	Qty	Code	Description	Notes
1	1	MA-765267	AXLE ASSY-REAR SP,CONTR LC	
2	1	MA-580649	SPRING - LEAF	
3	3	MA-503373	RIVET-FLATHEAD 3/16*27/64	
4	1	MA-574235	ROD-HEIGHT SELECT LC CONTR ZP	
5	1	MA-581729	KNOB-HEIGHT LEVER,ADJUST MSV	
6	1	MA-565262	COVER DUST LH - CONTRACTOR V2	
6a	4	MA-503591	SCREW,PAN M 6X 12 POZ ZP	
7	1	MA-565263	COVER DUST RH - CONTRACTOR V2	
8	2	MA-580091	BUSH REAR AXLE	
11	2	MA-567612	SEAL-WHEEL, CONTRACTOR BLK	
11a	6	MA-502267	SCREW,CSK M 5X 12 ALLEN	
12	2	MA-571272	GEAR-DRIVING,CONTR 45 TEETH ZP	
12a	6	MA-503962	SCREW,CAP M 6X 25 ALLEN	
13	4	MA-567564	BRG,BAL 15X35X11	
14	2	MA-767559	WHEEL ASSY-235X75MM CONTRTR AL	
15	2	MA-567639	SPACER-WHEEL OD20 L30 ID15 ZP	
16	2	MA-501606	WASHER,FLT 8 X 19 X1.6 ZP	
17	2	MA-503831	NUT, M 8 HEX NYLOC X 6THKZP	
18	2	MA-567637	HUB CAP CONTRACTOR BLK	

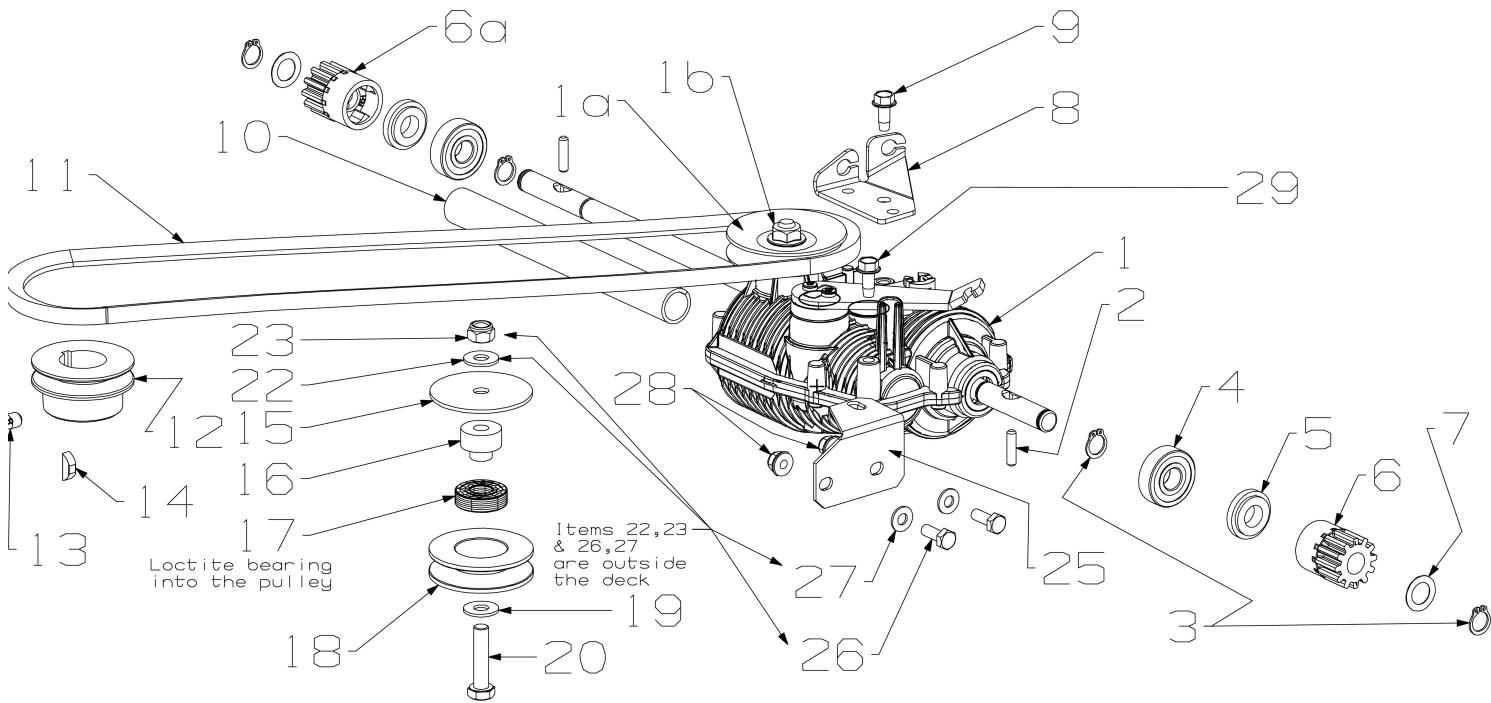


Handle Knob Replacement

Illustration Customer Option

No.	Qty	Code	Description	Notes
1	2	MA-502274	BOLT ,CAR M 8X 55	ZP
2	2	MA-503747	WASHER,SPG 8	ZP
3	3	MA-501606	WASHER,FLT 8 X 19 X1.6	ZP
4	2	MA-503526	NUT, M 8 HEX DOME	CP

Illustration Gearbox



574787-564358-574237-N-N-567557-964961

Illustration Gearbox

No.	Qty	Code	Description	Notes
1	1	MA-774787	GEARBOX ASSY-3SPD MG512 PIN21	
1a	2	MA-565391	**Pulley-(Half) G/Box,GT Part # 33136	
1b	1	MA-502310	**Nut, Locking GT Part # 42811	
2	2	MA-574788	PIN-DRIVE, NON-BROACH 3SP GBOX	
3	4	MA-503759	CIRCLIP, 12 EXT DIN 471	
4	2	MA-501213	BRG,BAL 12X32X10	
5	2	MA-581093	CAP 900SP & 950SP	
6	1	MA-569178	PINION-L/H, 12 TEETH	
6a	1	MA-569179	PINION-R/H, 12 TEETH	
7	2	MA-503102	WASHER,FLT 12 X 20 X0.4 TP	
8	1	MA-564249	BRACKET-CABLE MOUNT,CONTRTR ZP	
9	1	MA-501599	SCREW	
10	1	MA-574319	SLEEVE-REAR AXLE 3SPEED SP	
11	1	MA-564358	BELT-V EX-PWRV10X875 GAT NOTCH	
12	1	MA-574237	PULLEY-ENG, 25BX55DX 28H BLK	
13	1	MA-503386	SCREW,GRB M 8X 8 BLK	
14	1	MA-503363	KEY-W/RUFF 5/8 X 3/16 X 1/4	
15	1	MA-502290	WASHER,FLT 8 X 55 X2.0 ZP	
16	1	MA-574273	SPACER-IDLER, SPV M8 ZP	
17	1	MA-503901	BRG,BAL 12X28X8	
18	1	MA-573383	PULLEY-V,IDLER SPV ZP	
19	1	MA-501606	WASHER,FLT 8 X 19 X1.6 ZP	
20	1	MA-501716	SCREW,SET M 8X 35HT HEX ZP	
22	1	MA-501606	WASHER,FLT 8 X 19 X1.6 ZP	
23	1	MA-501793	NUT, M 8 HEX NYLOC X 8THKZP	
25	1	MA-567557	BRACKET-G/BOX MOUNT,CONTRTR ZP	
26	2	MA-501702	SCREW,SET M 6X 16 HEX ZP	
27	2	MA-501703	WASHER,FLT 6 X 14 X1.2 ZP	
28	2	MA-503973	NUT, M 6 HEX NYLOC FLANGEZP	

Illustration Gearbox

No.	Qty	Code	Description	Notes
29	1	MA-501599	SCREW	