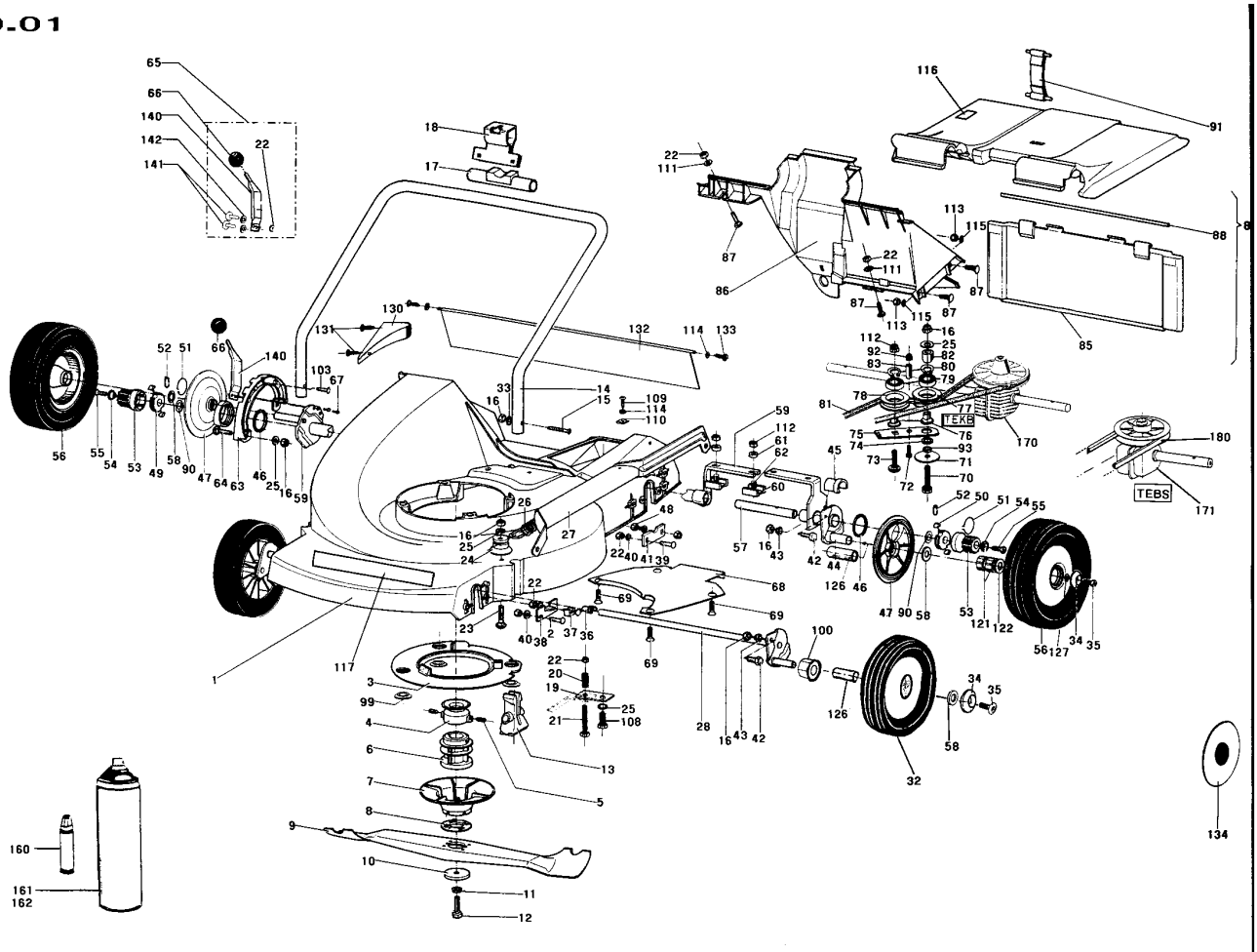


Number	Part Number	Name	Quantity
1	24957	CUTT.DECK 51 WHITE	1,000
2	71060	BOLT TRCC 6X25	1,000
3	24617	THERMAL PROTECTION	1,000
4	24601	PULLEY 63 NG51	1,000
5	5353	SCREW	1,000
6	23616	COUPLING 25 MM	1,000
7	24618	COUPLING DISK	1,000
8	24006	SHEAR WASHER	1,000
10	7341	FLAT WASHER 10,3X49	1,000
11	71052	SPRING WASHER,DIN 1	1,000
12	7342	BOLT 3/8 - 24	1,000
13	24611	LOWER INSULATION	1,000
14	24010	HANDLEBAR INF.	1,000
15	71056	SCREW FHC/90 M8X40	1,000
16	71074	NUT HM8	1,000
17	24612	CENTRAL ISOLATION	1,000
18	24016	HANDLEBAR LOCK	1,000
19	24030	SPRING STOP	1,000
20	21308	SPRING	1,000
21	20686	HEXAG. SCREW 6X55	1,000
22	71201	NUT M6	1,000
23	71017	SCREW 8X40	1,000
24	23623	SPRING SHAFT	1,000
25	7335	WASHER	1,000
26	24632	46CUT.HEIGHT SPRING	1,000
27	24320	CONNECTING ROD KIT	1,000
28	24323	CUTTING H FRONT	1,000
32	24926	WHEEL 200 BALL B.	1,000
33	7035	FLAT WASHER	1,000
34	24087	PROTECTION WASHER	1,000
35	71072	BOLT CHC M6X10	1,000
36	20539	FRONT RING	1,000
37	24634	DAMPING ELEMENT	1,000
38	24024	BASE SHEET FRONT	1,000
39	5496	SCREW 6X20	1,000
40	2235	WASHER A6.4	1,000
41	24038	REAR SHEET	1,000
42	71071	HEXAG. SCREW 8X20	1,000
43	24052	KNUCKLE RING	1,000
44	24274	CUT.HEIGHT REAR L51	1,000
45	24633	GUIDE RING	1,000

Number	Part Number	Name	Quantity
46	24692	SEALING WASHER	1,000
47	43187	REAR WHEEL COVER TR	1,000
48	20507	BOLT HM 6X20	1,000
49	5733	FREE WHEEL RIGHT	1,000
50	5734	FREE WHEEL LEFT	1,000
51	5329	CLICK SPRING	1,000
52	21609	PIN 5X22	1,000
53	5323	GEAR	1,000
54	24067	WASHER	1,000
55	71021	SCREW FHC/90 M6X12	1,000
56	24411	REAR WHEEL 51 KIT	1,000
57	24135	SLOW SHAFT NG51 RD	1,000
58	9034	NYLON WASHER	1,000
59	24273	CUT.HEIGHT REAR R51	1,000
60	24022	CLAMPING BOW	1,000
61	24083	CORNER RING	1,000
62	71122	SCREW 8X20	1,000
63	42067	INDEXED DISK 51	1,000
64	71070	SCREW 8X30	1,000
65	24439	LEVER + SCREW	1,000
66	21177	BALL M8	1,000
67	20548	NAIL RIVET 6X15	1,000
68	24002	BELT COVER INF.	1,000
69	71097	EJOT SCR.PT A 80X20	1,000
70	71223	SCREW M8X50	1,000
71	24058	SUPPORT VARIATOR	1,000
72	71135	SCREW 5X25	1,000
73	5347	SCREW 8X25	1,000
74	24046	VARIATOR PIVOT	1,000
75	24045	PLATE SUPPORT	1,000
76	24836	RING	1,000
77	23632	PULLEY	1,000
78	24659	GROOVE PULLEY	1,000
79	9022	BALL BEARING 6002	1,000
80	21256	CIRCLIP	1,000
81	24655	BELT 51	1,000
82	24048	VARIATOR SPACER	1,000
83	24846	SPACER 15X8X5,2	1,000
84	42283	DEFLECTOR CPL GREEN	1,000
85	24605	RUBBER FLAPPER	1,000
86	24924	COVER WHITE 51	1,000

Number	Part Number	Name	Quantity
87	71069	BOLT DIN 603	1,000
88	24003	DEFLEKTOR ROD	1,000
90	71016	WASHER 16X22X1	1,000
91	24606	STRAP NG51 + SHAFT	1,000
92	37561	NUT	1,000
93	24085	SPACER PIVOT	1,000
99	24005	ENGINE WASHER	1,000
100	7046	SLEEVE	1,000
103	71078	SCREW TF 5X16	1,000
108	5083	M8X20 TAPTITE SCREW	1,000
109	21437	SCREW	1,000
110	21436	CLIPS NUT	1,000
111	71096	WASHER B6,4	1,000
112	71076	NUT VERBUS HM8	1,000
113	1557	NUT HM6	1,000
114	7094	FLAT WASHER	1,000
115	71049	SPRING WASHER,DIN 1	1,000
116	39049	STICKER	1,000
117	12048	STICKER 26*4	1,000
121	5015	STUDED BUSH	1,000
122	21655	IMPERVIOUSNESS RING	1,000
126	5019	GUIDE RING	1,000
127	21270	WASHER 6,4	1,000
130	24602	BASE PLATE BLACK	1,000
131	71206	BOLT EJ.PT KA50X16	1,000
132	24781	NG51 FLAP	1,000
133	6187	SCREW	1,000
134	24927	WHEEL FLANGE 200	1,000
140	42270	LEVER CUTTING HEIGH	1,000
141	71255	SCREW TH M6X14	1,000
142	71075	WASHER	1,000
160	25480	GREEN COLOUR STICK	1,000
161	25965	COLOR SPRAY GREEN	1,000
162	25966	COLOR SPRAY WHITE	1,000
170	42240	OIL BATH VAR. REDUC	1,000
171	24269	OIL BATH RED 1SPEED	1,000
180	24646	BELT 51 STD	1,000

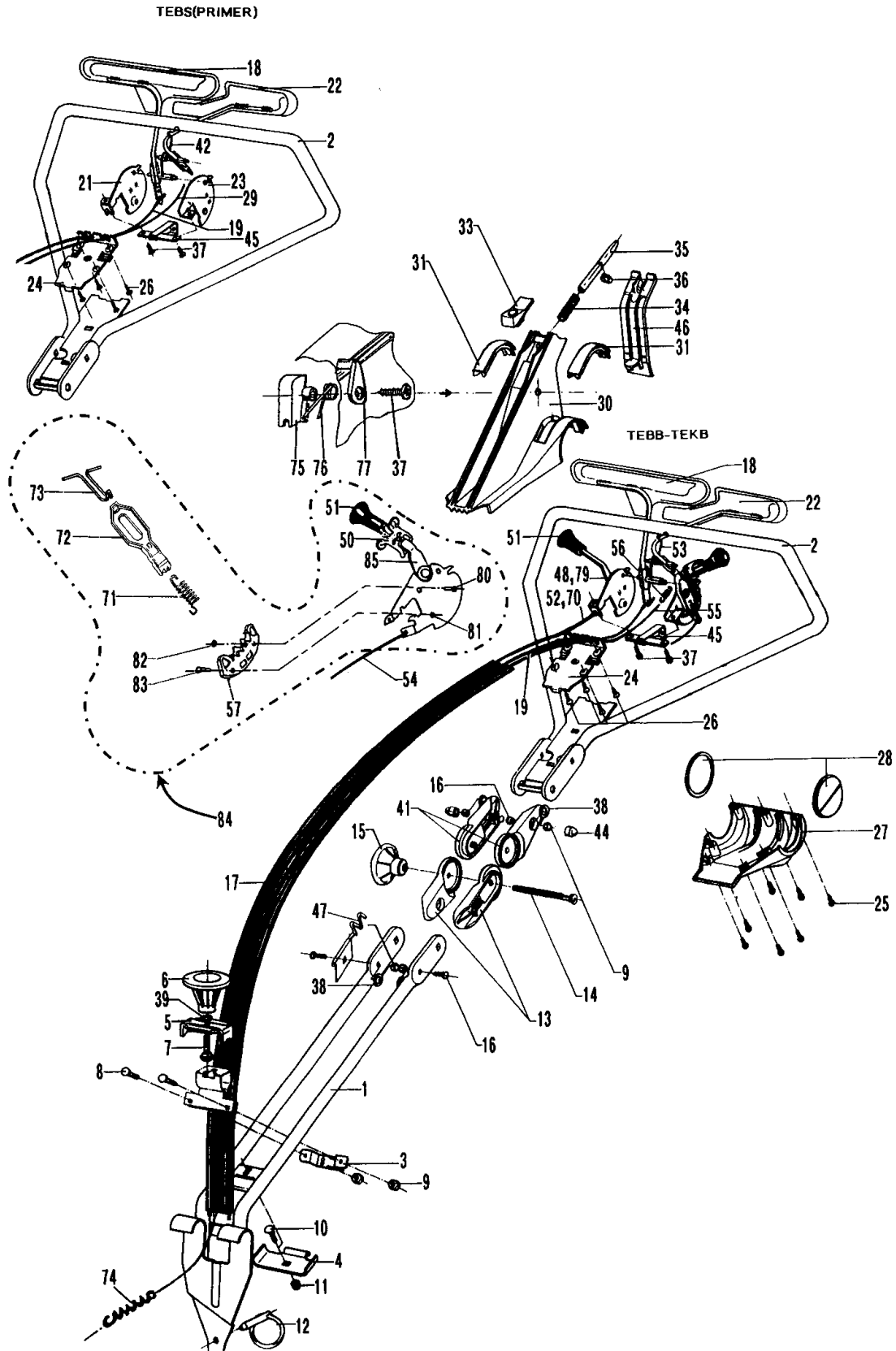
170.01



Number	Part Number	Name	Quantity
1	24311	LOWER HANDLEBAR	1,000
2	23306	UP. HANDL. ASSY PSE	1,000
3	23041	RING	1,000
4	24014	COLLECTOR HOOK	1,000
5	24018	SQUEEZE PLATE	1,000
6	24615	BUTTON (BIG)	1,000
7	71017	SCREW 8X40	1,000
8	5496	SCREW 6X20	1,000
9	71201	NUT M6	1,000
10	2217	BOLT TRCC 8X16	1,000
11	71074	NUT HM8	1,000
12	24704	PIN + CLIP	1,000
13	24614	LOWER LOCKING JOINT	1,000
14	71028	BOLT TRCC 8X110	1,000
15	24610	BUTTON (SMALL)	1,000
16	71060	BOLT TRCC 6X25	1,000
17	23654	REMOTE CTRL SLEEVE	1,000
18	24434	DRIVE EN-/DISENGAGE	1,000
19	24775	CLUTCH CABLE 51RD	1,000
21	24094	TEBS THROTTLE CABLE	1,000
22	24433	BLADE EN-/DISENGAGE	1,000
23	24128	HS MOTOR BRAKE DISK	1,000
24	24050	SLEEVE STOP	1,000
25	71051	BOLT EJ.PT KA40X14	1,000
26	71050	BOLT EJ.PT KA40X14	1,000
27	23651	LOWER HOUSING	1,000
28	23666	CAPSULE	1,000
29	24792	BRAKE CABLE ENGINE	1,000
30	23650	CENTRAL HOUSING	1,000
31	24682	COVER	1,000
33	24690	LOCKING BUTTON	1,000
34	24609	SPRING	1,000
35	24059	BOLT	1,000
36	24684	TRUARC RING	1,000
37	71082	EJOT SCR.PT KA40X12	1,000
38	2235	WASHER A6.4	1,000
39	71343	SPRING WASHER A8	1,000
41	24629	UPPER LOCKING JOINT	1,000
42	24778	SPRING	1,000
44	24628	PROTECTING CAP HM6	1,000
45	24350	LEVER STOP	1,000

Number	Part Number	Name	Quantity
46	23652	CENTR.HOUSING REAR	1,000
47	24670	GUIDE-RECOIL START.	1,000
48	24314	GAZ MODULE KAWA	1,000
50	24700	BUTTON	1,000
51	21177	BALL M8	1,000
52	24757	KAWA.THROTTLE CABLE	1,000
53	24758	LEVER SPRING	1,000
54	24711	CABLE+SLEEVE VARIAT	1,000
55	24821	CABL+SLEEV.BLADE CL	1,000
56	24838	SPRING	1,000
57	24701	INDEXED DISK	1,000
70	24673	THR.CABLE+SLEEVE BS	1,000
71	24703	BACK SPRING	1,000
72	24644	VARIATOR SLIDE	1,000
73	24702	LINKAGE	1,000
74	24686	SPRING	1,000
75	24845	LOCKING ARM	1,000
76	24843	DOUBLE CTRL.SPRING	1,000
77	24844	LOCKING LEVER	1,000
79	24364	GAZ MODULE BRIGGS	1,000
80	71237	SCREW F H M4-8,4.8	1,000
81	21525	NUT HM4	1,000
83	21524	SCREW M8X35	1,000
84	24395	ENGINE SPEED MODUL	1,000
85	24777	BOUTON MANOEUV.VERT	1,000

175.01



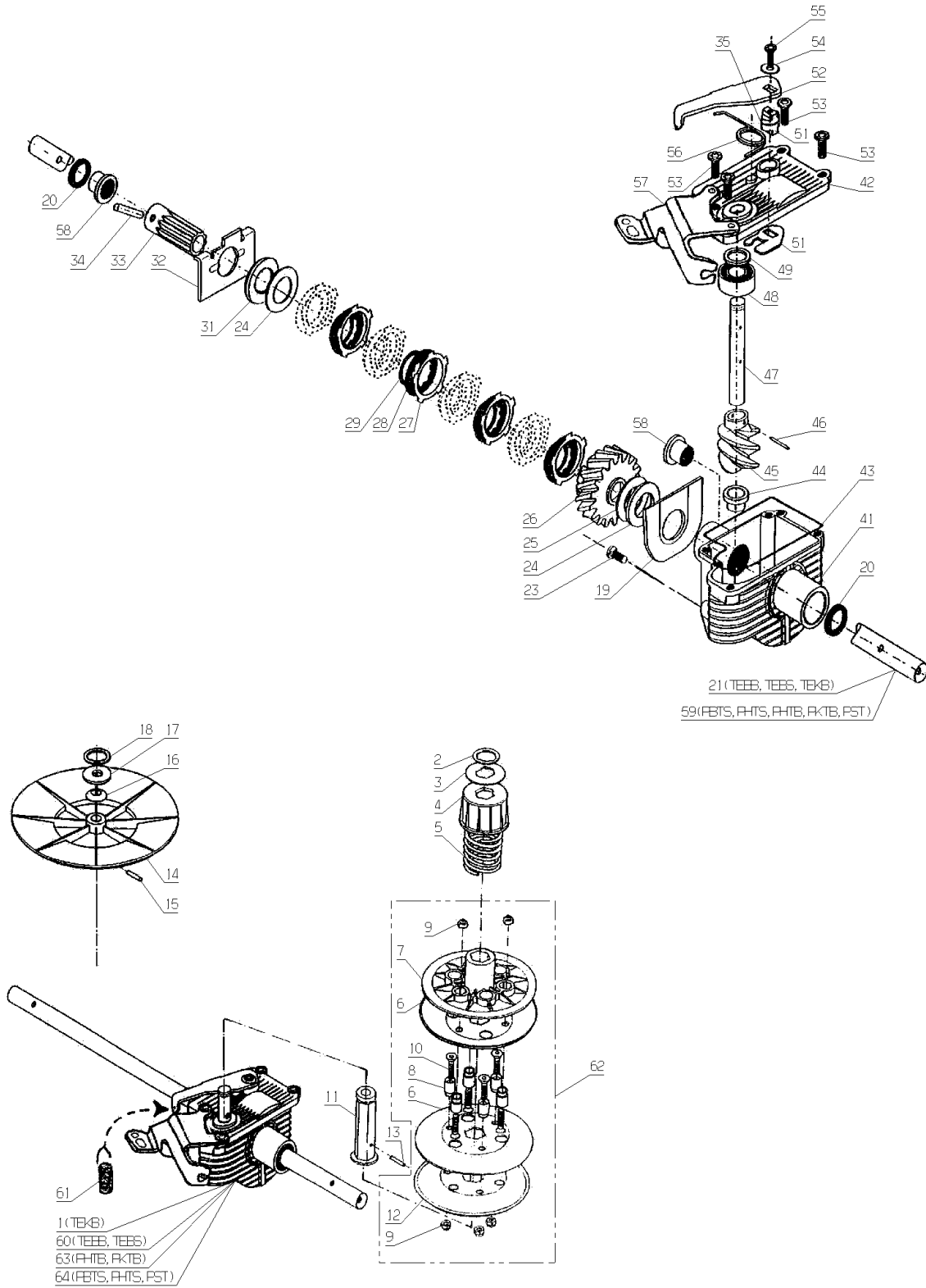
Number	Part Number	Name	Quantity
1	42240	OIL BATH VAR. REDUC	1,000
2	71019	CIRCLIP 16X1	1,000
3	24072	WASHER 32X16,5X1	1,000
4	24649	PULLEY STOP	1,000
5	24651	PULLEY SPRING	1,000
6	24044	1/2 PULLEY FLANGE	1,000
7	24665	1/2 PULLEY	1,000
8	24069	GUIDE STUB	1,000
9	37561	NUT	1,000
10	71022	SCREW FHC/90 M5X20	1,000
11	41823	WASHER+AXLE PUL.CPL	1,000
12	24840	1/2 PULLEY	1,000
13	20556	PIN 3X15	1,000
14	22455	REDUCTION GEAR PULL	1,000
15	71088	PIN 3X22	1,000
16	20561	CURLED WASHER A10	1,000
17	21036	FLAT WASHER 10.5	1,000
18	20559	CIRCLIPS 10	1,000
19	41105	CASING REINFORCEMENT	1,000
20	71219	LIP SEAL 15X21X5	1,000
21	24135	SLOW SHAFT NG51 RD	1,000
23	71211	BOLT EJ-PT 50X16	1,000
24	41102	STRIDDED STOP	1,000
25	71216	STOP WASHER	1,000
26	24776	BELL + WHEEL SET	1,000
27	41097	EXT.CLUTCH PLATE	1,000
28	41096	INT.CLUTCH PLATE	1,000
29	71214	WASHER R9	1,000
31	41095	STOP WASHER	1,000
32	41094	FORK RD	1,000
33	41104	CARRIER	1,000
34	21609	PIN 5X22	1,000
35	71220	O-RING 8,9X1,9	1,000
41	41050	-> 41052 + 42095	1,000
42	41051	REDUCT. GEAR COVER	1,000
43	41110	COVER SEAL	1,000
44	20558	RING C/10 15X10	1,000
45	20555	ENDLESS BOLT	1,000
47	41055	QUICK SHAFT N.M	1,000
48	24642	BEARING	1,000
49	71218	LIP SEAL 10X18X4	1,000



Number	Part Number	Name	Quantity
51	41822	PUSH AXLE (SET)	1,000
52	41059	CONTROL ARM	1,000
53	71244	BOLT EJ-PT 50X20	1,000
54	7094	FLAT WASHER	1,000
55	71213	BOLT M4X10	1,000
56	41060	CLUTCH SPRING	1,000
57	42095	BRACKET	1,000
58	41056	SELF LUBRICATE BUSH	1,000
59	23087	SLOW SHAFT 46 RD	1,000
60	24269	OIL BATH RED 1SPEED	1,000
61	24686	SPRING	1,000
62	24275	VARIATOR PULLEY	1,000
63	23278	DISC.GEARBOX 46 VAR	1,000
64	23279	DISC.GEARBOX46 ST	1,000

VIVA 46/51

180.01

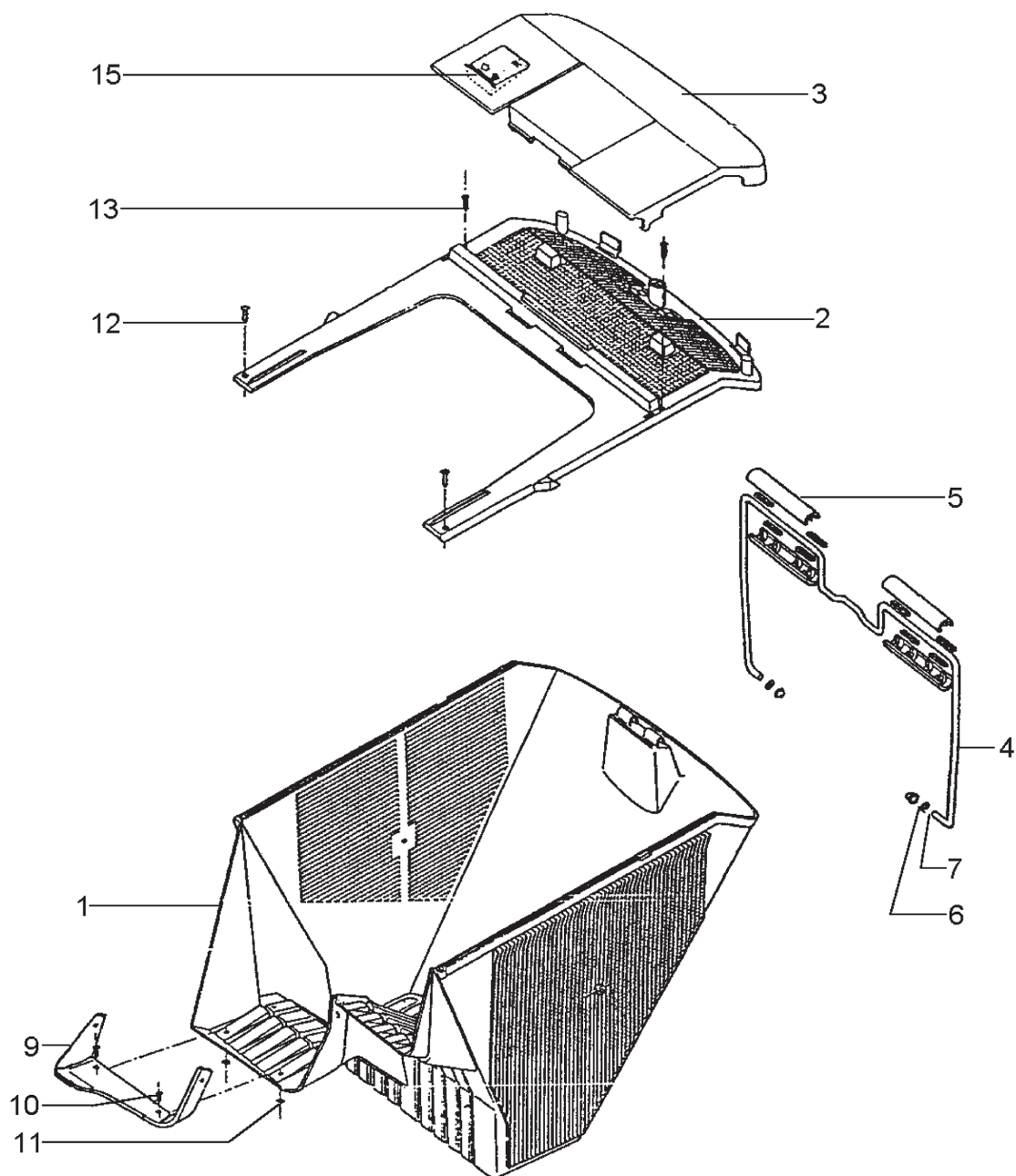


09/2005

Number	Part Number	Name	Quantity
1	TU51E	GRASS COLLECT. 51CM	1,000
2	24929	UPPER PART	1,000
3	24930	DUST COVER GREEN	1,000
4	24905	ARCHED HANDLE 51	1,000
5	24903	1/2 GRIP	1,000
6	71164	STARLOCK TRIM	1,000
7	7335	WASHER	1,000
9	24252	PROTECTION PLATE	1,000
10	21204	RIVET TP 4X7,9	1,000
11	7094	FLAT WASHER	1,000
12	71048	BOLT EJ.PT KA40X10	1,000
13	71050	BOLT EJ.PT KA40X14	1,000
15	23928	INDICATOR FILLING G	1,000

PRO51

185.01



01/2022