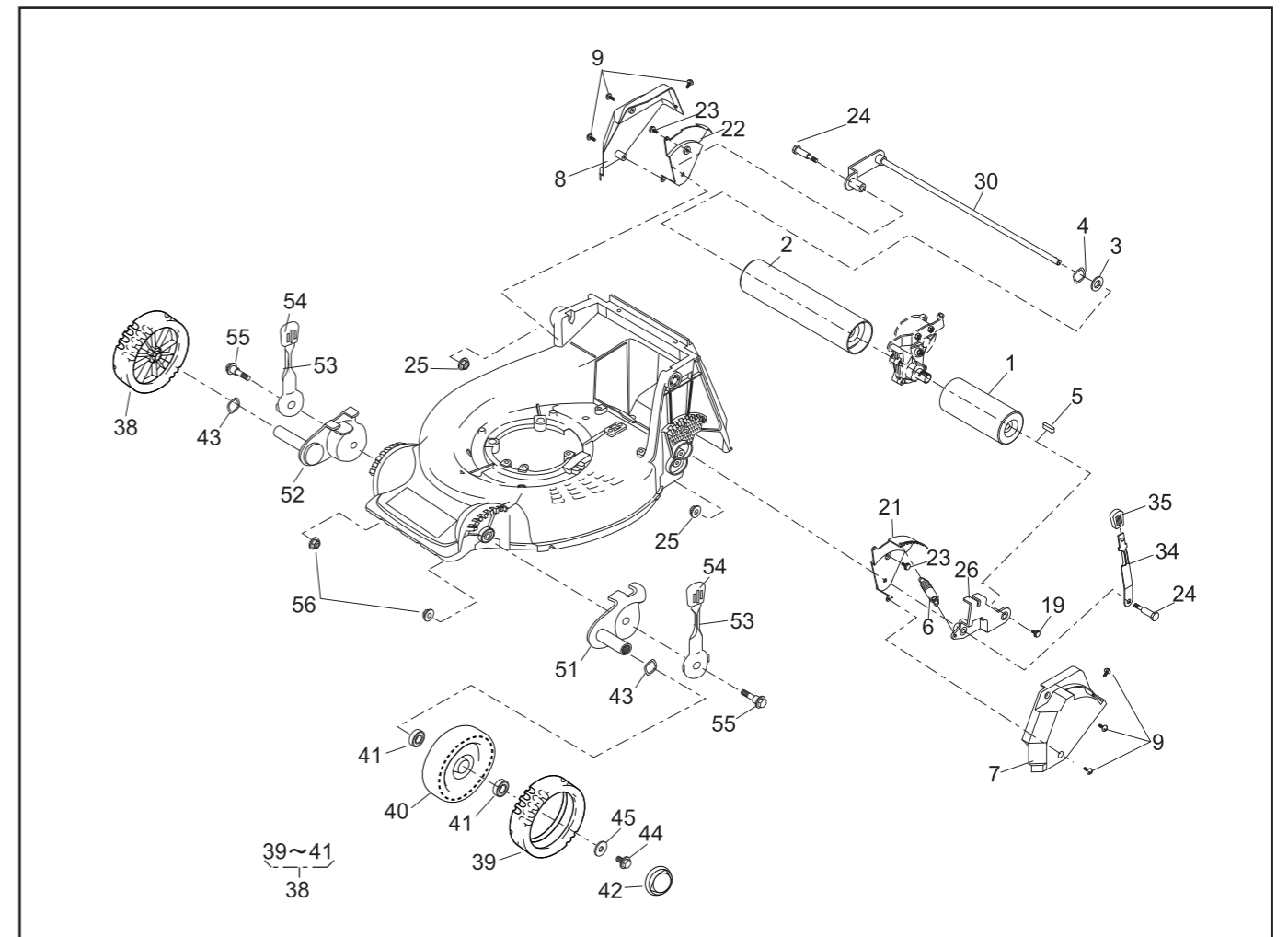


PARTS LIST

46014-371-00

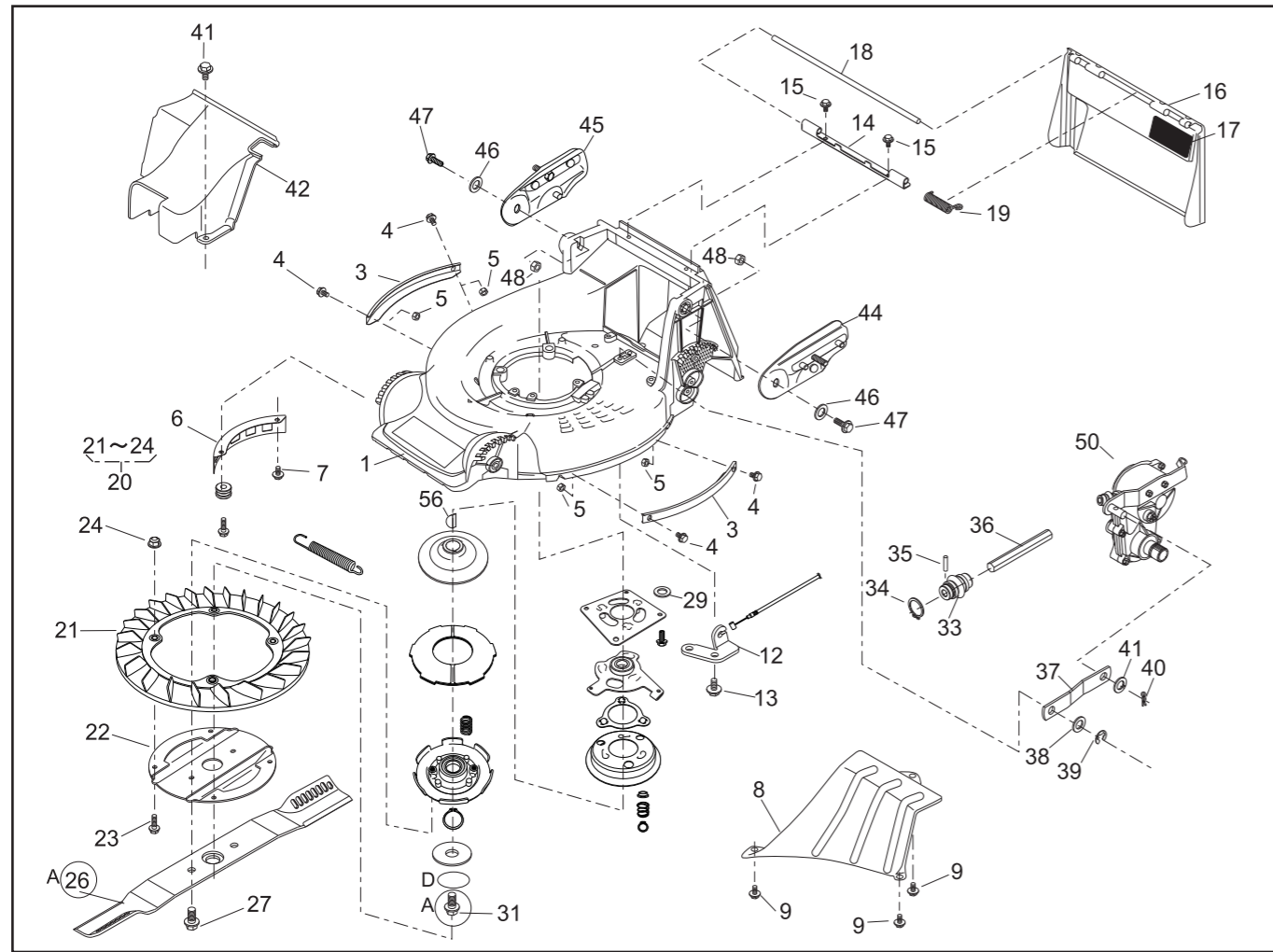
REF. No.	PARTS No.	PARTS NAME	ROLLER		1/2	14. Apr. 2006	REMARKS
			Q'TY INCLUDING	PRICE()			
1	36099 121	ROLLER(L)	1				
2	36099 122	ROLLER(R)	1				
3	61024 118	SPACER	0~2				
4	664V 0016	WAVE SPRING WASHER	0~2				
5	91020 131	KEY	1				
6	68013 265	SPRING	1				
7	36065 404	COVER(L)	1				
8	36065 405	COVER(R)	1				
9	475L 0516	(+)TAPPING SCREW	6				
10							
11							
12							
13							
14							
15							
16							
17							
18							
19	31057 181	HEXAGON BOLT	1				
20							
21	11113 294	STAY(L)	1				
22	11113 295	STAY(R)	1				
23	342L 0612	FLANGE BOLT TAPPING	2				
24	31057 200	HEXAGON BOLT	2				
25	569L 0800	FLANGE NYLON NUT	2				
26	11142 110	ADJUSTER(RL)	1				
27							
28							



PARTS LIST

46014-371-00

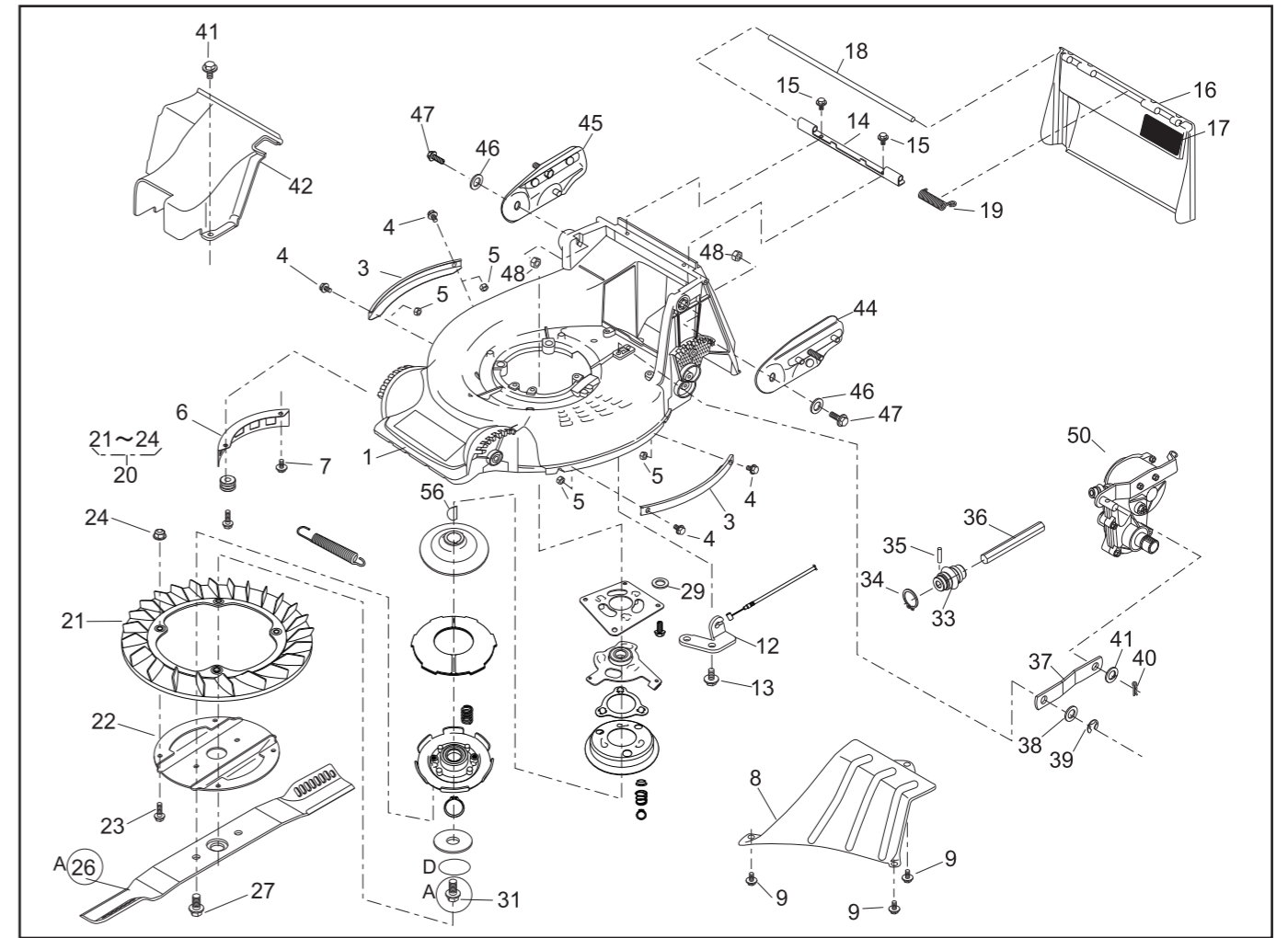
REF. No.	PARTS No.	PARTS NAME	ROLLER		2/2	14. Apr. 2006	REMARKS
			Q'TY INCLUDING	PRICE()			
29							
30	11142 121	ADJUSTER(RR)	1				
31							
32							
33							
34	11150 104 09	ADJUST LEVER(R)	1				
35	36061 121	KNOB	1				
36							
37							
38	71041 103	WHEEL ASSY	2				
39	91086 102	TIRE	2				
40	36107 102	WHEEL	2				
41	932L 0696	BEARING		4			
42	36070 110	CAP	2				
43	664V 0626	WAVE SPRING WASHER	2				
44	31057 181	HEXAGON BOLT	2				
45	68036 101	WASHER	2				
46							
47							
48							
49							
50							
51	11142 112	ADJUSTER(FL)	1				
52	11142 113	ADJUSTER(FR)	1				
53	11150 107 09	ADJUST LEVER(F)	2				
54	36061 121	KNOB	2				
55	31057 260	HEXAGON BOLT	2				
56	569L 0800	FLANGE NYLON NUT	2				



PARTS LIST

P/L No. 46014-376-02

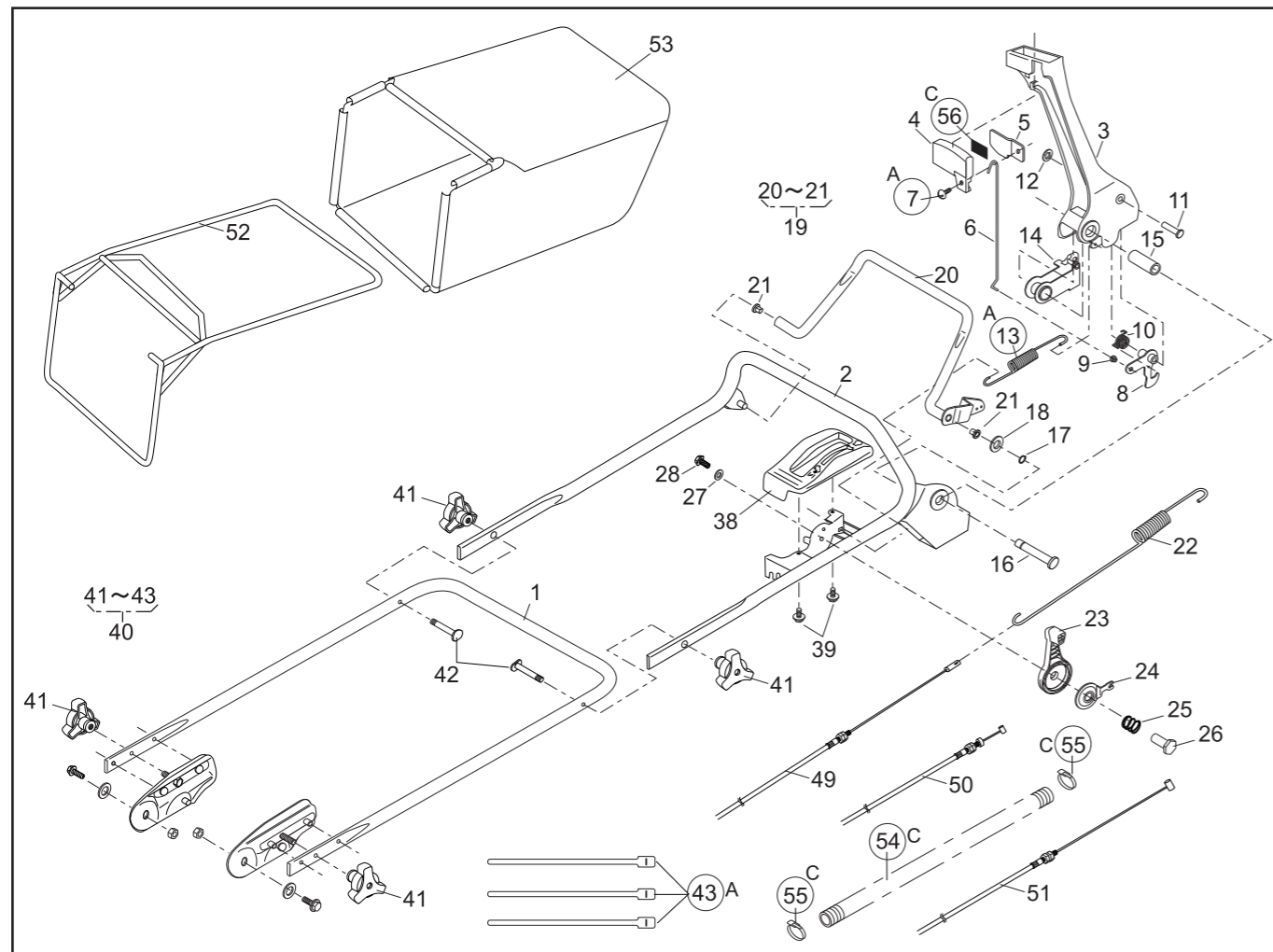
NOTE	REF. No.	PARTS No.	PARTS NAME	GRASS-CUTTING		1/2	Dec. 26. 2006	REMARKS
				Q'TY INCLUDING	PRICE()			
	1	51043 149 42	HOUSING	1				
	2							
	3	51090 128 09	PROTECTOR	2				
	4	335L 0616	FLANGE BOLT	4				
	5	512L 0600	HEXAGON NUT	4				
	6	36065 180	COVER	1				
	7	342L 0612	FLANGE BOLT TAPPING	1				
	8	36065 400	COVER	1				
	9	342L 0612	FLANGE BOLT TAPPING	3				
	10							
	11							
	12	51002 118	WIRE HOLDER	1				
	13	342L 0612	FLANGE BOLT TAPPING	2				
	14	11113 292	STAY	1				
	15	342L 0612	FLANGE BOLT TAPPING	2				
	16	36068 188 46	GUARD	1				
	17	36080 149	RUBBER SHEET	1				
	18	64014 324	SHAFT	1				
	19	68013 336	SPRING	1				
	20	71082 111	FAN ASSY	1				
	21	51125 103	FAN	1				
	22	11102 151	HOLDER	1				
	23	31062 169	PRE-COAT LOCK BOLT	4				
	24	579L 0600	FLANGE NUT	4				
	25							
A	26	91014 190	BLADE	1				
	27	335M 1020	FLANGE BOLT	2				
	28							



PARTS LIST

P/L No. 46014-376-02

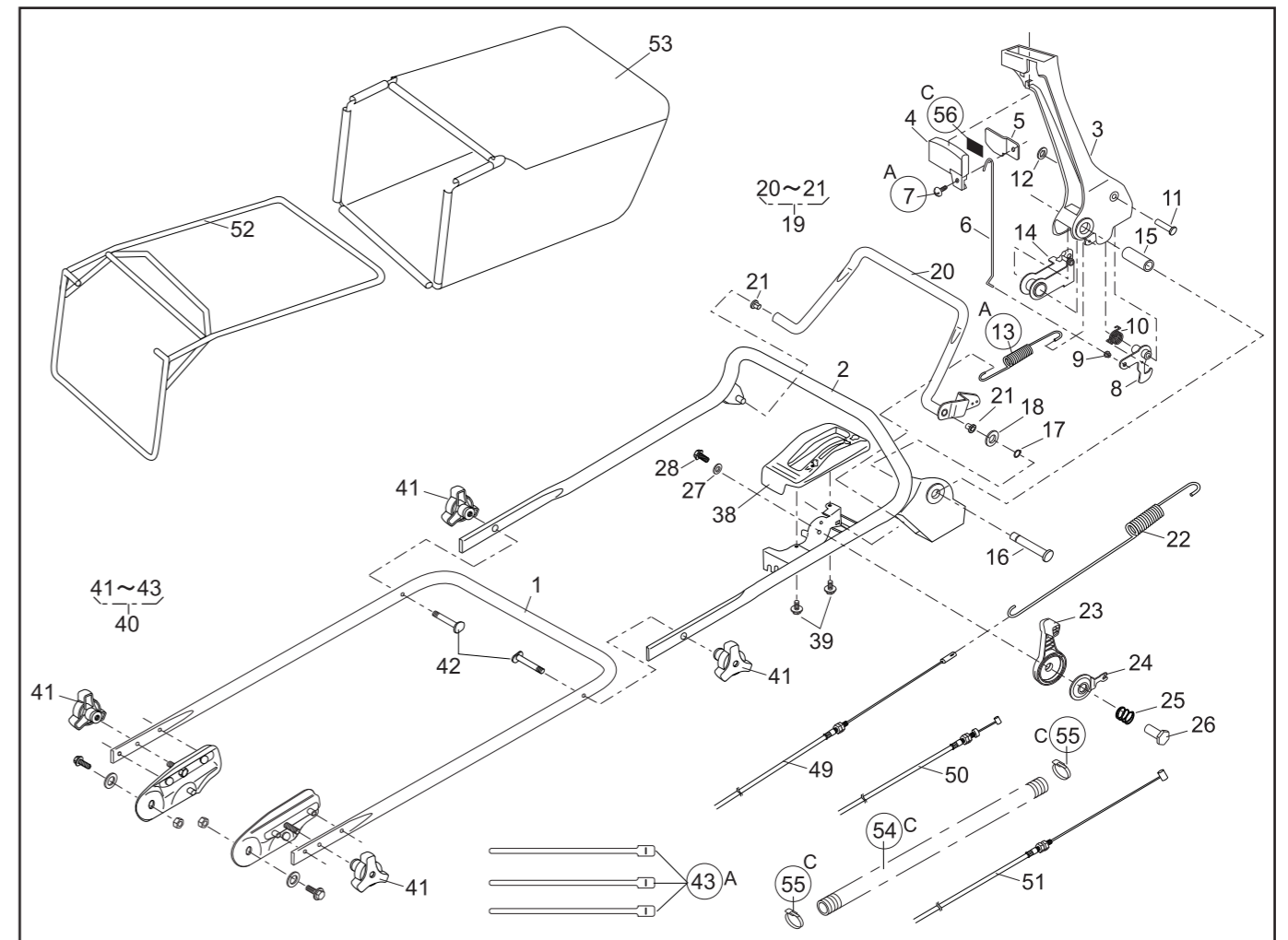
NOTE	REF. No.	PARTS No.	PARTS NAME	GRASS-CUTTING		2/2	Dec. 26. 2006	REMARKS
				Q'TY INCLUDING	PRICE()			
	29	68036 292	WASHER	4				
	30	71067 116	BRAKE ASSY	1				
A	31	31057 272	HEXAGON BOLT	1				
D	32							
	33	91097 101	UNIVERSAL JOINT	1				
	34	812V 2000	C-SNAP RING FOR SHAFT	1				
	35	717B 0418	PARALLEL PIN	1				
	36	64014 372	SHAFT	1				
	37	91049 137	CONNECTOR	1				
	38	68036 280	WASHER	1				
	39	816V 0800	E-SNAP RING	1				
	40	733L 1000	SNAP PIN	1				
	41	68036 280	WASHER	1				
	42	36065 455	COVER	1				
	43	335L 0616	FLANGE BOLT	1				
	44	51116 145	HANDLE BRACKET(L)	1				
	45	51116 146	HANDLE BRACKET(R)	1				
	46	68036 101	WASHER	2				
	47	312M 0830	BOLT	2				
	48	512L 0800	HEXAGON NUT	2				
	49							
	50	71008 369	GEAR CASE ASSY	1				
	51							
	52							
	53							
	54							
	55	122048	ENGINE:KAWASAKI FJ151V-AC50	1				
	56	96007 183	KEY	1				



PARTS LIST

P/L No. 46014-384-02

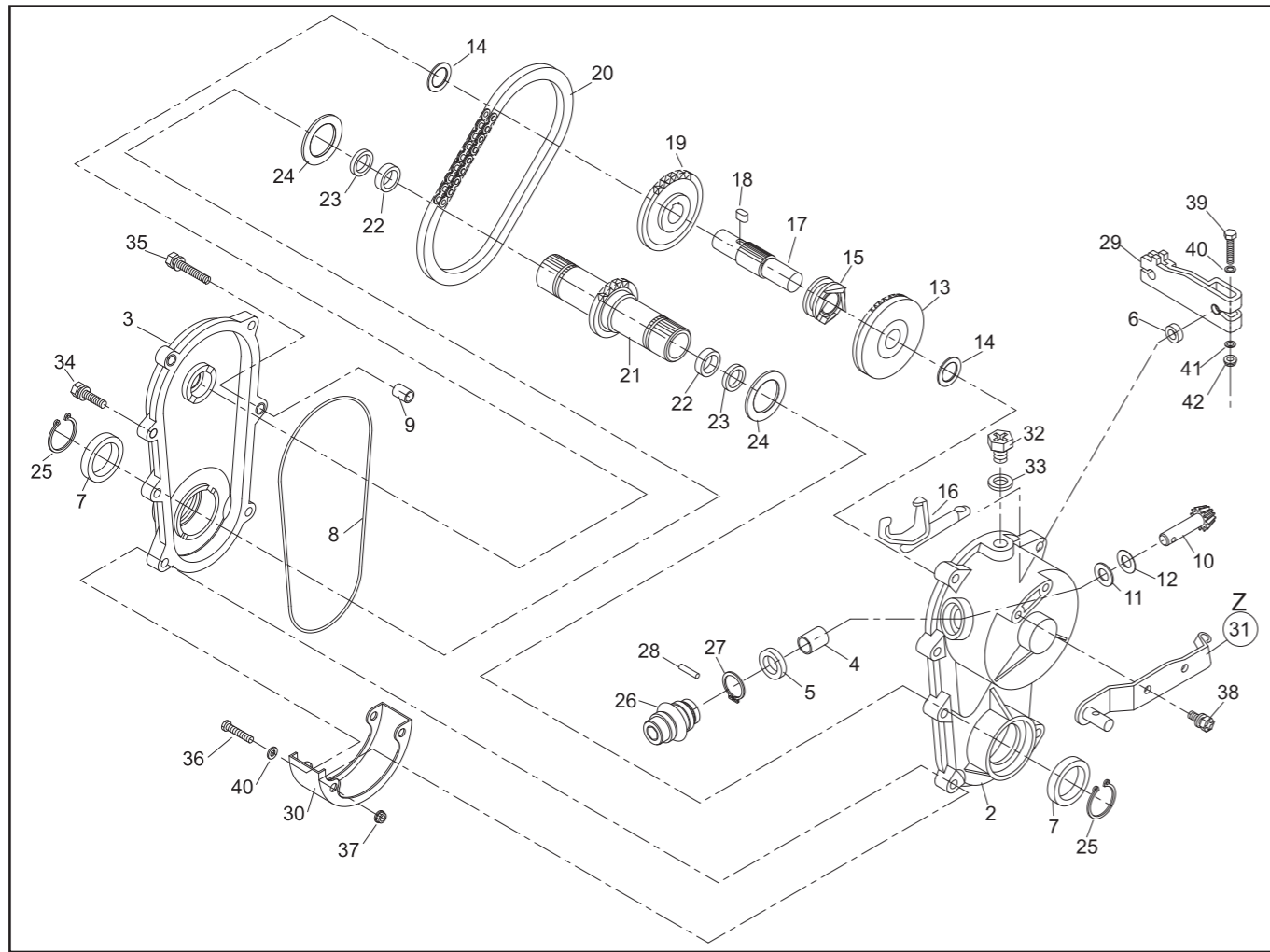
NOTE	REF. No.	PARTS No.	PARTS NAME	HANDLE-ROLLER		1/2	Dec. 26. 2006	REMARKS
				Q'TY INCLUDING	PRICE()			
	1	51027 146	HANDLE	1				
	2	51027 255	HANDLE	1				
	3	11095 172	LEVER(BBC)	1				
	4	36110 102	BUTTON	1				
	5	11049 109	SLIDE PLATE	1				
	6	64014 336	SHAFT	1				
A	7	376L 0612	(+)TAPPING SCREW	1				
	8	71203 135	ARM C.P.	1				
	9	76007 183	BUSH	1				
	10	68013 371	SPRING	1				
	11	31056 127	GIB-HEADED PIN	1				
	12	576V 0600	PUSH NUT	1				
A	13	68013 392	SPRING	1				
	14	11109 111	LINK	1				
	15	61023 190	SLEEVE	1				
	16	64014 337	SHAFT	1				
	17	812V 0800	C-SNAP RING FOR SHAFT	1				
	18	613L 0800	WASHER	1				
	19	71161 114 09	LEVER ASSY	1				
	20		LEVER	1				
	21	76007 131	BUSH	2				
	22	68013 382	SPRING	1				
	23	91010 194	THROTTLE LEVER(FJ151V)	1				
	24	61003 113	THRUST PLATE	1				
	25	68013 356	SPRING	1				
	26	31058 168	NUT	1				
	27	68036 125	WASHER	1				
	28	318L 0612	(+)HEX.BOLT(SW)	1				



PARTS LIST

P/L No. 46014-384-02

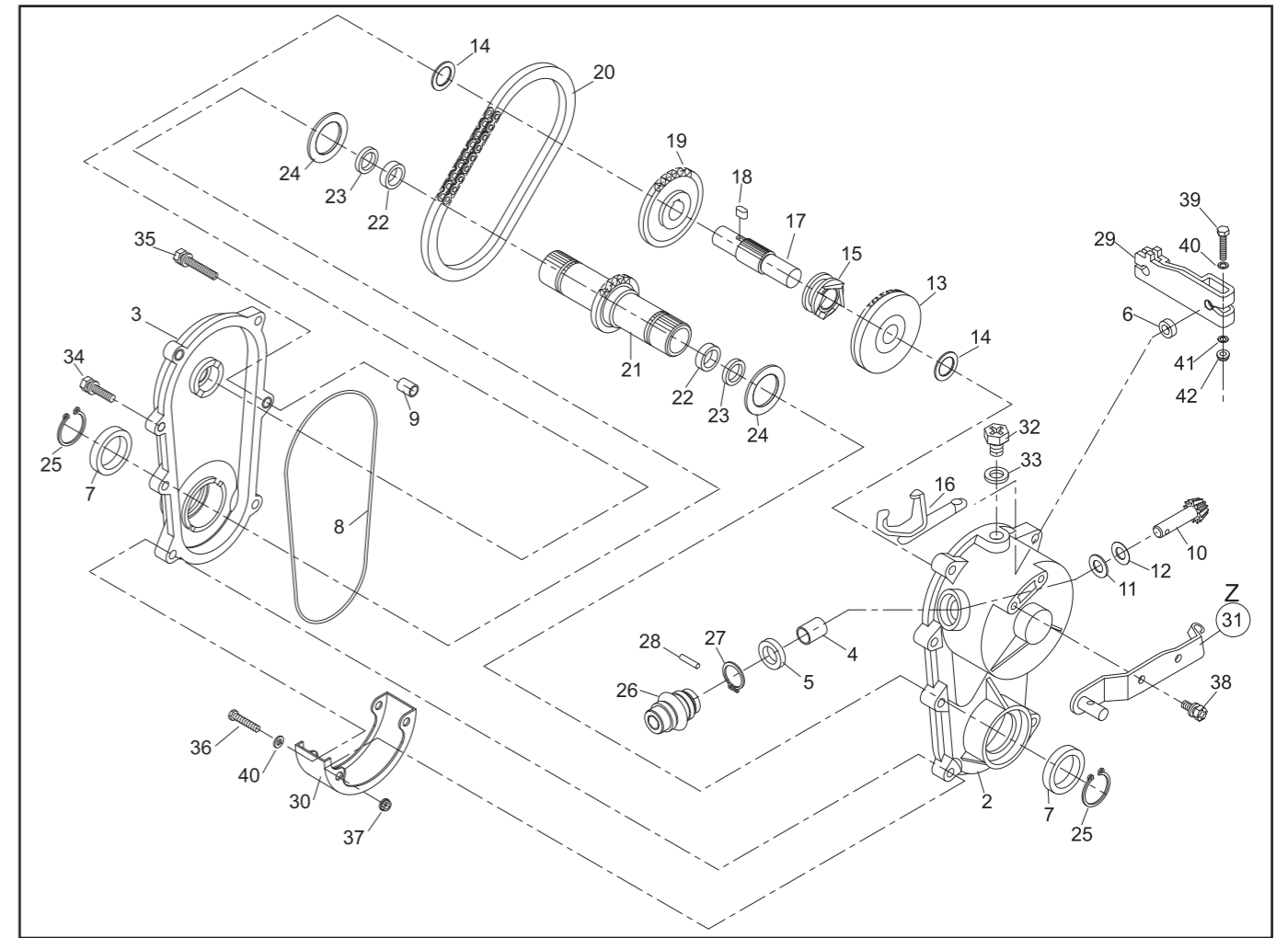
NOTE	REF. No.	PARTS No.	PARTS NAME	HANDLE-ROLLER		2/2	Dec. 26. 2006	REMARKS
				Q'TY INCLUDING	PRICE()			
	29							
	30							
	31							
	32							
	33							
	34							
	35							
	36							
	37							
	38	71900 797	COVER ASSY	1				
	39	470L 0514	(+)TAPPING SCREW	2				
	40	71052 119	BOLT SET	1				
	41	36061 118	KNOB	4				
	42	31057 134	BOLT	2				
A	43	68028 118	WIRE BAND	3				
	44							
	45							
	46							
	47							
	48							
	49	91003 165	CONTROL CABLE	1				
	50	91001 337	THROTTLE WIRE(FJ151V)	1				
	51	91003 177	CONTROL CABLE(BBC)	1				
	52	11062 174	FRAME C.P.	1				
	53	36098 133	GRASS BAG C.P.(KAAZ)	1				
C	54	41003 201	TUBE (15.6x800L)	1				
C	55	68028 119	WIRE BAND	2				
C	56	36080 156	RUBBER SHEET	1				



PARTS LIST
GEAR CASE ASSY (71008-369)

P/L No. 46014-265-02

REF. No.	PARTS No.	PARTS NAME	GEAR CASE		PRICE()	1/2		REMARKS
			Q'TY INCLUDING			RECOMM.(%) Lot.100	Dec. 25, 2006	
1	71008 369	GEAR CASE ASSY	1			-		
2	51001 279	GEAR CASE(L)	1			3		
3	51001 280	GEAR CASE(R)	1			3		
4	76007 167	BUSH	1			3		
5	61002 161	OIL SEAL	1			5		SD 10 20 5
6	61002 162	OIL SEAL	1			5		SD 8 14 4
7	61002 188	OIL SEAL	2			5		SD 28 38 6
8	214B 1350	O-RING	1			5		
9	11083 201	COLLAR	2			3		
10	78003 130	PINION	1			5		
11	61003 109	THRUST PLATE	1			3		
12	68007 132	SIM	0-2			5		
13	78001 162	BEVEL GEAR	1			3		
14	61024 118	SPACER	2			3		φ 16.2 × φ 24 × t1
15	11129 107	CLUTCH	1			3		
16	11097 106	SHIFTER FORK	1			5		
17	64014 242	SHAFT	1			3		
18	91020 147	KEY	1			3		
19	36112 115	SPROCKET	1			3		
20	91074 107	CHAIN	1			3		
21	64014 243	SHAFT	1			3		
22	927B 1512	NEEDLE BEARING	2			3		FJ1512
23	61002 189	OIL SEAL	2			5		SO 15 21 3
24	61024 171	SPACER	2			3		φ 28.2 × φ 36 × t1
25	812V 2800	C-SNAP RING	2			3		φ 28



PARTS LIST
GEAR CASE ASSY (71008-369)

P/L No. 46014-265-02

REF. No.	PARTS No.	PARTS NAME	GEAR CASE		PRICE()	2/2		REMARKS
			Q'TY INCLUDING			RECOMM.(%) Lot.100	Dec. 25, 2006	
26	91097 101	UNIVERSAL JOINT	1			3		
27	812V 2000	C-SNAP RING	1			3		φ 20
28	717B 0418	PARALLEL PIN	1			3		φ 4 × 18
29	11104 169	ARM	1			3		
30	36065 311	COVER	1			3		
Z 31	11006 148	STAY C.P.	1			5		
32	31057 262	HEXAGON BOLT	1			3		
33	68001 110	FIBER WASHER	1			3		
34	315L 0625	(+)HEXAGON BOLT(SW,PW)	3			3		M6 × 25
35	315L 0630	(+)HEXAGON BOLT(SW,PW)	2			3		M6 × 30
36	322L 0635	(+)HEXAGON BOLT	2			3		M6 × 35
37	580L 0600	FLANGE LOCK NUT	2			3		M6
38	315L 0616	(+)HEXAGON BOLT(SW,PW)	2			3		M6 × 16
39	311M 0630	HEXAGON BOLT	1			3		M6 × 30 8T
40	611L 0600	PLAIN WASHER	3			3		M6
41	613L 0600	PLAIN WASHER	1			3		M6
42	571L 0600	FLANGE NUT	1			3		M6

