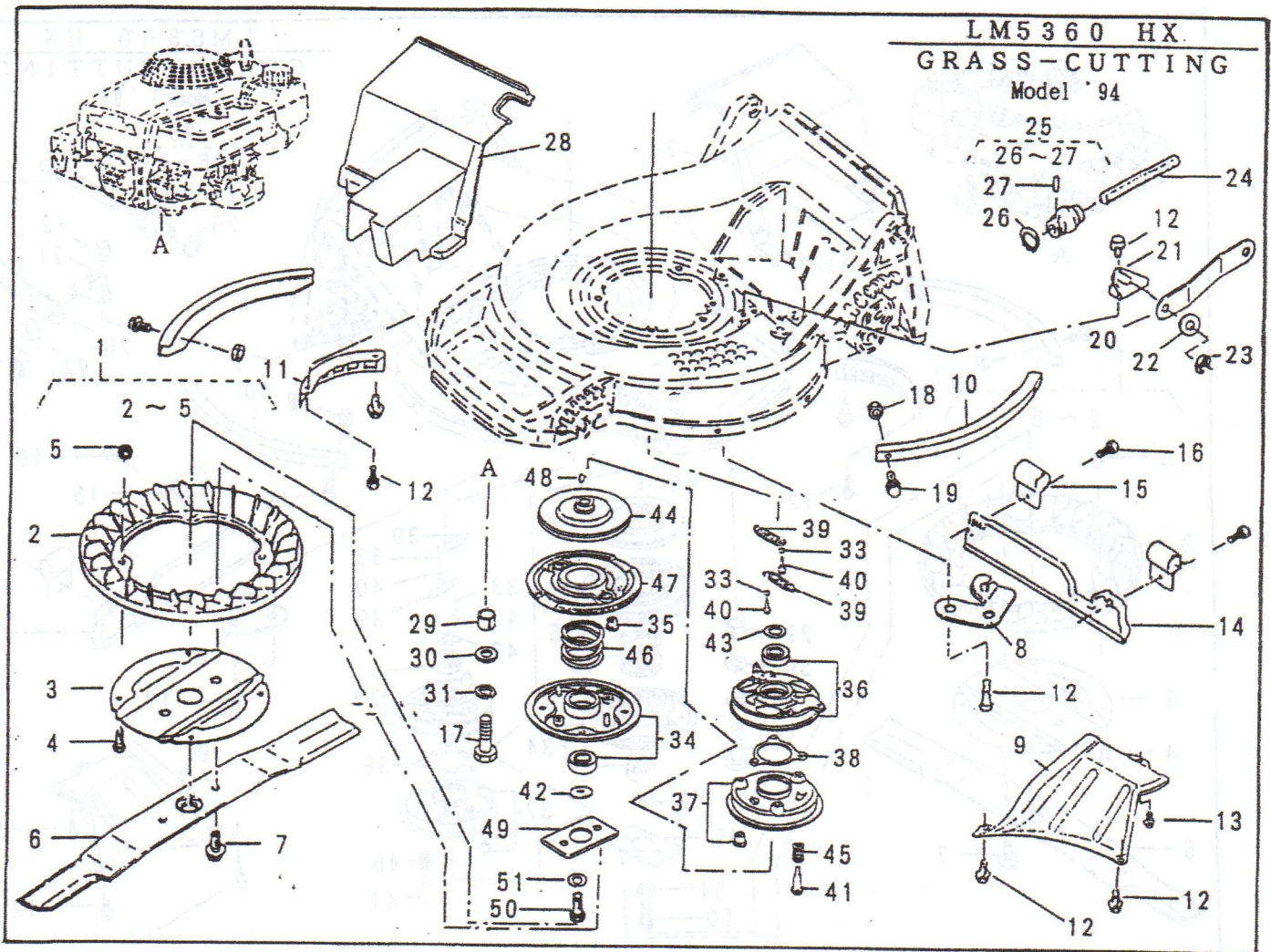


LM5360 HX.
GRASS-CUTTING
Model '94



PARTS LIST
MODEL : LM5360 HX, (GRASS-CUTTING)

46013-180

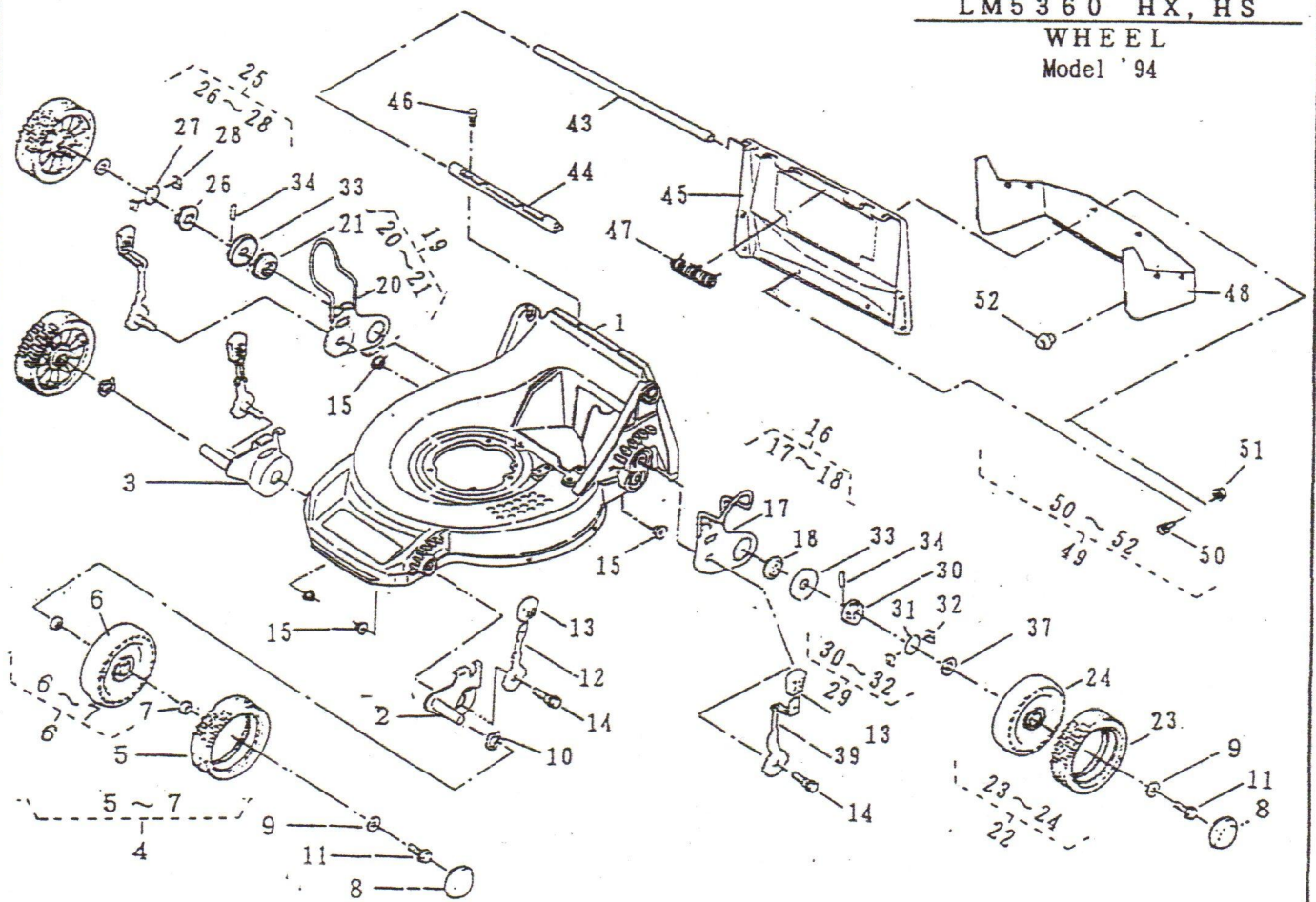
Dec. 4 th. 1993 1 / 2

REF. NO.	PARTS NO.	PARTS NAME	Q' TY	PRICE (Y)	RECOMM. (%)	REMARKS
1	71082 110	FAN ASS'Y	1		-	
2	51125 103	FAN	1		5	
3	11102 151	HOLDER	1		5	
4	335L 0620	FLANGE BOLT	4		5	
5	580L 0600	FLANGE NUT	4		3	
6	91014 159	BLADE	1		15	
7	31057 197	HEXAGON BOLT	2		15	
8	51002 113	WIRE HOLDER	1		3	
9	36065 300	COVER	1		10	
10	51090 117	PROTECTOR	2		5	
11	36065 180	COVER	1		3	
12	342J 0612	FLANGE BOLT TAPPING	8		3	
13	342J 0610	FLANGE BOLT TAPPING	1		3	
14	36046 118	SAFETY GUARD	1		3	
15	11012 126	HANGER BAND	2		3	
16	335L 0616	FLANGE BOLT	2		3	
17	31057 189	HEXAGON BOLT	4		3	
18	512L 0600	HEXAGON NUT	4		3	
19	335L 0610	FLANGE BOLT	4		3	
20	91049 116	CONNECTOR	1		3	
21	11006 113	STAY C. P.	1		3	
22	611L 1000	WASHER	1		3	
23	816V 0800	E-SNAP RING	1		4	
24	64014 222	SHAFT	1		3	
25	91097 101	UNIVERSAL JOINT	1		3	
26	812V 2000	C-SNAP RING FOR SHAFT	1			

LM5360 HX, HS

WHEEL

Model '94

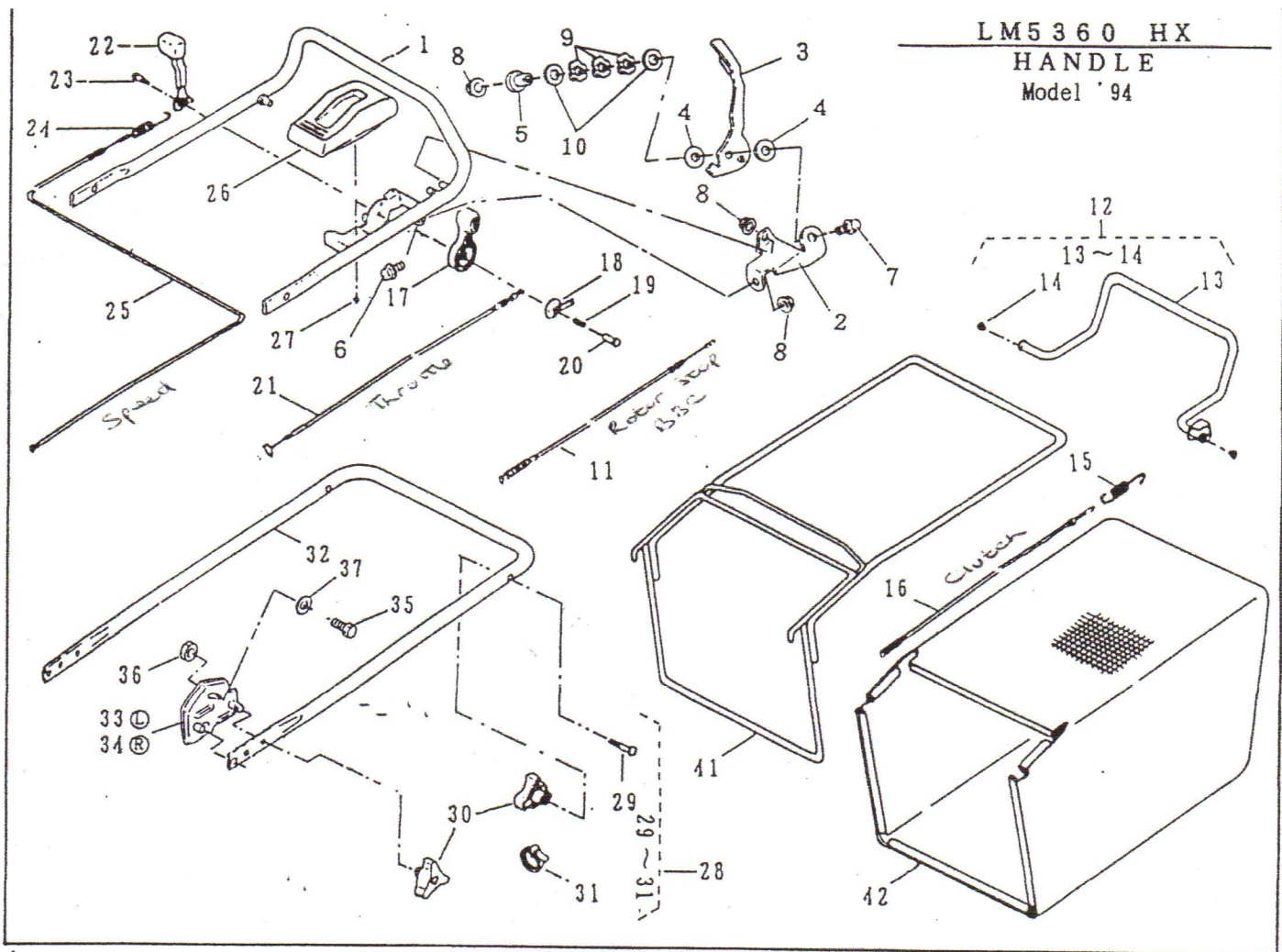


PARTS LIST
MODEL : LM5360 HX, HS(WHEEL)

46013-179

REF. NO.	PARTS NO.	PARTS NAME	Q'TY INCLUDING	Oct. 17, 1997		REMARKS
				PRICE(¥)	RECOMM. (%)	
1	51043 136	HOUSING	1			3
2	11142 112	ADJUSTER	1			3 (L)
3	11142 113	ADJUSTER	1			3 (R)
4	71041 103	WHEEL ASS'Y	2			-
5	91086 102	TIRE	1			15
6	36107 102	WHEEL	1			3
7	932L 0696	BEARING	2			5
8	36070 110	CAP	4			3
9	68036 101	WASHER	4			3
10	664V 0626	WAVE SPRING WASHER	2	M6x26		3
11	31057 181	HEXAGON BOLT	4			3
12	11150 101	ADJUST LEVER	2			3
13	36061 121	KNOB	4			3
14	31057 132	HEXAGON BOLT	4			3
15	569L 0800	FLANGE NYLON NUT	4	M8		3
16	71122 101	ADJUSTER ASS'Y	1			- (L)
17	11142 104	ADJUSTER	1			3
18	945L 0349	BEARING	1			5
19	71122 102	ADJUSTER ASS'Y	1			- (R)
20	11142 105	ADJUSTER	1			3
21	945L 0349	BEARING	1			5
22	71041 112	WHEEL ASS'Y	2			-
23	91086 106	TIRE	1			15
24	36107 101	WHEEL	1			3
25	71158 101	RATCHET ASS'Y	1			- (R)
26	11102 138	HOLDER	1			3

LM5360 HX
HANDLE
Model '94

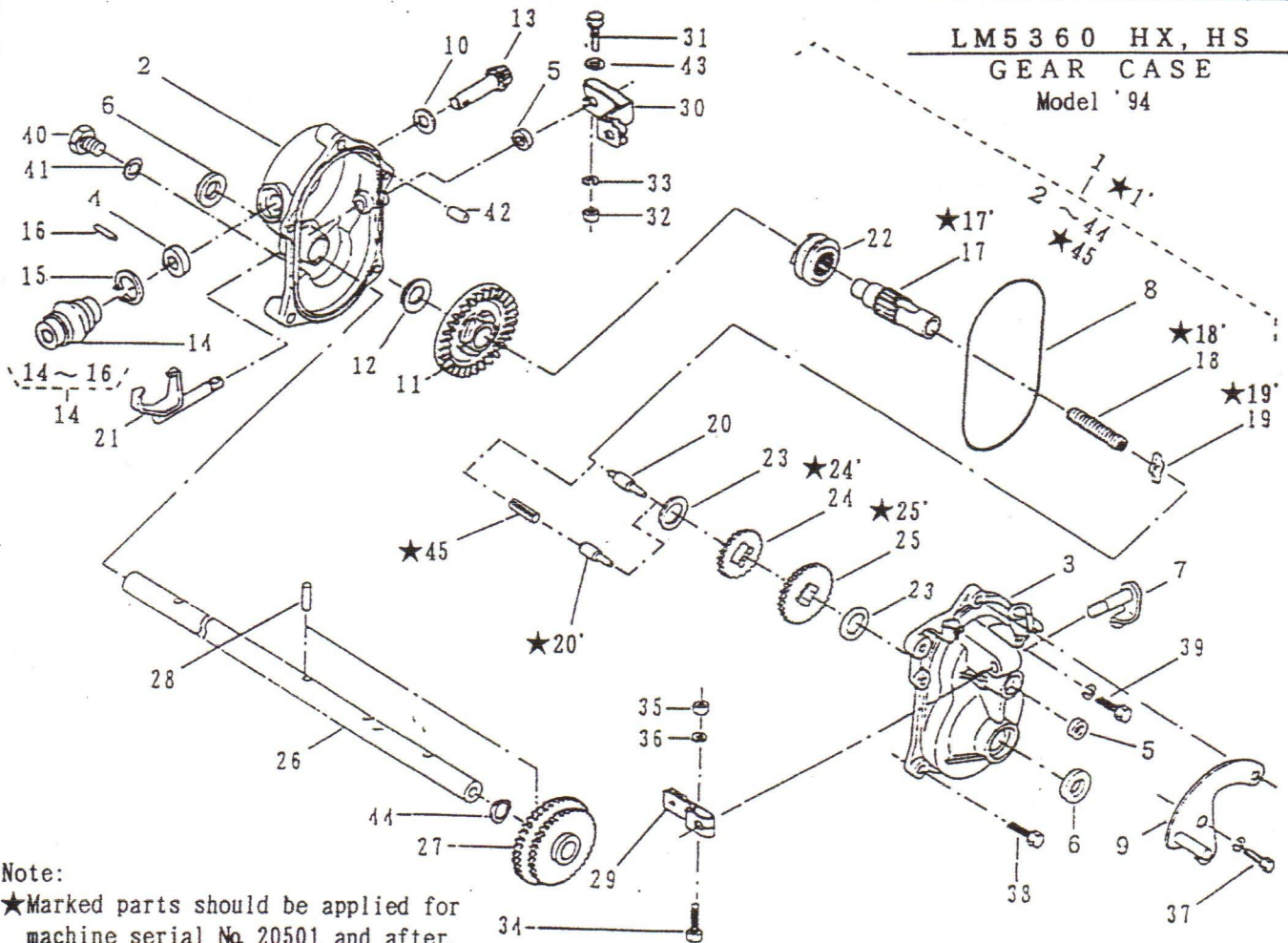


PARTS LIST
MODEL : LM5360 HX. (HANDLE)

46013-182

REF. NO.	PARTS NO.	PARTS NAME	Q' TY	Dec. 1 st. 1993		REMARKS
				PRICE (Y)	RECOMM. (%)	
1	51027 222	HANDLE	1			3
2	11113 293	STAY	1			5
3	11095 138	LEVER	1			10
4	68036 200	WASHER	2			3
5	61024 168	SPACER	1			3
6	335L 0820	FLANGE BOLT M8x20	1			3
7	335L 0830	FLANGE BOLT M8x30	1			3
8	569L 0800	FLANGE NYLON NUT M8	3			3
9	664J 1600	WAVE SPRING WASHER M16	3			3
10	68036 206	WASHER	2			3
11	91003 144	CONTROL CABLE	1			15
12	71161 105	LEVER ASS'Y	1			-
13	11095 139	LEVER	1			3
14	76007 131	BUSH	2			15
15	68013 183	SPRING	1			5
16	91003 140	CONTROL CABLE	1			5
17	91010 169	THROTTLE LEVER	1			10
18	61003 113	THRUST PLATE	1			5
19	68013 160	SPRING	1			3
20	31058 107	HEXAGON NUT	1			3
21	91001 233	THROTTLE WIRE	1			10
22	11095 117	LEVER	1			3
23	31062 109	PRE-COAT LOCK BOLT	1			5
24	68013 161	SPRING	1			3
25	91003 125	CONTROL CABLE	1			5

LM5360 HX, HS
GEAR CASE
Model '94

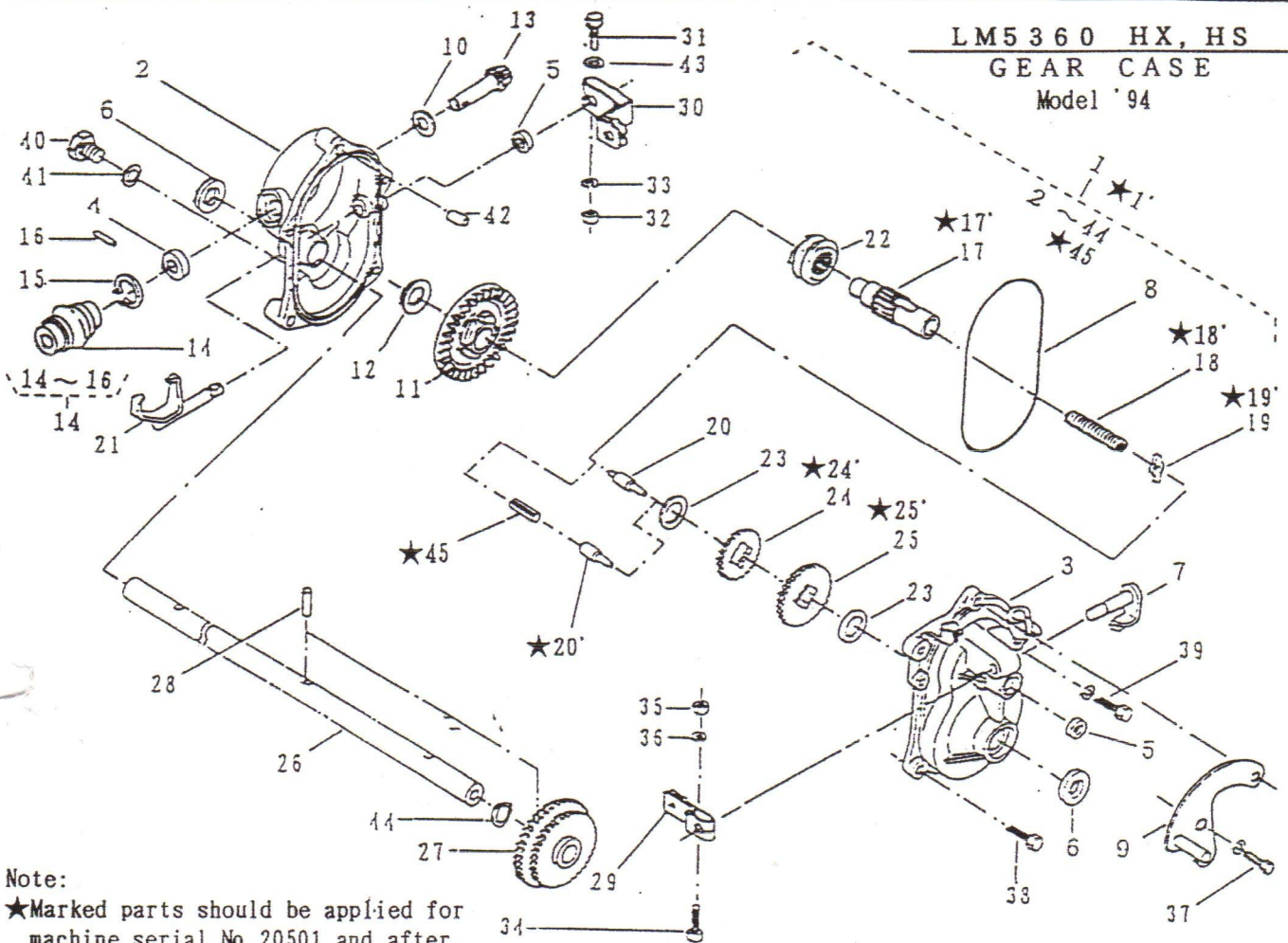


PARTS LIST
MODEL : LM5360 HX, HS(GEAR CASE)

46013-178

REF. NO.	PARTS NO.	PARTS NAME	Q'TY INCLUDING	Nov, 25 th, 1993	RECOMM. (%)	REMARKS
				PRICE(¥)		
1	71008 263	GEAR CASE ASS'Y	1		-	~ No.20500
★ 1'	71008 275	GEAR CASE ASS'Y	1		-	No.20501 ~
2	51001 195	GEAR CASE	1		3	
3	51001 196	GEAR CASE	1		3	
4	61002 161	OIL SEAL SD 10 20 5	1		5	
5	61002 162	OIL SEAL SD 8 14 4	2		5	
6	61002 163	OIL SEAL SD 15 24 5	2		5	
7	64024 104	SHIFTER SHAFT	1		3	
8	214B 11000	O-RING S110	1		5	
9	11006 101	STAY C. P.	1		3	
10	61003 109	THRUST PLATE	1		5	
11	78001 136	BEVEL GEAR	1		3	
12	61024 117	SPACER	1		5	
13	78003 111	PINION	1		3	
14	91097 101	UNIVERSAL JOINT	1		3	
15	812V 2000	C-SNAP RING FOR SHAFT φ20	1		1	
16	717B 0418	PARALLEL PIN φ4x18	1		3	
★ 17	64014 221	SHAFT	1		3	~ No.20500
★ 17'	64014 236	SHAFT	1		3	No.20501 ~
★ 18	68013 167	SPRING	1		3	~ No.20500
★ 18'	68013 262	SPRING	1		3	No.20501 ~
★ 19	31034 122	PIN	1		3	~ No.20500
★ 19'	31034 171	PIN	1		3	No.20501 ~
★ 20	64014 157	SHAFT	1		3	~ No.20500
★ 20'	64014 235	SHAFT	1		3	No.20501 ~
21	11097 106	SHIFTER FORK	1		3	

LM5360 HX, HS
GEAR CASE
Model '94



Note:

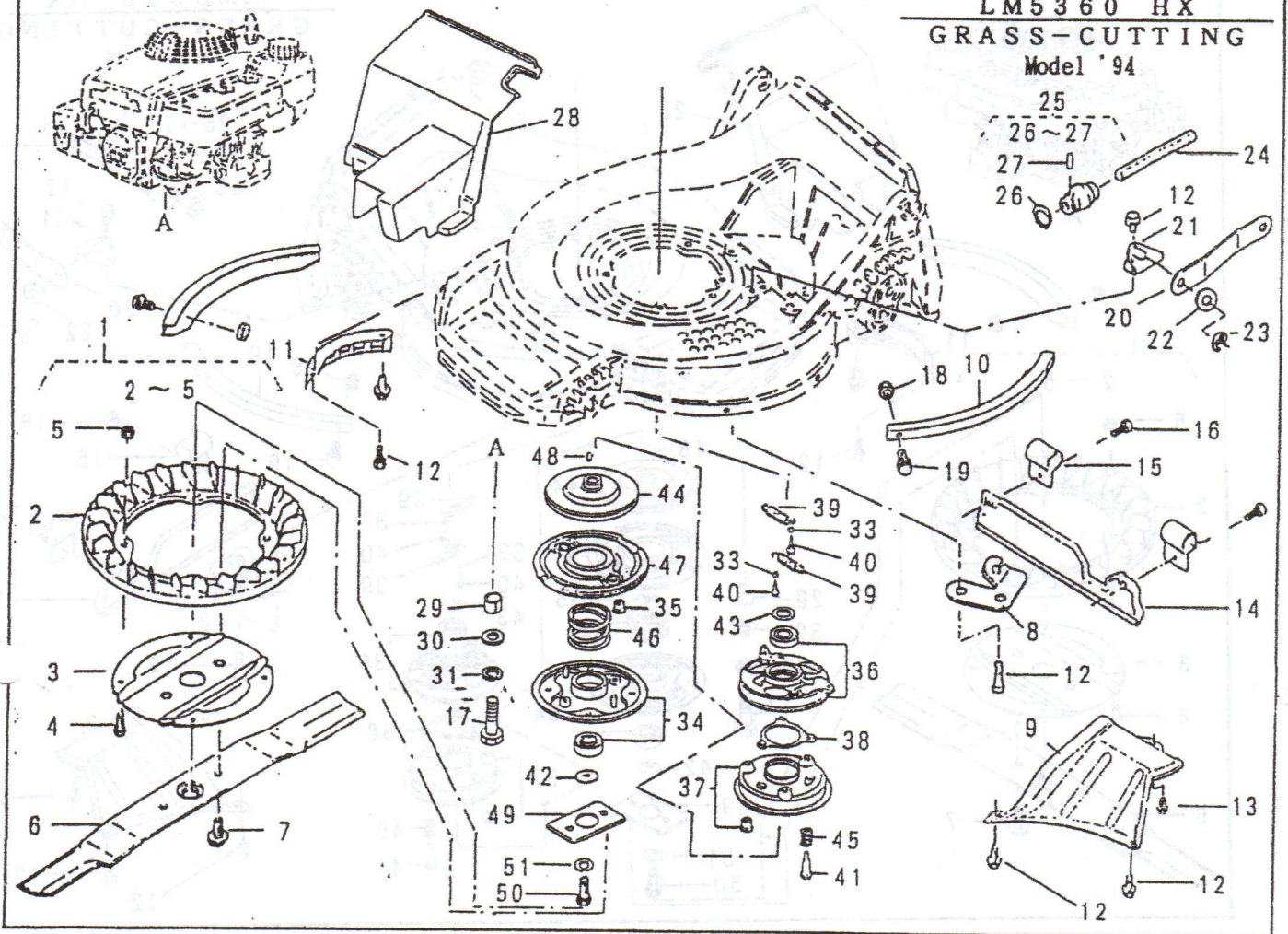
★Marked parts should be applied for machine serial No. 20501 and after.

PARTS LIST
MODEL : LM5360 HX, HS(GEAR CASE)

46013-178

REF. NO.	PARTS NO.	PARTS NAME	Q'TY INCLUDING	Nov. 25 th, 1993	RECOMM. (%)	REMARKS
				PRICE(¥)		
22	11129 107	CLUTCH	1		3	
3	61024 118	SPACER	2		3	
24	78004 163	GEAR	1		3	~ No.20500
★ 24	78004 156	GEAR	1		3	No.20501 ~
25	78004 164	GEAR	1		3	~ No.20500
★ 25	78004 155	GEAR	1		3	No.20501 ~
26	64014 163	SHAFT	1		3	
27	78012 107	GEAR C. P.	1		3	
28	31034 150	PIN	1		3	
29	11104 119	ARM	1		3	
30	11104 137	ARM	1		3	
31	311M 0630	(+)HEXAGON BOLT	M6x30	1	3	
32	571L 0600	FLANGE NUT	M6	1	3	
33	613L 0600	PLAIN WASHER	M6	1	3	
34	320L 0525	(+)HEXAGON BOLT(W/PW)	M5x25	1	3	
35	571L 0500	FLANGE NUT	M5	1	3	
36	611L 0500	PLAIN WASHER	M5	1	3	
37	318L 0612	(+)HEXAGON BOLT(W/SW)	M6x12	1	3	
38	315L 0635	(+)HEXAGON BOLT(W/SW, PW)	M6x35	2	3	
39	315L 0625	(+)HEXAGON BOLT(W/SW, PW)	M6x25	3	3	
40	31057 126	HEXAGON BOLT		1	3	
41	68001 110	FIBER WASHER		1	3	
42	11083 201	COLLAR		2	5	
43	611L 0600	PLAIN WASHER	M6	1	3	
14	812V 2200	C-SNAP RING FOR SHAFT	φ22	1	1	
★ 45	736U 0320	SPRING PIN		1	3	No.20501 ~

LM5360 HX
GRASS-CUTTING
Model '94



PARTS LIST
MODEL : LM5360 HX. (GRASS-CUTTING)

46013-180

REF. NO.	PARTS NO.	PARTS NAME	Q'TY	Dec. 4 th, 1993		RECOMM. (%)	REMARKS
				PRICE(¥)	2 / 2		
27	717B 0418	PARALLEL PIN $\phi 4 \times 18$	1			5	
28	36065 299	COVER	1			3	
29	61024 142	SPACER	3			3	
30	613L 0800	PLAIN WASHER M8	4			3	
31	661L 0800	SPRING LOCK WASHER M8	4			3	
33	L19512 883 000	FAN COLLAR	2			-	
34	L72600 VA4 010	BLADE HOLDER ASS'Y	1			3	
35	L72613 VA4 000	BLADE HOLDER BUSH	2			5	
36	L75090 VA4 020	BALL CONTROL PLATE	1			10	
37	L75100 VA4 010	BRAKE C. P.	1			3	
38	L75110 VA4 000	BALL RETAINER	1			10	
39	L75113 VB3 300	CLUTCH RETURN SPRING	2			5	
40	L90014 952 000	FLANGE BOLT	4			3	
41	L90021 VA4 000	SPECIAL BOLT	3			3	
42	L90401 880 000	WASHER	1			3	
43	L90501 952 010	THRUST WASHER	1			3	
44	L75130 VA4 000	DRIVE DISK	1			3	
45	L75132 VA4 000	BRAKE HOLDER SPRING	3			5	
46	L75135 VB3 300	CLUTCH SPRING	1			3	
47	L75150 VB3 300	DRIVEN DISK C. P.	1			3	
48	L94401 16150	WOODRUFF KEY	1			15	
49	61024 169	SPACER	1			3	
50	31057 196	HEXAGON BOLT	1			3	
51	671V 1000	CONICAL SPRING WASHER M10	1			3	