

TROUBLE SHOOTING

Should the Sprayer not function correctly, you may need to check for the following:

Check that there is liquid in the tank and pump the lever several times until it offers a certain amount of resistance.

Make sure that each part is tightly sealed.

Make sure that the pump is screwed down tightly onto the tank.

Make sure that the seal ring, located on the pump screw thread is in good condition.

If there is no flow even though the sprayer has been pressurised check that the filter and spray lance are clean and not blocked.



Manufactured for:
RUTLAND PRODUCTS
Wigston, Leicester, England, LE18 2FS.
www.rutlandtools.co.uk

AVAILABLE FROM YOUR DISTRIBUTOR



RUTLAND™

Quality Gardening Tools

16 LITRE GARDEN KNAPSACK SPRAYER

MODEL GKS016
ORDER CODE RTL-523-4300K

- 16 Ltr capacity blow-moulded container with filter and fluid level graduations
- Can be used for left or right handed operation
- Spray lance with locking trigger and four adjustable nozzles, that clips onto handle for storage
- Pressurising pump handle with grip and storage loop
- Adjustable webbing shoulder straps



OPERATOR'S MANUAL

Please retain this information for future reference.

SAFETY GUIDELINES

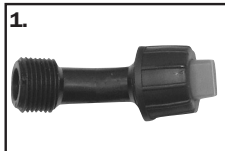
Always read the instructions carefully before use.

- Always use with care. **Caution:** Your pressure sprayer is not suited to use with inflammable goods, this could caused fire and injury.
- Always keep out of reach of children.
- Always release the pressure if the sprayer is not in use.
- Always rinse the inside of the container with clean water after use to prevent corrosion and also avoid any cross contamination of different products which may cause a chemical reaction.
- Always clean the head of the hose after use to prevent any blocking.
- Always wear eye protection, a face mask and gloves when using the sprayer
- Always dispose of residual pesticides in accordance with local regulations.
- Always store the sprayer in a cool dark place after use.
- Never spray pesticide facing the wind.
- Never spray pesticide near other people, animals and food.
- Never operate under high pressure.
- Never use highly toxic/residual pesticides for the treatment of insects on vegetables, fruits, tea and medicinal herbs.
- Never use hot liquids, do not allow the temperature of the liquid you are using to exceed 35°C. **Caution:** Stop using the sprayer immediately if any kind of damage or corrosion is found on the container or the hose.
- Never fill the tank above the indicated maximum level.
- Never leave unattended.
- Never drop.

SPECIFICATIONS

Order code:RTL-523-4300K **Spray lance:**.....620mm
Model number:GKS016 **Dimensions WxHxD:**.....425 x 590 x 185mm
Capacity:16 Litres **Gross weight:**.....3kg (empty)
Hose:.....1460mm **Gross weight:**19kg (full)

NOZZLES



1) Fan style nozzle: Sprays evenly and is suitable for spraying low/short stalked crops. Ideal for spraying weed-killer.



2) Double conical nozzle: Covering twice the area this head is suitable for spraying pesticide and insecticide to prevent diseases and kill insects.



3) Conical nozzle: Suitable for spraying pesticide and insecticide to prevent diseases and kill insects.



4) 4 Hole adjustable nozzle: Suitable for spraying high stalk crops such as fruit trees.

The Rutland knapsack sprayer is economic, safe and efficient. It is especially suitable for the prevention and cure of diseases, infestation of crops, plants and gardens and for environmental sanitation.

INSTRUCTIONS

- Firstly connect one end of the hose to the spray lance (Fig.1).
- Connect the other end of the hose to the spraying tank (Fig.1).
- Assemble and attach the shoulder strap to the spraying tank (Fig.2).
- Unscrew and pour the spray preparation into the tank through the filter (Fig.3 and Fig. 4).

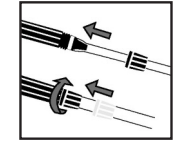


Fig. 1

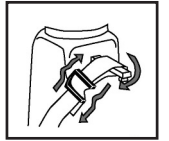


Fig. 2

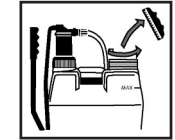


Fig. 3

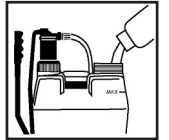


Fig. 4

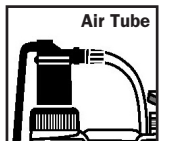


Fig. 6

- Pump the lever up and down without forcing. To maintain pressure during use continue to pump the lever in an up and down motion (Fig. 5).
- Grease the air tube regularly to help it move freely.
- Spray, pressing on the handle (Fig.6).
- The spray may be adjusted by tightening or unscrewing the nozzle.
- During use maintain pressure by pumping the pump lever.
- After each use carefully rinse out the tank and then spray a large amount of fresh water through the nozzle to ensure any residual pesticide is rinsed out.



Fig. 5

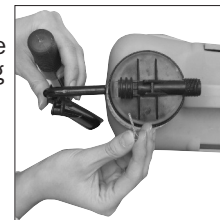


Air Tube

DUAL OPERATION

The Rutland garden sprayer can be for left or right handed operation:

- Take out the split pin situated on top of the air chamber to enable removal of the connecting rod that is attached to the pumping arm.
- Turn the whole sprayer upside down and rotate the pumping arm so that it points upwards. The fixed plastic retaining clip on the horizontal bar can now be removed.
- Pull out the pumping arm.



- Position the pumping arm into the other hole provided on the other side of the container.
- The fixed plastic retaining clip can now be placed onto the horizontal bar making sure the pin for the fixed plastic retaining clip locates into the hole.
- Pull up the air chamber and slot the connecting rod back through the hole provided.
- Place the connecting rod back through the hole at the top of the air chamber
- Place the split pin back into the hole.
- Swap the straps over to the other side of the container.

